

# W e l c o m e

**PLAY  
STAY  
SHOP  
DINE  
EXPLORE  
UNWIND**



**At the Center  
of the Universe**

**FREE, TAKE ONE**  
**Visitor  
Guide**

**2022-23**

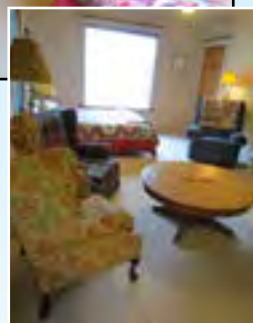
# HERCULES INN

*Overnight or Extended Stay*



*"Hands-down, this is the best lodging in Wallace..."*

*Tripadvisor.com*



## Luxurious Suites Unbeatable Rates

- FLAT SCREEN TVs
- KING & QUEEN BEDS
- LAZY BOYS
- FULLY SIZED AND STOCKED KITCHENS
- COIN OP LAUNDRY
- JACUZZI HOT TUB
- COVERED, LIGHTED PARKING

*Each of our four suites sleeps up to four guests*

**Within walking distance to town,  
the Hercules Inn is located on  
Front and 2nd St., and just two  
blocks from exit 61 off I-90.**

For reservations and registration contact:  
**www.redlightgarage.com**

**509-435-3005  
509-991-2005**

**THE BEST DEAL  
INTOWN!**



*Downtown Wallace at the Center of the Universe. CENTER BELOW: Wallace one of America's most historic cities. Wallace Huckle Berry Festival IMAGE CREDITS: NBC TODAY SHOW, MIKE FEILER. COVER PHOTO: PINE STREET & TROLLEY IN THE FALL, LIZZIE KEITEL*

**W**allace offers a storybook like travel experience. It's entirely listed on the National Register of Historic Places, nestled among tumbling mountain streams, deep wooded canyons and abundant wildlife...

## A storied place, Wallace

...its place in the heart of one of the world's richest silver districts, 1.3 billion ounces mined and counting, is a big reason it's a national landmark.

Visitors today will find four museums, underground mine tours, live theater, a host of dining, lodging and imbibing options, two microbreweries and unique shops --- and that's just the indoors.

Outdoors are a whole other story. Wallace is home base to Idaho's only Hall of Fame Rails to Trails cycling routes, a new mountain bike park, two ski resorts within 15 minutes, a 1,000 plus miles of ATV and groomed snowmachine trails, ziplines, great fishing, camping, big game hunting



and world class hiking trails.

Plus there are special events and festivals all year long. And the Probable Center of the Universe.

Add in a reputation for hospitality and that it's a host city for many conventions and

gatherings, and it's no wonder Wallace has been named a top destination by

*The NBC Today Show, The Travel Channel, Reader's Digest, True West, USA Today, MSN, Northwest Travel, Huffington Post, Budget Travel and others.*

Come see for yourself. Turn the page, visit us at [Wallaceld.fun](http://Wallaceld.fun), and on Facebook and Instagram.

Best yet, visit in person. Find Wallace just off I-90 at exits #61 & #62.





The Crown Jewel of America's Rail Trails, the Hiawatha features Ten tunnels and seven trestles - some over 230 feet above the ground. IMAGE CREDITS VISIT IDAHO

## 'Bucket list' beautiful

**"Breath-taking". "Bucket-list worthy". "Crown-Jewel of Rail-Trails."**

Are just a few of the reviews given to the Route of the Hiawatha Rail Trail. Wending its way through 15 miles of dense forest, tumbling waterfalls, towering train trestles and cool mountain train tunnels, the Route of the Hiawatha is one of the most popular cycling attractions in Northwest.

The route rolls over the abandoned Milwaukee Railroad grade between the old town site of Taft and the North Fork of the St. Joe River near Avery.

Designed for all ages and experience levels, it boasts a rider-friendly, all-downhill 1.6 percent average grade -- gently dropping 1,000 feet from start to finish.

For the best experience don't rush this ride. Take the time to savor the scenery, read the

nearly 50 interpretive signs and kiosks, and keep on the lookout for moose, elk, deer and other wildlife.

Shuttle buses are available to transport bikes and bikers back to the top.

Over 70,000 riders took the trail in 2020, prompting trail concessionaire Lookout Pass to institute a reservation system for the popular weekend tours.

Start your Hiawatha adventure at Lookout Pass Ski Area. It's located at exit #0 on I-90 at the Idaho/Montana line, 12 miles east of Wallace. Once there you

can get trail passes, shuttle tickets, mountain bike rentals, souvenirs, and sack lunches.

The Route of the Hiawatha is open daily from late May to late September, from 8:30 a.m. to 5:30 p.m. Pacific Time.

For more info and/or reservations visit [ridethehiawatha.com](http://ridethehiawatha.com), or call (208) 744-1234

### INSIDE

|                                    |       |
|------------------------------------|-------|
| World Class Trails .....           | 4-8   |
| Museums & Underground Tours .....  | 10-13 |
| Zip, bike & hike .....             | 14-16 |
| Lodging & Dining Guides .....      | 17-23 |
| Where am I? Area map .....         | 24-25 |
| Ski, Fish, Hunt, Kayak .....       | 26-27 |
| On stage, screen, print & TV ..... | 28-31 |
| Center of the Universe .....       | 33    |
| Events Calendar .....              | 36-37 |
| Shopping Guide .....               | 38-39 |
| Blooms & Pools .....               | 40-41 |
| Bring your group here .....        | 42    |
| Old Mission & Ghosts .....         | 43    |
| Colorful Past & Present .....      | 44-45 |
| Walking Tour .....                 | 46-54 |
| A last look .....                  | 56    |

**Fido Friendly & located steps from dining, bars & shops.**

**Renovated 2022**  
Check out our website for our most updated rooms!

**Book Direct & SAVE 15% off lodging!**

Use online code: **VISITOR15**  
\*based on availability

**Stardust Motel**  
410 Pine St. Wallace, Idaho

208-752-1213  
[StardustWallace.com](http://StardustWallace.com)

f i @stardustwallace

# Hall of fame ride

## On the 73 Mile Trail of the Coeur d'Alenes

There are nearly 2,000 rail trails in America.

Just 15 -- less than 1% -- are Hall of Fame Trails as distinguished by the Rails to Trails Conservancy.

Two of those select trails are in Idaho. Both are on Wallace's doorstep: The Route of the Hiawatha on the previous page, and the Trail of the Coeur d'Alenes, featured here.

The Trail CdA's spans 70 plus miles of well-maintained asphalt beside rivers, lakes and small towns of the Idaho Panhandle.

Start the trail on either end in Mullan or Plummer, or pick it up anywhere in between.

In Wallace the trail runs the length of the town all along the South Fork of the Coeur d'Alene River.

It has a gentle grade and smooth surface---- along with 20 developed trailheads and 17 scenic waysides with picnic tables and benches.

Plus there's three dozen bridges and trestles that a body can stop and watch rushing streams or view tranquil lakes and wetlands,

Wildlife is abundant. Moose, deer, elk, black bear, bald eagles, osprey, herons, otters, beavers and waterfowl make

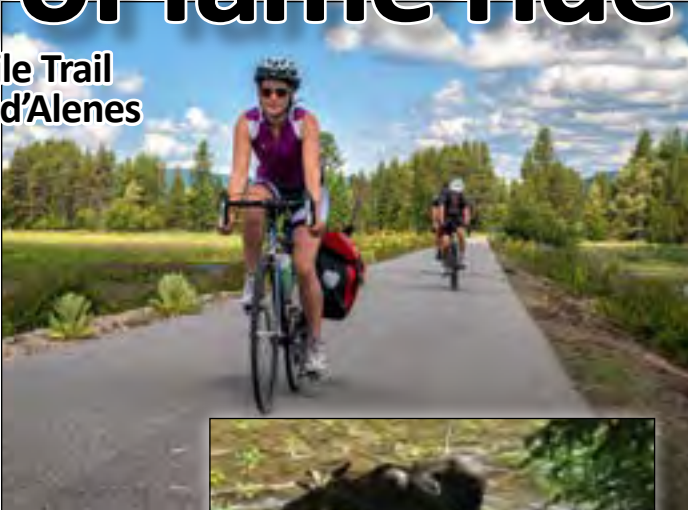


IMAGE CREDITS: VISIT IDAHO



the adjacent river, lake, forest and marshland their home.

The trail also accesses several points of interest including the Wallace's Northern Pacific Railroad Depot and the Cataldo Mission.

Now it's easier than ever to enjoy the trail -- with shuttle service available via the Wallace Inn and electric bike rentals through Wallace's Spokehouse.

For more info including detailed maps: CdA Tribe Trail Manager (208) 686-7045, State Trail Manager (208) 682-3814 or visit online at [parksand recreation.idaho.gov](http://parksand recreation.idaho.gov) and [friendsofcdatrails.org](http://friendsofcdatrails.org). Maps also at Wallace Visitor Center, Depot and Mining museums, Wallace Inn, Cataldo Mission (the trail HQ) and in Kellogg and Harrison.



### LOCAL GIFTS

Shirts · Hats · Stickers  
Souvenirs · Soap & More



### BOTTLE SHOP

75+ Choices of Beer, Cider,  
Seltzers & Cocktails



### TAPHOUSE

10 Taps loaded with  
Craft Beer & Cider

**605 BANK ST.**  
WALLACE, IDAHO

# Wallace Museum Pass



Three great historical attractions for one low price. Enjoy these National Register of Historic Places treasures. Rare artifacts, unique images, amazing interactive exhibits, and award winning collections. All within walking distance of each other in downtown historic Wallace.



### Northern Pacific Railroad Depot Museum

219 Sixth St.  
208 752-0111  
[NPdepot.org](http://NPdepot.org)

### Wallace District Mining Museum

509 Bank St.  
208 556-1592  
[WallaceMiningMuseum.com](http://WallaceMiningMuseum.com)



### Barnard Stockbridge Photography Museum

312 Fourth Street  
208 556-5580  
[BarnardStockbridge.com](http://BarnardStockbridge.com)

# Follow Pulaski's Trail

Lush forest, gurgling Placer Creek and breathtaking waterfalls now cover what was once a hellish moonscape from the largest wild fire in U.S. History. This four mile round trip hike with interpretative signage commemorates the heroism of firefighters who risked their lives saving Wallace from incineration.

The trail honors Ranger Ed Pulaski, who saved his crew of 45 men by shepherding them to safety. More exhibits and memorials on the trail and fire can be found in Wallace at the Mine museum, Visitor Center and Nine Mile Cemetery.

Featured on the *Travel Channel*, in the *NY Times* bestseller *the Big Burn* and PBS' *American Experience*, the trailhead is located one mile south of Wallace on St. Rte 456.

Road signs in Wallace guide visitors to the trail. Please note: the way to the trail passes through residential areas, so please



Top: Ranger Ed Pulaski. Center: Trail interpretative sign. Bottom: Placer Creek along the trail.

obey speed limits and watch for pets and pedestrians. IMAGE CREDITS: MIKE FEILER, WALLACE BARNARD-STOCKBRIDGE MUSEUM, JOHN DARRINGTON

## Road to Riches, Burke Canyon

Burke, Gem, Frisco, Black Bear, Yellow Dog—all legendary names of towns filled with stories of Bonanza and Bust and all a short drive up Burke Canyon Road at Exit 62 off I-90 at Wallace (Idaho State Rte 4). See map pp 24-25. On your way up the canyon see the massive ruins of the Frisco Mill, blown apart by striking workers in the 1890s mining war, as well as those still inhabited mining towns alongside

river and within a couple of miles of each other. Spectacular scenery and views along with frequent sightings of deer and Elk abound the whole seven mile drive to the once bustling town of Burke. Set in canyon so narrow that the mines, mills, rail, road and even a hotel had to share the same thoroughfare. That hotel, the Tiger, made *Ripley's Believe It or Not* for having river and railroad passing through the building.

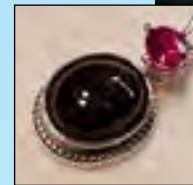


### E-Bike Rentals

Explore Historic Towns & Mountain Roads  
Trail of the Coeur d'Alenes & Hiawatha Trail  
Book at [DiscoverWallace.com/Play](http://DiscoverWallace.com/Play)  
519 Bank St. | Wallace, ID | 208-699-6882

# JOHNSON'S GEMS

**World Class Rocks & Gems from around the Globe**



**Collectibles - Books - Comics - Antiques - Toys - Vinyl Records - Jewelry Sports Memorabilia - Idaho Star Garnets**  
**SOMETHING FOR THE WHOLE FAMILY!**

**Check out our FLUORESCENT Minerals**



**On site jewelers**  
who can cut and polish the finest stones, and clean your jewelry while you shop

**AT THE CENTER OF THE UNIVERSE!**

24 Bank Street Wallace, Idaho 208 556-0983 [johnsonsgems.com](http://johnsonsgems.com)  
Exits 61 & 62 off I-90 [johnsonsgemsnstones@gmail.com](mailto:johnsonsgemsnstones@gmail.com)

# History lives in Wallace

For the history fan, Wallace boasts a treasure trove of attractions. The entire city is listed on the National Register of Historic Places, and nearly every home and building has a storied past. So much so Wallace



Wallace offers self guided walking tours of its 1890s era residential and commercial districts. Pedestrians can stroll at their leisure and learn the

**"Among the most historic towns in the West."**

*True West Magazine*

was honored by True West Magazine as one of the top ten historic towns in the West.



fascinating heritage of the town and its landmarks.

The first weekend of October the town celebrates that heritage with a history festival featuring guided tours of historic homes, re-enactments, free lectures and workshops.

Top: historic Tabor & Hutton homes on Pine Street. Paige Taylor Evans image. Below: Holy Trinity Church, now the Barnard Stockbridge Museum on 4th and Cedar. Wallace Chamber

## A quiet treasure: Wallace cemetery

**Nine Mile Cemetery** lies adjacent to the Sierra Silver Mine one mile north of town on Dobson Pass road (Rt 456). Among steep hills and forest is this solemn city of the dead, with internees from the town's beginnings in 1884 to the present.

Sections for different religions

and occupations as well as monuments to the firefighters who died in the great blaze of 1910.

To get there follow Sixth St. north past the Depot. Proceed under I-90.

Look for the green 1 mile marker on the right. The cemetery is on the left.

# Your must-see them: Wallace museums

## The Northern Pacific Railroad Depot Museum

is a great place to start your Wallace history tour. The beautifully restored 1901 built chateau style railroad depot and grounds tell the town's rich heritage through a series of interactive exhibits--all done with attention to style and accuracy.

Find unique treasures in their gift shop and attend the museum's multiple special events year-round. Open April 15-October 15. (208)752-0111 219 Sixth St. [npdepot.org](http://npdepot.org).



Over \$7 billion in mineral wealth have fueled an even richer history of fortunes made and lost, labor strife,

assassination of an Idaho Governor and visits from sitting U.S. Presidents. Exhibits on the Great Fire of 1910, a Smithsonian quality life sized mock mine, theater, Dante's Peak film exhibits, as well as an extensive digital research archive have led

the museum to be named one of Idaho's finest educational and research institutions.

New this year are exhibits on Buffalo Soldiers units' contributions in North Idaho as well as a new online store.

The museum's gift shop boasts souvenirs, a large collection of histories as well as silver coins and bullion.

(208) 556-1592 509 Bank St. [wallaceminingmuseum.com](http://wallaceminingmuseum.com)

## The Wallace District Mining Museum

is another must stop for any history buff. Featured twice on the Travel Channel's *Mysteries at the Museum*, the acclaimed museum tells the story of the richest Silver District on Earth. (And yes, we are still mining here).



**PROFESSIONAL  
REALTY SERVICES.  
IDAHO**

**208.786.4261**

**Francine Bartley**  
Sales Associate

Each office is independently owned and operated

**10 W. Portland Ave. Kellogg, ID 838737**  
[KelloggVacationHomes@gmail.com](mailto:KelloggVacationHomes@gmail.com)

# Go underground:

Now in its 40th year, the Sierra Silver Mine Tour is one of Idaho's most popular attractions. Take a one hour 15 minute tour via trolley or their new jitney around Wallace and up to the Sierra Silver mine located one mile north of town.



Go underground to this former working silver mine with retired miners as your guide. Inside the tour's expansive Cedar Street ticket office, waiting area and gift shop, discover artifacts and souvenirs galore. Old Fashioned Ice Cream Parlor and gold panning, too. Open May-Oct. **509 Cedar (208)752-5151 [silverminetour.org](http://silverminetour.org)**

VISIT IDAHO IMAGES

## Gold panning at Eagle City Park

Pan for it. Experience gold mining like the early prospectors did here: pan for gold in N. Idaho's gold fields.

Eagle City Park and Campground offers river front gold panning over 35 acres in the same rich placer fields discovered in the 1880s gold rush.

And, you keep all the gold you find! Nestled between the old mining camps of Murray and Prichard and short drive from Wallace or Kingston. Open seasonally. 208 699-8128.

*Online at [GoldFeverMiningSupply.com](http://GoldFeverMiningSupply.com)*





**“Your Silver Specialty Store”**

- Local Artist Designs
- Idaho Garnet & Star Garnets
- Idaho Opal & Star Opals
- Large Selection of Sterling Chain, Charms, Earrings
- Gift Ideas & More

606 Bank St.  
Wallace, Idaho 83873  
556-1171

*Like us on Facebook*

4289477-0428

# Haunting images

The people and places that populated Wallace's historic past aren't gone.

Like spirits inhabiting former homes, those old residents and buildings now reside in large format, high resolution prints and the extensive digital archives of Wallace's Barnard-Stockbridge Photo Museum.

Housed in the once shuttered National Register of Historic Places Holy Trinity Episcopal Church building, the museum showcases the Barnard Stockbridge Photo Collection -- an extraordinary cultural and historic resource.

## New Wallace sex workers' exhibit



Wallace Madame Babe Kelly and child, part of a new exhibit debuting at the museum this year, "the Ladies Upstairs, Downstairs." Photographer Nellie Stockbridge's images capture both the grittiness of sex workers' lives and their essential, often overlooked humanity.

Thousands of images paint the fascinating story of life in the Coeur d'Alene Mining District from the 1880s to 1963, the time the Barnard-Stockbridge studio operated in Wallace.

The building space itself is a sight to see, designed by renowned Northwest architect Kirtland Cutter.

Open April thru October, find the museum at 312 Fourth Street, across from the

Post Office, at [BarnardStockbridge.com](http://BarnardStockbridge.com) and on Facebook and Instagram.

## Your Full Service Supermarket:



*New Pharmacy Now Open 9am-6pm M-F*

**Fresh Produce, Fresh Meats with NW Premium Angus Beef, Fried Chicken, Full Service Deli, Donuts, Ice, Snacks, Red Box Movie Rentals**

**Locally Owned & Operated Open 7am-9pm, Daily**



**Harvest Foods** • Wallace's Only Liquor Store  
• Wide selection of beer & micro brews  
• Full selection of HUCKLEBERRY products

**800 Bank Street, Wallace 208-752-1233**

# Fly high at Silver Streak

"Rush" is an understatement for the six story drop on the Dragon's Breath Zipline, one of ten lines featured by Wallace Silver Streak Ziplines.

The lines range from one to six football fields long, allowing speeds up to 60 mph. (Or slower for the less wild at heart).

The zipline offers 10 different courses. Each has "dual zips," allowing the option of flying in the prone or "superhero" position. It's fun for the entire family.

Just getting up the mountain is an experience in itself, with breathtaking views of the Bitterroot Range and surrounding wilderness.

Look for new major improvements to the attraction -- widened roads, a



**New SVR GAS Mountain Bike park, course and trails at zip line**

professionally designed mountain bike park and trails as well as a snowboard park for winter. The zipline's office and welcome center is conveniently located in downtown Wallace at 5th & Cedar Streets. Reservations are recommended; call (208) 556-1690. Check their websites for more information: [ZipWallace.com](http://ZipWallace.com), [SVRGAS.com](http://SVRGAS.com)

SILVER STREAK, SVR GAS PHOTOS



**Daily Scenic Gondola Rides**



**Idaho's largest indoor waterpark**



**Lift Served Mountain Biking**



**SILVER**  
Mountain Resort

208.783.1111

[silvermt.com](http://silvermt.com)

# Play, learn and recharge

The Mining Heritage Exhibition stretches over four acres of park and river front adjacent to the grounds of the Wallace Visitor Center (I-90 Exit 61).

The free, outdoor, family friendly museum depicts the evolution of local mining through numerous hands on exhibits and new interpretative signs, inviting those of all ages to learn what it takes to wrest mineral riches from miles below the surface.

Plus 24/7 year-round restrooms, numerous picnic tables along with water and electric outlets and large parking area make the exhibition, park and Visitor Center the perfect place to rest, refresh and recharge from any road trip or visit.



Wallace's free, hands on four acre outdoor mining exhibit educates and entertains all ages, year round



LIZZIE KETTEL IMAGES

• RAFT • SWIM • KAYAK • SKI • HIKE • BIKE • RAFT • FISH • ATV • HUNT



## Ridge River Realty

**Margie Todd**

*Happy to Help*



Licensed in  
Idaho & Montana

**(208)818-4035**

512 BANK STREET, SUITE 1 • WALLACE, IDAHO • [RIDGEIVERREALTY.COM](http://RIDGEIVERREALTY.COM)

• RAFT • SWIM • KAYAK • SKI • HIKE • BIKE • RAFT • FISH • ATV • HUNT

# Step into the city woods

The easiest way to be in the midst of forest surrounding Wallace: climb our extensive, scenic stair system.

Wend your way up the steep south hills through both deciduous and pine woods, where sightings of wildlife like moose, deer and elk are not uncommon.

Find restored stairs at every numbered street from Third through Seventh. At over 800 steps, (the equivalent of 46 story building), the stairs first enabled city folk an easy route to hillside homes. Restoration of the system began in 2011 and is nearly complete today. Most stairways are 100 feet long and have 76 to 84 steps, including those with landings and benches. New maps at the Visitor Center, Mine Museum or Railroad Museums. Interpretive signs are also at the Fifth and Bank staircase.



## On your markets, ready, set, GO!

How can you tell it's summer in these parts? Follow the bargain hunters. Some of the region's largest flea markets bookend the sunny season, with a new third one smack in the middle. St. Regis, Montana starts things off every Memorial Day Weekend with Montana's largest outdoor market. Then come July 4th weekend visit the new West Wallace Flea Market a quarter mile west of the town's Visitor Center. Finally Labor Day Weekend, see 100s of vendors underneath the freeway on city streets and the depot grounds. Kids games, live music, loads of fun and best of all: killer deals on stuff you didn't even know you needed.

**2022-2023**  
**OUR 40<sup>TH</sup> YEAR**

**SIXTH STREET**  
**MELODRAMA**  
**& THEATER**

**PROUDLY PRESENTS**

**Live Theater!**

**Summer Melodramas**  
Wednesdays through  
Saturdays, 7 p.m. Sundays, 2 p.m.

**All summer tickets: \$10**  
Other productions in  
November, December  
and March

**212 Sixth Street**  
Wallace, ID. 83873  
**208 752-8871 877-SIXTHST**

To purchase tickets online and  
see production schedules, visit:  
**sixthstreetmelodrama.com**

**Under the Freeway**  
**Flea Market**  
ALWAYS Labor Day Weekend  
Good Buys & Special Deals

Non-Profit organizations are offered  
**FREE booth spaces!**  
Vendor & Volunteer information:  
Northern Pacific Depot Museum  
208-752-0111  
npdepot@gmail.com

## SLEEPS

All phone numbers  
208 prefix unless  
otherwise noted

### HOTELS & MOTELS

**BITTERROOT MOTEL**  
60330 Silver Valley Rd. Wallace 753-0001

**BROOKS HOTEL**  
500 Cedar St., Wallace 556-1571

**HERCULES INN**  
Front & 2nd St., Wallace (509)435-3005

**FAIRBRIDGE INN & SUITES**  
601 Bunker Hill Ave., Kellogg 783-1234

**LUX ROOMS**  
601½ Cedar St., Wallace (206) 909-7472

**RYAN HOTEL**  
608 1/2 Cedar St. Wallace 753-6001

**SILVER MOUNTAIN RESORT/LODGE**  
610 Bunker Hill Kellogg (866)345-2675

**STARDUST MOTEL**  
410 Pine St., Wallace 752-1213

**WALLACE INN**  
100 Front St., Wallace 752-1252

### RV PARKS/CAMPGROUNDS

**WALLACE RV PARK**  
108 Nine Mile Rd., Wallace 753-7121

**BY THE WAY CAMPGROUND**  
907 N. Division Pinehurst 682-3311

**COUNTRY LANE RIVER RESORT**  
610 Old River Rd. Kingston 682-2698

**CRYSTAL GOLD MINE RV PARK**  
51931 Silver Valley Rd. Kellogg 783-4653

**EAGLE CITY PARK CAMPGROUND**  
Eagle City 699-8128

**LOST MOOSE CAMPGROUND**  
27706 S Latour Creek Rd Cataldo  
682-3555

**MULLAN TRAIL** 725 River St. 744-1444

### VACATION RENTALS

**A COMFY COTTAGE**  
207 Pine St., Wallace 699-7554

**THE CEDAR HAUS**  
317 Cedar., Wallace (520) 241-2807

**THE CHURCH HOUSE**  
DiscoverWallace.com/churchhouse

**THE ELM HOUSE**  
Wallace 786-4261 airbnb.com

**LUX ROOMS**  
6th & Cedar Wallace (206)909-7472

**ONA'S HOUSE**  
319 Pine St., Wallace 784-8925

**IDAHO BUILDING**  
415 6th St. (IdahoBuilding.com)

**MANOAH 611** (WallaceId.fun/stay)

**STAGECOACH HOUSE**  
DiscoverWallace.com/stagecoach

**THE TABOR HOUSE** (Wallace)  
taborhousevacationrental.com 782-4261

**THREE KINGS OF WALLACE** Book at VRBO.com

VISIT OUR "STAY" PAGE AT WALLACEID.FUN FOR MORE DETAILS ON THESE & OTHER LODGING OPTIONS



**Indoor Pool & Hot Tub**  
•Cafe •Free Wi-fi  
•100% Smoke Free

**(800) 643-2386**  
**thewallaceinn.com**



**100 Front St., Wallace, Idaho 83873**

# A history of seduction

The compelling story of Wallace's long running Red Light District is retold today at the Oasis Bordello Museum (reopened this year after a two year hiatus) and the focus of a new photography exhibit at Wallace's Barnard-Stockbridge Museum. That history is also a best-selling book and documentary. Based on the 2017 treatment by local PhD Heather Branstetter, the short film *Wallace* -- like the Branstetter book -- gets rave reviews for its no-nonsense portrayal of



the industry and town. *Wallace* was featured at Sun Valley and Aspen film festivals. Want more of a old time Wallace experience -- how about sleeping in an old bordello? On the corner of 6th and Cedar Streets are the recently renovated Lux Rooms, now a boutique hotel. The hotel has several packages available along with sister property the Silver Corner Bar. **Reservations: (206)909-7472 [airbnb.com](http://airbnb.com)**

# A Gold Mine of family fun

Just nine miles west of Wallace lies the Crystal Gold Mine & RV Park. Prospectors first discovered a gold bearing vein there in 1879 and mined it for three years before

abandoning the site.

The mine was lost for over a hundred years. In 1991, the then owner saw water seeping out of the hillside. Hoping it was a spring, he dug into the bank and partially uncovered the portal. In 1996 the site was rejuvenated as a tourist attraction. Visitors will see the smithsonite crystals that have formed on the walls, and quartz veins with gold and silver. Gold Panning included with tours during summer months.

**DIRECTIONS: I-90 Exit 54 to the Miners Memorial, turn left (west) on Silver Valley Road for two miles. 208.783.GOLD [goldmine-idaho.com](http://goldmine-idaho.com)** CRYSTAL GOLD MINE IMAGE



**MUCHACHOS TACOS**

**Friday-Tuesday 12-7**  
**208.661.2062**  
517 1/2 Bank St. Wallace  
FRESH & DELICIOUS, ALWAYS FRIENDLY

**SHOP THE WORLD'S LARGEST RAM DEALER**

**800.635.8000 • DAVESMITH.COM**  
**210 N. DIVISION ST KELLOGG, ID**

**DAVE SMITH**

Please note: hours & menus can change with season. Please visit our website, [WallaceId.fun](http://WallaceId.fun) for the latest info.

**1313 CLUB** 608 Bank Street  
Breakfast, Lunch and Dinner  
208.752.9391

**BLACKBOARD CAFÉ/TODD'S**  
600 Cedar Street 208.556.5648  
Daily Lunch & Dinner Dine-In  
Fresh Baked Pastries & Deli

**BROOKS RESTAURANT & LOUNGE**  
500 Cedar St. 208.752.8171  
Breakfast & Lunch

**CITY LIMITS BREW PUB**  
108 Nine Mile Road  
Home of North Idaho Brewery  
Lunch & Dinner 208.556.1885

**COGS GASTROPUB**  
424 Sixth St. 540.454.5355  
Lunch & Dinner 11am to 10pm

**THE FAINTING GOAT**  
516 Bank St. Lunch & Dinner  
(208) 512-9010

**FOWL MOUTHS**  
5th & Cedar Sts. Wallace  
Wings, Sweet Tea & Fries 556-1690

**HARVEST FOODS**  
800 Bank St. 208.752.1233  
On the Go Full Service Deli & Bakery

**METALS BAR**  
514 Cedar Wallace  
Appetizers, Pizza more 208.556.5213

## EATS

**MUCHACHOS TACOS**

517 1/2 Bank  
Lunch & Dinner 208.661-2062

**MOM'S VINTAGE EATERY - WALLACE**  
519 1/2 Cedar St 208.556.1668  
Sandwich shop & Fresh Baked Pies

**THE MOSSY MOOSE**  
418 6th Street Wallace 208.956.0476  
Coffees, pastries and treats

**OLIVER'S MERCANTILE**  
605 Bank Street. Open daily 11 am  
Appetizer menu

**THE OUTLAW BAR & GRILL**  
209 Hunter Ave. Mullan Open daily 11 am  
Lunch & Dinner 208.744.1120

**RED LIGHT GARAGE**  
302 5th Street 208.556.0575  
Breakfast, Lunch and Dinner

**SLAB MEAT CO.**  
207 5th Street In the Red Bus  
208.329.5322

Breakfast, Lunch and Dinner

**6TH & CEDAR**  
Sixth & Cedar Sts. In the Wallace Corner  
Coffees & treats

**SIERRA SILVER MINE TOUR**  
509 Cedar Street Wallace 208.752-5151  
Old Fashioned Ice Cream Parlor

**TRAILSIDE CAFÉ @ WALLACE INN**  
Breakfast, Lunch and Banquets (all year).  
Dinner (May-Oct) 208.752.1252

**Named one of Idaho's top 5 diners**

**Mom's Vintage Eatery**

**Summer Hours**  
**Tues-Sat. 6-6**  
**Off season: Wed-Sat. 8-4**

**(208) 556-1668**

**Restaurant, Gift Shop & more**  
**519 1/2 Cedar • Wallace, Idaho**

# A feast of dining choices,

Looking for a place to eat? Wallace doesn't disappoint. The little town at the Center of the Universe offers a raft of choices, not one of them a national chain. Here's a rundown of your options in Wallace and nearby towns:

**AT CITY LIMITS BREW PUB**, brew masters put out some of the region's finest local beers matched with a varied lunch and dinner menu. Plus brewery tours, a full bar and more. A popular spot post ski, bike or snowmachine ride. Located 100 feet from the Hall of Fame Trail of the Coeur d'Alenes at 108 Nine Mile Road. 208.556.1885 [citylimits-brewpub.com](http://citylimits-brewpub.com).

Look for the space ship. It's parked in the lot at **THE RED LIGHT GARAGE** on Fifth and Pine Streets. A must stop for youngsters or just the young at heart, their walls, halls, and ceiling are bedecked with every kind of road sign from across the Pacific Northwest, along with campaign memorabilia, musical instruments license plates from every American state.

Best known for their Huckleberry Shakes, but enjoy classic burgers, a full breakfast menu and fully stocked bar. Open for breakfast, lunch and dinner. 208.556.0575

**THE BLACKBOARD CAFE & MARKETPLACE** offer a one-two punch for both sit down and on the go meals. The cafe features gourmet sandwiches, soup and salad for lunch and classic Italian dinner in the evenings. The market offers deli fair, espresso and fresh baked goods. The Cafe



is open from 11 am - 3 pm, lunch. Dinner runs from 5-8pm. Market is open 8am-9pm. Weekend breakfasts. 600 Cedar St. 208-556-5648. [blackboard-marketplace.com](http://blackboard-marketplace.com)

**COG'S** has earned a loyal following for its filling take on pub food. Proprietor gourmet chef Alex Mayberry marries mouthwatering dining and grab & go offerings with gorgeous views of mountain and city



scape. Plus a varied selection of craft brews on tap, full bar and the ambience of an 1890 built building that has served as a cigar shop & court house. Open daily 11am-10pm at Sixth & Bank, the Center of the Universe. [cogs@discoverwallace.com](mailto:cogs@discoverwallace.com)

**THE FAINTING GOAT** is an elegant yet casual dining experience. Exquisite entrée and appetizer selections offered in an intimate, welcoming setting makes for a great dining experience not out of place in any major metropolitan setting anywhere. New this year, their brick pizza oven. Open for lunch and dinner year-round. (Closed Wednesdays). 208) 512-9010, 516 Bank St. [thefaintinggoatawinebar.com](http://thefaintinggoatawinebar.com)



Full menu, now featuring brick oven pizza, paired with an unsurpassed wine selection, tap room, and great service in an elegant, historic setting. Open 11am-8pm daily. Closed Wednesdays

516 Bank St. (208) 512-9010 Wallace

# all local and no chains

**FOWL MOUTHS** boasts Wings, Sweet Tea and Fries. That's it and that's enough for Wallace's newest dining experience. Owner Scott Haney brings a bit of his native Texas to the downtown. In the old bank building at Fifth & Cedar in Wallace. It shares the space with his other local ventures, the Zipline and SVR GAS bike park.

**THE 1313 CLUB** has about as diverse a menu as you'll find in town. Appetizers, Mexican, Burgers, Sandwiches, Dinners and more. The 1313 has plenty of atmosphere with every possible kind of mounted game from Buffalo to Jackaloupe, and a virtual cornucopia of local and regional memorabilia. 608 Bank St. 208.752.9391 [1313club.com](http://1313club.com)

**MUCHACHOS** **TACOS** is one of the latest additions to the downtown. From the management of Coeur D'Alene's Tony's on the Lake, owner Traci Arcireno brings authentic Mexican cuisine, with fresh ingredients, gourmet spices, personalized service in a fun upbeat setting. 517 1/2 Bank 208 661-2062.

Named one of Idaho's Top Five Diners, **MOM'S VINTAGE EATERY** is legendary for its huge helpings, friendly service and giant sized homemade pies. Find the restaurant, gift shop



and pie shop at 519 1/2 Cedar in Wallace. 208.556.1668.

Just east of town is a can't miss experience. **THE OUTLAW'S** legendary hamburgers can satisfy the most demanding of appetites. Full menu, beer and liquor menu as well. Take exit #68 in Mullan, hit the downtown and there they are at 209 Hunter. 208 744-1120. Open till 10pm daily, midnight on weekends.

Wallace is also home to two restaurants in hotels. A popular locals' spot, **THE BROOKS HOTEL** offers the classic diner experience in newly

rennovated dining room and kitchen. A dozen tables, friendly personable staff and complete breakfast and lunch menu. Salad & soup bar, too. Open seven days on the corner of Cedar and Fifth Streets. 208.556.1517.

Just off Interstate 90 at exit 61, **THE TRAILSIDE CAFE AT THE WALLACE INN**

is the town's most accessible restaurant from the interstate. The Café caters to the traveler and business person with a modern restaurant. Feast your eyes on the menu or views of mountain, forest or river scape. Open seven days 100 Front St. 208.752.1252 [thewallaceinn.com](http://thewallaceinn.com).

(CONTINUED P. 23)

500 CEDAR ST. WALLACE, IDAHO 83872

KEEP UP WITH US ON OUR WEBSITE!  
[WWW.THEBROOKSHOTEL.COM](http://WWW.THEBROOKSHOTEL.COM)

HOTEL: (208) 556-1571  
RESTAURANT: (208) 752-8171

**BROOKS HOTEL**

HISTORIC DOWNTOWN  
WALLACE, IDAHO

HOTEL | RESTAURANT | LOUNGE | SPA

FRIENDS ARE FAMILY HERE

# Suds that save the day

It was in the aftermath of 1910's Big Burn that beer earned celebrity in Wallace. One third of the town was incinerated in the blaze, part of the three million acres burnt in 36 hours across the West.

The fire had so polluted local water drinking supplies that authorities forbade anyone in town to drink anything but beer for three days after the flames were extinguished.

The town celebrates that history with a one of a kind annual craft beer pub crawl. A dozen of Wallace's unique watering holes host both local and regional brews, including the award winning beers made here.



Enjoy Wallace brewed beers from North Idaho Mountain Brew and Wallace Brewing Co.



**NORTH IDAHO MOUNTAIN BREW:** NIMB's motto is "brewing one great beer at a time." Choose from ales like Baldy Blonde, Sunset Red, or dark Black IPA. Try their Pulaski Porter with hints of chocolate and coffee. The brew is named after one of the heroes of that Great Fire, Forest Ranger Big Ed Pulaski. (If you get real lucky, you might happen upon the local amateur brew club that meets at NIMB regularly). North Idaho Mountain Brew is

located inside the City Limits Brew Pub at 108 Nine Mile Road, **208-556-1120** [northidahomountainbrew.com](http://northidahomountainbrew.com)

**WALLACE BREWING:** In a town famous for its silver mines, they claim beer is the new gold – and they've set out to prove it. The brewery pays homage to the town's wild past, with mining and bordello-inspired monikers such as 1910 Black Lager, Jack Leg Stout, Vindicator, Huckleberry Shandy, Red Light Irish Red Ale, Wallace Strong and Idaho Select Light Lager. Taste them all in the Orehouse Tasting Room. And the Brewery isn't just for humans. Canines are welcome as well. Find them at 610 Bank Street, 208-660-3430. Find them online at [wallacebrewing.com](http://wallacebrewing.com). Or find their brews in your local grocer. Wallace Brewing ships product across the Northwest. *NORTH IDAHO Mtn. Brew/WALLACE BREWING IMAGES*



Stop by the orehouse tasting room for a delicious locally brewed beer.



610 Bank Street  
Wallace, ID  
[www.wallacebrewing.com](http://www.wallacebrewing.com)

## Award Winning Cocktail List!



- Monthly, First Sunday Wine Tastings hosted by Sommelier, Jocelyn
- Best Wine Selection in the Silver Valley
- 40+ Beer Selection
- Friendly, Knowledgeable Staff

The second floor of the Corner is home to the LUX ROOMS, a former bordello, now a boutique hotel.

**208.753.4261 • 601 Cedar Street, Wallace, Idaho**

# No chains: a feast of local dining choices

FROM P. 21 Want some bar appetizers? Here's a couple of options. **OLIVER'S MERCANTILE** has just added a kitchen to serve hungry shoppers in their store and drinkers in their bottle shop. Great ambiance, unique Wallace and Idaho themed goods and apparel -- and now eats. Find them at 605 Bank in downtown Wallace.

And may we suggest **THE METALS**? It's Wallace's oldest watering hole. If you're in the mood for a late, late night meal, they are the place to go: a complete appetizer menu—ranging from cheese sticks, pizza, chicken strips and more. Located at 514 Cedar 208-752-5213.

Sometimes a body just needs a quick bite. A solution: hit the Deli's at our local grocers.

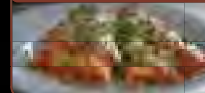
In Wallace that's **HARVEST FOODS**. It's at 800 Bank Street on the east end of town. Burgers, finger steaks, sandwiches and specials of the day all prepped that day in their in store bakery and deli. Give them a call ahead of time at 208-752-1233.

In Osburn, **STEINS** Deli also offers fast fresh to go. See them at 712 E. Mullan right across from Mom's Vintage Eatery. 208.752.5021. In Kellogg **YOKE'S** offers a large variety of on the go food as well. Stop by their store at 117 Hill St. just off I-90. Call ahead at 783-1171.

## BLACKBOARD MARKETPLACE

600 Cedar St, Wallace • 208-556-5648 • Open Daily 8am-8pm

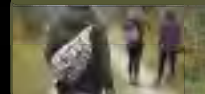
Blackboard Café



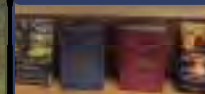
Market & Bakery



Fox & Hare Mountain Wear



Todd's Bookstore & Coffee



All under one roof  
[blackboardmarketplace.com](http://blackboardmarketplace.com)



"GASTROPUB: A place to meet for good drinks & craft beers, serving innovative yet approachable bar food."

•Wed.-Sun. Noon to 10pm  
LATE NITE MENU AVAILABLE TIL 10PM

scan for complete menu and drink offerings



424 6TH STREET  
WALLACE, IDAHO  
208.682.6220

At the Center of the Universe



LOOKOUT PASS IMAGE

**AWESOME POWDER. TINY LIFT LINES. 15 MINUTES AWAY.**

## Super snow adventures await

Some of the Northwest's deepest powder, abundant snow-covered trails and seemingly limitless uncrowded back country make winter a real wonderland here. Enjoy alpine and cross country skiing, snowboarding, snowshoeing, snowmobiling, tobogganing, tubing and even ice fishing for whitefish.

You can ski Lookout Pass and Silver Mountain ski resorts from November through April. Lookout is one of the first ski runs to open each winter in the Pacific Northwest.

In fact, in recent winters, Lookout received nearly 500 inches and Silver over 400 inches of the white stuff. Both mountains are groomed, but the powder enthusiast can often find uncut trails and spring "corn snows" that are very skiable.

Each resort is within a 15 minute drive of Wallace.

**Snowmobiling** trails are groomed from mid-December until early March. Fourteen trails are available ranging from 12 to 65 miles in length. Snowmobiling is allowed on the streets of Wallace (weather and snowpack permitting).

**SNOWMOBILE INFORMATION:** Coeur d'Alene River Ranger District at (208) 783-2363 or Idaho Parks & Recreation, (208) 682-3814. Trail information available at the Historic Wallace Chamber of Commerce. For snowmobile road conditions in Wallace please email [wallacesnowconditions@gmail.com](mailto:wallacesnowconditions@gmail.com)

**SKIING INFORMATION:** Check out Silver Mountain's year round events and specials at [silvermt.com](http://silvermt.com). Visit [skilookout.com](http://skilookout.com) for complete information and learn about Lookout's Free Ski School for kids. (Lookout Pass is the original Idaho ski area with documented skiing in 1935).

Authentic 1881 Gold Mine Tour!  
Crystal Gold Mine & RV  
in Historic Kellogg, Id



[www.goldmine-idaho.com](http://www.goldmine-idaho.com)  
208-783-GOLD(4653)  
With Seasonal Gold Panning

433644

# Wet & wild:

Spring time on Wallace's South Fork **RIGHT:** Fishing on the St. Joe Near Avery. CREDITS: MIKE FEILER, VISIT IDAHO

North Idaho and the Silver Valley offer an abundance of fish and wildlife for hunters, fishermen, and other outdoor enthusiasts. Two major river drainages, Coeur d'Alene River and St. Joe River systems, and several mountain lakes provide fishing for Rainbow, Westslope Cutthroat, and Brook trout. Hunters can bag plentiful elk, white-tailed deer, and black bear; there is also a limited season on wolves.

The South Fork of the Coeur d'Alene wends its way past Wallace and the Silver Valley to Cataldo, while the North Fork can be accessed by heading north out of Wallace via State Rt. 456. Take the same road south out of town to the St. Joe. (See map pp 24-25). Check the Idaho Department of Fish and Game regulations and information for details.

These rivers are also popular for kayaking, canoeing, rafting and tubing. For those who enjoy high country fishing, hiking, or backpacking, there are several mountain lakes within a short distance of the Silver Valley. Info: contact the U.S. Forest Service [www.fs.usda.gov/ipnf](http://www.fs.usda.gov/ipnf) 208.783.2363 or Wallace Ace Hardware 208.556.1164



**GET YOUR SUMMER SUPPLIES HERE!**  
HUNTING, CAMPING, & FISHING SUPPLIES - LIVE BAIT & IDAHO STATE FISHING & HUNTING LICENSE VENDOR, PROPANE TANK REFILLS AVAILABLE AND MUCH, MUCH MORE! STOP IN AND CHECK IT OUT.  
**716 BANK STREET** **WALLACE, ID**  
CONTACT US AT **(208) 556-1164**

# Stories worth telling



NBC Television's Willie Geist introduces a story about Wallace that aired on the Sunday Today Show.

**Wallace is a place that has long captured the imagination of America's story tellers.**

The character of the little town that could and still does has spawned two NY Times best sellers, two multimillion-dollar Hollywood films, numerous print and broadcast treatments, even an acclaimed Broadway play.

Legendary CBS newsman Charles Kuralt was On the Road here.

Authors Tim Egan and Greg Olsen wrote on the 1910 Great Fire and the Sunshine Mine Disaster. PBS's American Experience featured Wallace in a 2014 multi-part documentary, while Idaho Public Television's Idaho Experience devoted major portions of its 2017 *Titans* series to the town.

Wallace has recently been featured on NBC's Today Show, Comedy Central and Fox Business News, with pieces in regional TV markets in Boise and Spokane along with coverage in the *NY Times* and *Washington Post*. Find these accounts and more on our website [Wallaceld.fun](http://Wallaceld.fun). Find the books referenced here and more titles in our local stores and museums.



**All 3 of Cuyle's books have wicked & true tales about Wallace!**

**NOW AVAILABLE AT [Amazon.com](http://Amazon.com) AND IN LOCAL SHOPS AND BOOKSTORES**



# Zip Fly

## 10 Zip Lines

Ranging From 325' to 1800'  
Speeds up to 60 mph



## SVR GAS Bike Park

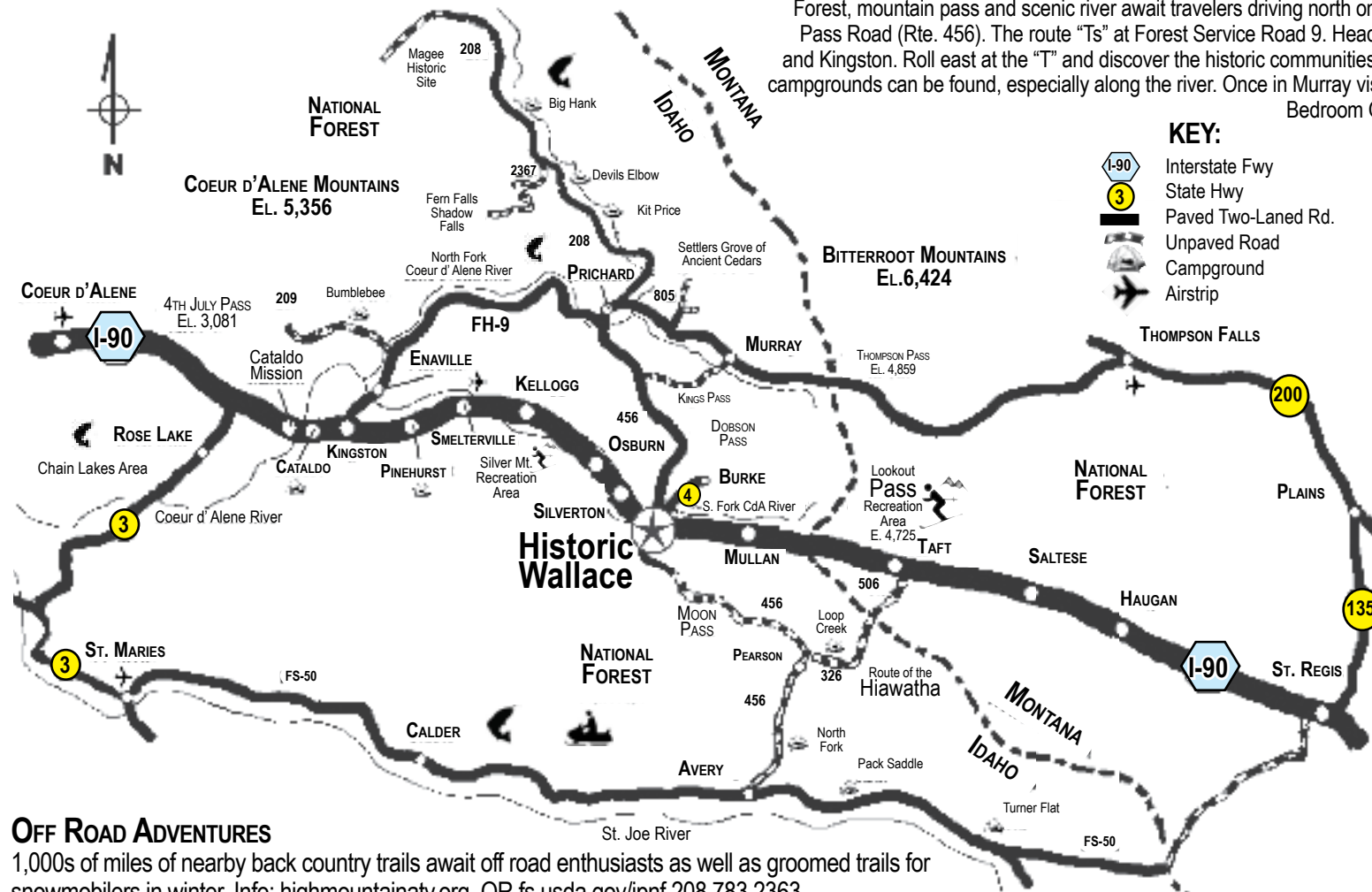
Dozens of trails over 200 plus acres

[ZipWallace.com](http://ZipWallace.com) [SVRGas.com](http://SVRGas.com) **208 556-1690** 315 5th St. Wallace, Idaho

# Historic Wallace Recreation Area

## North Fork/Murray/Prichard/Kingston/Enaville

Forest, mountain pass and scenic river await travelers driving north on Wallace's Sixth Street which becomes Dobson Pass Road (Rte. 456). The route "Ts" at Forest Service Road 9. Head west and follow the road along river to Enaville and Kingston. Roll east at the "T" and discover the historic communities of Prichard and Murray. Many picnic areas and campgrounds can be found, especially along the river. Once in Murray visit the old gold mining camp's famous cemetery, Bedroom Goldmine, Sprag Pole Restaurant and Museum.



### MILEAGE TO HISTORIC WALLACE

| FROM:          |           |
|----------------|-----------|
| Seattle        | 369 miles |
| Spokane        | 79 miles  |
| Post Falls     | 57 miles  |
| Sand Point     | 91 miles  |
| Coeur d'Alene  | 47 miles  |
| Kellogg        | 12 miles  |
| Osburn         | 4 miles   |
| Mullan         | 7 miles   |
| Murray         | 21 miles  |
| Cataldo        | 20 miles  |
| Lookout Pass   | 11 miles  |
| Taft           | 15 miles  |
| St. Maries     | 57 miles  |
| Pearson        | 20 miles  |
| Avery          | 28 miles  |
| Saltese        | 22 miles  |
| St. Regis      | 42 miles  |
| Yellowstone    | 415 miles |
| Glacier Park   | 210 miles |
| Thompson Falls |           |
| via Murray     | 70 miles  |
| via St. Regis  | 98 miles  |
| Clark Fork     | 58 miles  |
| Missoula       | 114 miles |
| Kalispell      | 151 miles |
| Whitefish      | 164 miles |
| Butte          | 234 miles |

### OFF ROAD ADVENTURES

1,000s of miles of nearby back country trails await off road enthusiasts as well as groomed trails for snowmobilers in winter. Info: [highmountainatv.org](http://highmountainatv.org) OR [fs.usda.gov/ipnf](http://fs.usda.gov/ipnf) 208.783.2363



### CHECK "MOST AMAZING RIDE" OFF YOUR BUCKET LIST.

Trail Open May 27–September 18  
Reserve Your Seat at  
[RideTheHiawatha.com](http://RideTheHiawatha.com)  
208.744.1234



I-90 EXIT 0 AT THE ID/MT LINE.



# Hollywood in Wallace

Hollywood and Wallace go back a long time beginning with 1920s era silent films and as the backdrop of major motion pictures in the 1980s and 1990s. Wallace is also the birthplace and childhood home of movieland star Lana Turner. Movies shot in and around here include:

**DANTE'S PEAK (1996)** was an adventure film from Universal Pictures starring Pierce Brosnan and Linda Hamilton shot largely in Wallace and nearby communities. Released in 1997, the movie depicts how a fictional Dante's Peak town (Wallace) gets obliterated by a malignant volcano of the same name.

Each year thousands of Dante's Peak fans flock to Wallace. Props from the film can be seen at the Wallace District Mining Museum including the Dante's Peak Museum sign and prop styro-foam "bricks" used in the disaster scenes. *Dante's Peak* for sale at the Wallace District Mining Museum, The Northern Pacific Railroad Museum, and Sierra Silver Mine tour.



**Center:** The movie poster from the 1997 Disaster flick *Dante's Peak*, starring Pierce Brosnan and Linda Hamilton, filmed here. **Right:** Born 1921 in Wallace's Providence Hospital Lana Turner grew up to be one of Movieland's biggest stars in the 1940s & 50s. A new book about her early life by Cynthia Nunn has been published in 2020.

**HEAVEN'S GATE (1979)**, a western epic from director Michael Cimino and starring among others Kris Kristofferson, Christopher Walken, Jeff Bridges, Willem Dafoe, John Hurt and Mickey Rourke, contains footage filmed in downtown Wallace. The United Artists film bombed at the box office when it was first released in 1981, helping to bankrupt that studio. A director's cut was released in 2012, however, and that version made the BBC's list of best 100 American films -- referring to it as a "modern masterpiece." Memorabilia from the film can be seen at Wallace museums.

**FRIVOLOUS SAL (1925)** The action scenes in the 1925 silent film were filmed in mines around Wallace. Mine mills, tunnels, shafts and flumes were featured in this action "epic."

## AristoKats

Style  
with a  
Smile  
Katie Muller  
Cosmetologist



Women,  
Men &  
Children  
Hair, Nails  
& More  
artistokats@hotmail.com

717 E. Mullan Ave. 208.916.7824 Osburn, Idaho

## Sierra Silver Mine Tour

*Our 40th Year!*



### EXPERIENCE THE WORLD OF HARD ROCK MINING

1.25 HOUR TOURS DEPART  
EVERY 30 MINUTES  
MAY THRU OCTOBER

ICE CREAM  
PARLOR

509 Cedar St.  
Downtown Historic Wallace

**208 752-5151**

SilverMineTour.org

GO  
U  
N  
D  
E  
R  
G  
R  
O  
U  
N  
D

# Town stars on stage

## Live theater at Wallace's Sixth Street

Audiences have enjoyed live performances at Wallace's Sixth Street Melodrama and Theater since 1983.

Each summer the actors perform two different melodramas in July and August with other performances throughout the year -- including comedies and musical productions and a Christmas show. The Melodrama performs in the renovated Kelly Building -- which has its own colorful past, notably as part of the Lux Rooms Bordello.

**Info & show schedules:** [sixthstreet-melodrama.com](http://sixthstreet-melodrama.com) (208)752-8871 or 1-877-SIXTHST



## Critics rave over new drama based on Wallace

Named the best new play of the season, by the *Washington Post*, and raved by the *NY Times*, a play by Idaho Playwright Sam Hunter debuted on the Broadway stage in Fall of 2019.

*Greater Clements* is loosely based on Wallace's Sierra Silver Mine Tour, and is one of several of the playwright's dramas based in Idaho. The production was playing NYC's Lincoln Center prior to the covid closures. Look for it in Idaho and the Northwest as well, after premiers in major markets like Los Angeles and Chicago.

Washington  
Post

New York  
Times

# Charmed business model

From those fleeing the hassle of big cities to companies seeking a more friendly business climate, Wallace is seeing an influx of new residents, new investment and new business.

In the last few years dozens of entrepreneurs have purchased historic buildings and have either taken over long established businesses or started new ones.

New high tech, finance, manufacturing, hospitality and recreation concerns have all invested recently in town.

It's making for a rebirth of the downtown business core. At the same time the region's oldest industry, mining,



is forecasting double increases in production.

Factor in the major recent improvements in infrastructure including the completion of multi-million dollar

sewer and street paving projects, a new high speed internet provider, strong partnerships between government and business groups, as well as a generous college aid program for graduating high school seniors, and it's no wonder so many folks are coming here.

Contact us at the Chamber 208 753-7151 ([wallaceidahochamber@gmail.com](mailto:wallaceidahochamber@gmail.com)) if you are interested in making a move as well.

## Historic Home

with Modern Amenities

In Historic WALLACE, IDAHO

- SLEEPS 12
- 2 FULL BATHS
- LARGE DINING ROOM
- SPACIOUS KITCHEN
- PETS WELCOME
- BICYCLES AVAILABLE
- GAS BBQ
- SHUFFLEBOARD
- CD JUKEBOX
- VIDEO GAMES
- DEDICATED KIDS AREA

Close to Ski Resorts

# The Tabor House

All Season Vacation Rental

**ENJOY YEAR-ROUND!**

"The Tabor House is simply awesome. The layout, the rooms, the exceptionally well-stocked kitchen, the games (shuffleboard, air hockey, board games, Wii, etc.) the music collection, the dvds's... You get the picture"

Richard-Washington

**MAKE YOUR RESERVATION TODAY:**  
**1-208-682-0797**

[taborhousevacationrental.com](http://taborhousevacationrental.com)

RELIABLE  
HIGH-SPEED  
INTERNET  
SERVICE

AVAILABLE IN MULLAN, WALLACE, OSBURN,  
KELLOGG, SMELTERVILLE, PAGE & PINEHURST  
AND COMING SOON TO SILVERTON

RESIDENTIAL—BUSINESS—  
COMMERCIAL

WHEN IT COMES TO RELIABLE INTERNET SERVICE  
WE'VE GOT YOU COVERED

208.687.0700 [www.jrcda.com](http://www.jrcda.com)

# Honoring the fallen

The Miners Memorial Statue seven miles west of Wallace commemorates the ninety-one men who perished at the Sunshine Mine disaster in 1972, and recognizes the brave souls who waged a herculean rescue effort—some of whom who nearly died themselves, as well as the families whose lives were forever changed from the tragedy.

An underground fire broke out at the Sunshine Mine on May 2, 1972. Though no miners were in the vicinity of the fire itself, they were unable to escape the fire gases coursing through the work areas. The disaster was felt in every



home in the valley.

The Memorial Statue was dedicated exactly two years later. It stands 20 feet tall above its concrete base. It's located at Big Creek just off Interstate 90 (Exit 54) approximately seven miles west of Wallace. A companion sculpture celebrating mining families is at the Wallace Visitor Center.

Noted sculptor Ken Lonn was commissioned for both pieces. The eternal

flame in the miner's helmet at the memorial serves to remind us all of the strength of Idahoans, and especially of those in the Silver Valley.



HECLA LUCKY FRIDAY



Hecla Limited, Lucky Friday Mine  
P.O. Box 31, Mullan, ID 83846  
208.744.1751  
[www.hecla-mining.com](http://www.hecla-mining.com)

# Wallace is cosmic

The Probable Center of the Universe is a man-hole cover at the center of Bank and Sixth Streets in downtown Wallace. Commemorated 2004 with the tongue in cheek moxie this town is famous for, the designation is Wallace's way of fighting back against federal over-reach.

The town celebrates this bit of Wallace whimsy in September with a special rededication ceremony complete with Drum & Bugle Corps, courtesy gift replicas of 2004 Proclamation and a toast right in the middle of Sixth and Bank.

In 2020 the celebration caught the attention of NBC's Today Show as well as Fox Business News, both of whom ran stories on the very, very Wallace attraction. Don't believe Wallace is the center of the universe? Locals say, "prove that it isn't."



## Shoshone Golf

Big Creek Exit 54

208 784-0161

## 50%\* Green Fee

\*Present this ad and enjoy ONE 1/2 price Green Fee when a Green Fee and Cart Rental are purchased at regular price.  
*Offer Good Monday - Friday and Weekends after 2:00 p.m.*

Golf with a view Open April-October

# Putting 'a' round

Golfers have three gorgeous options to hit the links in the Silver Valley.

**The Shoshone Golf & Country Club** public course is six miles west of Wallace. To get there, take I-90 to exit 54 and follow the first road, heading west, on the south side of the free-way. Drive to the top of Gold Run Mountain for spectacular scenery and outstanding golf. (208) 784-0161.



## Pinehurst Golf

**Course, Pinehurst.** Located Sixteen miles west of Wallace. Take exit #45 off of I-90 at Pinehurst and drive one mile south to the club house, turn left at the four-way stop sign. The club house is on the right, just past the bank. (208) 682-2013

**Galena Ridge Golf Course, at Silver**

**Mountain Resort.** The newest golf course in the region featuring dramatic elevation changes and spectacular mountain and valley views.

Located in Kellogg, Idaho just west of Silver Mountain Gondola Village. *Tee times, info: (208) 783-1522 silvermt.com*

## The IDAHO BUILDING

When in Idaho, stay at IDAHO



- The 1917 historic Idaho Building
- Beautifully constructed and maintained for today's needs including fiber optic WiFi
- Located in convenient downtown Wallace
- Enjoy year-round activities

“ 5 stars! Great place and amazing location in downtown Wallace. Would given a 6th star for the location if there was one! – Nicolas, Arlington, Virginia

My husband kept remarking how much attention to detail was given to this place. – Emily, Colville, WA ”

415 SIXTH STREET | HISTORIC DOWNTOWN WALLACE  
idahobuildingwallace.com | idahobuilding@gmail.com  
Reservations: Airbnb Idaho Building Wallace Idaho

**FOWL MOUTHS**  
**W.T.F.**  
WINGS TEA FRIES

**WINGS SWEET TEA FRIES**

315 FIFTH ST. 208-556-1690 WALLACE

# Mark your calendars:

Spring, Summer, Fall or Winter. Pick a season or a reason and there's a festival or event in Wallace. Visit the events page of our website [Wallaced.fun](http://Wallaced.fun) for more details on these and all 2022 events.



ments: an arduous 1900-mile cycling trip from Missoula to St. Louis to test the military effective-

## Depot Day Car Show May 7.

Wallace kicks off the Summer Festival Season with Depot Day. Mix hundreds of classic cars on display all over Wallace Streets, vendor booths, kids' events, a beer garden featuring local micro brews as well as live music, real dancing in the streets and yes, more. (208) 752-0111 npdepot.org

## Gyro Days & Lead Creek Derby

**June 14-18.** It's BBQs, a radiothon, a carnival with midway rides and concessions right smack in the middle of Wallace -- all capped off with the Lead Creek Derby Saturday afternoon. Win a pot of cash if you guess correctly how long it takes a giant multicolored leather ball to bob down the river from Mullan to Wallace. Folks line the river the entire seven-mile route. Proceeds go towards local scholarships. Dean Cooper at [dean@wallacebrewing.com](mailto:dean@wallacebrewing.com)

**Buffalo Soldiers Nat'l Convention and Monument Dedication June 17** Join the festivities honoring Buffalo Soldiers on the Quascentennial (125th) anniversary of one of their most awesome accomplish-



ness of the bicycle in battle. The commemoration honors that achievement as well as Buffalo Soldiers' contributions in the region, including their several deployments to Wallace and North Idaho. [Ironriders2022.org](http://Ironriders2022.org).

**West Wallace Flea Market July 2-4** Enjoy an old fashioned small town Idaho flea market. Find treasures you didn't know you needed and can't live without. July Fourth Weekend. Located about 1/4 mile west of the Visitor on Silver Valley Road. Details: Rich Asher 208.752.1023

**Statehood Parade July 3** Ring in Idaho and America's birthdays with a big parade down the town's main drag.

# It's the year in festivals

## Wallace Blues Festival

**July 8-9.** Winner of the BEST BLUES FESTIVAL award several years running from the Inland Empire Blues Society, the Wallace Blues

Festival hosts Live Concerts on downtown Wallace Streets. [WallaceBlues.com](http://WallaceBlues.com) for tickets and details

## Wallace Huckleberry

**Festival & 5K Fun Run August 19-20.** A celebration of all things Huckleberry. Live music, dancing in the streets, raffles, Huckleberry pancake breakfasts, street vendors, kids' activities on the depot lawn, a dunk tank plus a 5K walk and run. 406.241.7134 [emma@stayduhar.com](mailto:emma@stayduhar.com) & [WallaceHuckfest.com](http://WallaceHuckfest.com)

## Under the Freeway Flea Market Labor Day Weekend.

Hundreds of vendors ply their wares in the protected open air space underneath I-90 and on the Depot Grounds. Plus live music, kids' games and more. Stroll from booth to booth and enjoy river, mountain and town scape. (208) 752-0111 [npdepot.org](http://npdepot.org)

**Center of the Universe Re-dedication & Raffle Sept. 17.** A pure Wallace style event.



Celebrate the anniversary of the 2004 Mayor's Proclamation with toasts, Drum & Bugle Corps Salute, and guest dignitaries

-- including the last spotlight on I-90. Plus there's a raffle for silver and other prizes.

## Fall for History Sept..

**30- Oct. 2.** Celebration of Wallace's history and its designation as entirely listed on the National Register of Historic

Places. Speakers, historic home and museum tours, live theater reenactments and more.

## Hometown Christmas Dec.

**2-3 & 9-10** Enjoy lighting of the streets and historic buildings, crafts fair, the Winter Walk, Kids' Pageant, night time Light

and daytime Paw parades and downtown merchants specials.

## Extreme Ski-Jor, Presidents Day Week-

**end February 2023** A one of kind event with ATVs towing skier and snowboarders down Wallace streets. As competitors vie for cash and glory. (Weather dependent) [SkiWallace Facebook](https://www.facebook.com/SkiWallace) and [SkiWallace.com](https://www.skiwallace.com).

## Hometown Christmas Festival

DEC. 2-3 & DEC. 9-10

- Craft Fairs
- Santa Pics
- Parades
- Winter Walk
- Dickens Readings
- Blow molds
- Plays
- Pageants
- Tree Lighting
- Hay Rides



FUN FAMILY ACTIVITIES AT DOWNTOWN MERCHANTS, TOO

**HISTORIC WALLACE, IDAHO Exits 61 & 62 off I-90**

Sponsored by Historic Wallace Marketing Group



## 37th Huckleberry Festival

& 5K Walk/Run

FRI.-SAT. AUG. 19-20

- Crafts
- Food Vendors
- Special Events
- Music
- Kids Games
- and more!



**HISTORIC WALLACE, IDAHO Exits 61 & 62 off I-90**

# Four blocks to shop:

From souvenirs to sporting goods; weapons to precious metals, antiques to apparel, Wallace offers four blocks of shopping and services for visitors. (Find these merchants also on our website at [WallaceId.fun](http://WallaceId.fun))

**ANTIQUES:** **North Idaho Trading** bills itself as the weirdest little shop in the Northwest. Between the mermaid, all the taxidermy and the Wallace ephemera, there's a world of hidden treasures to be found at the store. 6th & Bank 753-2911.

**The Past-Present Shoppe** offers its own menagerie of items, always changing inventory and is fun just to stroll through the aisles. 413 Sixth St. 556-1500

**BOOKS & SOUVENIRS:** You can pick them up all through town at nearly every business. A great place to start are the museum gift shops. Look for books, jewelry, silver, and Wallace and Idaho themed apparel and

gifts there too.

The **Mining Museum** is at 509 Bank 556-1592 with a full gift shop while the **Depot Museum's** gift shop is at 219 Pine 752-0111. Pick up one of a kind photo souvenirs at the **Barnard-Stockbridge** at 412 Fourth St. 556-5580. The **Mine Tour** at 509 Cedar 752-5151 also has a gift shop full of souvenirs.

**JEWELS, GEMS AND SILVER:** **Johnson's Gems at the Center of the Universe** offers souvenirs as well, but their main stock in trade is precious gems, coins and jewelry. Plus collectibles,

books and a one-of-a-kind attraction their Galaxy Room with fluorescent minerals.

6th & Bank at the **Center of the Universe** 556-0983. **Idaho Silver** has been in the downtown for over 40 years offering fine jewelry from around the planet, but featuring silver items right from Silver Valley mines. 606 Bank 556-1171.

**APPAREL:** Find high quality Idaho and Wallace themed clothing and



3 Floors - Dozens of Vendors  
New Name • New Look • New Location  
Same Great Vendors • Same Great Service

**Past & Present Shoppe**  
Formerly Tabors

Downtown Historic Wallace, ID  
413 Sixth St  
(208) 556-1500  
Open Daily  
Look for our January "White Sale"

BRING THIS AD FOR A SPECIAL DISCOUNT

Vintage, Antiques, Collectibles

FEATURING WORK FROM LOCAL ARTISTS

SOUVENIRS, HOME GOODS & GIFTS

**THE WOODLAND MARKET & Studio**

Join our Fun Craft Classes

513 BANK ST. WALLACE, ID.  
[thewoodlandmarket.com](http://thewoodlandmarket.com)

# downtown Wallace

merchandise at **Oliver's Mercantile**. In the Old JC Penney store at 605 Bank, across from Wallace Brewing. The Blackboard Marketplace's **Fox & Hare Mountain Wear** is another must stop featuring name brand clothing and outdoor apparel - not out of place in any upscale ski town, but in Wallace and priced for Silver Valley pocket books. 6th & Cedar. 556-5648. **Fonks' Fabulous Finds** is another one of our favorites. Vintage clothing tastefully selected in the wonderful old Five and Dime Fonks store front. 518 Cedar 556-1700

**ARTS & CRAFTS:** Three must stops here. **The EurekaSally Gallery of Art and Chocolate** features artists, sculptors and craftsmen from around the West. Art & Craft classes too -- in the grand old Shoshone Building at 418 Fifth St. 406 212-5936. **Woodland Market** is all local craftsfolk. One of a kind merchandise, art & craft classes in a playful, cheery shop. 511 Bank. 208-819-2105.

**The Mossy Moose** has 60 local vendors over two floors in the old Rullman Men's store. Crafts, baked goodies, coffee and many mooses can be found throughout the place. 418 Sixth Bank.

**HEARTS, FLOWERS AND TATS:** We really don't know how to describe the Funky Monkey. Their biggest sellers are smiles.



Find local authors like Deb Cuyle in shops across Wallace

It's just plain fun with a variety of Kitschy shirts, signs, jewelry, cups plus coffees and beer and wine. 604 Bank St. 786-2278. Smiles also are on sale at **Sol & Serre**. The flower shop and more earns huge raves from clientel, so much so they stay super busy. If you don't see them in the store at 618 Bank next to Wallace Brewing, they're probably out on a delivery. Call them 509 768-1670.

If you need a smile tattooed somewhere other than on your face, see our friends at **Dan's Tattoo Shop**. Dan has

a well earned loyal Silver Valley following. Find him in the Shoshone Building next to EurekaSally. 412 Fifth St. 771-1717

**D'SPOT**  
Hair Care & Massage  
722 Bank Street  
Wallace, ID 83873  
(208) 556-0508  
Debbie Saylor  
Hair Stylist/Massage Therapist  
Open Wednesday - Saturday  
Evenings by appointment

4276889-0428

**EAGLE CITY PARK**  
35 ACRE PROSPECTING & CAMPING

Gold panning, sluicing, sniping, metal detecting, outdoor recreation & relaxing. **BEST OF ALL.... You Keep All The Gold You Find!**

25 miles from I-90 (Kingston/Exit 43 or via Wallace & Dobson Pass Rd.) between Prichard and Murray.

(208) 699-8128  
[GoldFeverMiningSupply.com](http://GoldFeverMiningSupply.com)

# It's a Bloom Town

How to make a beautiful place more beautiful? Add some flowers.

For over 20 years the Wallace Flower Project has bedecked city streets with hundreds of baskets and hay racks overflowing with flowering plants and greenery.

The baskets go up in May and stay up through the first week of October. Made possible by donations and with support of the city of Wallace along with an army of volunteers.

For more details or to contribute, visit the Wallace Flower Project's website: [GrowWallace.org](http://GrowWallace.org).



**In the Historic  
Wallace Corner**

**Wide variety of coffees,  
specialty drinks, adult  
beverages and baked  
treats.**

*Add a splash of spirits after 10am*



*Open Daily at 7am*

**6th & Cedar Sts. Visit us on Facebook Downtown Historic Wallace**

# Stay in cool in pools

Kellogg and Wallace boast plenty of ways to beat summer heat.

Reopening this spring after a multi-year, million dollar plus renovation project, Wallace's Historic Municipal



360° virtual tour. The Lodge also offers summer adventure packages for all summer activities including river rafting, biking, golfing, fishing, disc golf, tennis, geocaching, ATV adventures, and kids activities. **Info: 208.783-1111, ext 8247 [silvermt.com](http://silvermt.com). Groups rates and special rentals available.** SILVER MOUNTAIN IMAGES

Pool offers relief from the summer time heat, just steps from the Center of the Universe at Hotel and Sixth Streets.

In Kellogg Ride on North America's longest gondola into cool mountain air and ride down Silver Mountain's top rated Bike Park trails.

Even better stay at the resort's Morning Star Lodge and enjoy their Water Park as an amenity.

Take your pick of fun choices. Float the Lazy River, play on Minor's Island, hop on one of the tube slides for a wild ride, and visit the main attraction — Silver Rapid's FlowRider continuous surf wave. Visit their website to take a



**208-682-3311**

**907 N. Division • I-90 Exit 45**

**Pinehurst, ID 83850**

**[bythewaycampground.com](http://bythewaycampground.com)**

- Construction Materials
- Pre-mix Concrete
- Heavy Civil Construction
- Remediation & Reclamation

**Serving the Silver Valley for over 85 years**

**ZANETTIBROS.COM**

**P.O. Box 928 (208)752-1178 OSBURN, IDAHO**

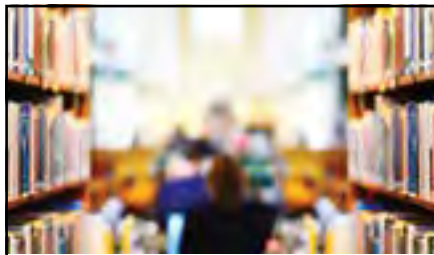


## Bring your group here

Wallace can be the perfect place to bring your convention or gathering. Just ask the groups who've come here in the past and those planning to come in the future. From a recent Porsche Car Club of America convention to a planned 2022 National Gathering of Buffalo Soldiers, Wallace can accommodate groups large and small in a variety of venues and group activities.

The Wallace Inn has a capacity for 130 in its convention center and side meeting rooms, while the Wallace Elks Lodge can host up to 300 conventioners in the upstairs and downstairs halls, bars and dining areas.

Add in a score of restaurants, bars and microbreweries, group team building activities like cycling, ziplines, mine and museum tours, walking tours of the town, plus plenty of shopping, parking and small town hospitality, and Wallace may be the perfect place to plan your gathering or party. Contact us here at the chamber to learn more: [WallaceldahoChamber@gmail.com](mailto:WallaceldahoChamber@gmail.com) or call 208 753-7151



### Wallace Public Library

**Mon & Thurs: 12:00 to 8:00**  
**T, W, F: 12:00 to 5:30**

**We also have FREE Internet access.**  
**Wireless hot spot available 24/7.**  
**No password required.**



**208-752-4571**  
**415 River Street**  
**Wallace, ID**

[wallacelibrary.com](http://wallacelibrary.com)  
[wallacelibrary@lili.org](mailto:wallacelibrary@lili.org)

4344594-0328

**Twin City Furniture**

*Member of Northwest's Largest Furniture Buying Group*

**Furniture - Floor Covering - Appliances**

**110 McKinley Ave. (208) 786-9351**  
**KELLOGG, IDAHO**  
*Delivery to the entire Silver Valley*

## On a mission for history



Idaho's Oldest standing building is Cataldo Mission. Located 30 miles west of Wallace just off Interstate 90, the Cataldo Mission offers stunning views both inside and out.

Erected in 1853 by Jesuit missionaries and Native Americans from the Coeur d'Alene Tribe, the completely restored mission building and adjacent state park and interpretative center are a must stop for any traveler and shutterbug. Open year round. (208)682-3814 [parksandrecreation.idaho.gov](http://parksandrecreation.idaho.gov) VISIT IDAHO IMAGES

### Ghost book and ghost buildings

With all the old buildings and homes in the area, there are plenty of stories about ghosts. From Maggie at Wallace's Jameson to the spirits at Spokane's Davenport Hotel author Deb Cuyle researched the stories and put them in the pages of her new book, *Ghosts of Coeur d'Alene and the Silver Valley*. Find it in at bookstores across the region.

Then there is the website dedicated to Wallace's Ghost Buildings. Not actual hauntings, but the buildings no longer standing. *Tour Wallace*, powered by local high school interns, local high tech company Gravis Tech and the local Morbeck Foundation, shows where many of the town's magnificent former structures, including two hospitals, the Samuels Hotel and the old Union Pacific terminal, used to stand. See for yourself at [gravistechtourwallace.com](http://gravistechtourwallace.com).

## 45<sup>th</sup> Annual Memorial Day FLEA MARKET

*Montana's Largest*  
**St. Regis, Montana**  
**May 28, 29, & 30, 2022**  
**Saturday, Sunday and Monday**  
**Daylight to Dusk**

Take Exit 33 off I-90  
Follow Signs to  
Community Park & Community Center



**VENDOR SPACES**  
24' x 20' Outdoor  
10' x 10' Outdoor Covered  
10' x 10' Indoor  
\$100/3 days - All spaces  
Set-up Allowed Friday  
From 9 a.m. to 8 p.m.

For additional information, contact:  
**Anita Bailey** 406-649-1304  
E-Mail: [StRegisMTFleaMarket@gmail.com](mailto:StRegisMTFleaMarket@gmail.com)  
Website: [StRegisMTFlea.org](http://StRegisMTFlea.org)

Advanced registration fees should be sent to: St. Regis Community Council, Inc., Box 278, St. Regis,

**BREAKFAST BARGAINS CONCESSIONS**

**PETS IN PARK MUST BE ON LEASH AND IN YOUR CONTROL**

**NO BIKES IN PARK**



# Wallace's wild past

There is so much to tell about Wallace, Idaho, a city entirely listed on the National Register of Historic Places.

The driving force behind our history is the region's mineral wealth.

Since 1884 over 1.3 billion ounces of silver have been mined here. One mine alone here—the Sunshine—has produced more silver than the entire Comstock Lode in Nevada. This place is one of the richest silver districts on the planet, or as is said here “The Silver Capital of the World.”

(And yes we are still mining here, supplying the minerals that make 21<sup>st</sup> Century communications, transportation, energy and other aspects of modern life possible).

That wealth has driven the story of Wallace, built the grand homes here that would not be out of place in San Francisco and the stately buildings of the downtown commercial district.

Those riches also



Wallace has a wild, rollicking history of literal backbreaking labor, overnight fortunes made and lost, war, gambling, bordellos, movie stars, Presidential visits and political assassination.



Wallace's 1903 visit from U.S. President Teddy Roosevelt

fueled two incredibly violent labor conflicts—the result of which was the blowing up of mills, trains, mass arrests and the assassination of an Idaho governor. (1892-1905)

Wallace's history is also entwined in the nature surrounding it. The pine covered Bitterroot Mountains and the riv-

ers and streams tumbling down its canyons have shaped this place. Perhaps the most significant natural event was the Great Fire of 1910 -- still the largest land fire in U.S. history. It burnt 3 million acres in 36 hours including a third of Wallace, and claimed up to 90 lives.

Teddy Roosevelt, who had visited Wallace in 1903, used that sacrifice of men and material as well as the heroes of that fire to cement the mission of the US Forest Service to preserve and protect our nation's forests.

The main reason however behind

Learn more about the women who helped build the town of Wallace...



Written by a local historian and featuring information from over a hundred oral history interviews

Heather Branstetter, PhD

WINNER OF THE CHARLES KNEUPPER AWARD FOR "MOST SIGNIFICANT CONTRIBUTION TO SCHOLARSHIP IN RHETORIC"

## ...and colorful present



FALL FOR HISTORY SEPT. 30-OCT. 2

Wallace's official historic designation is Interstate 90. In 1967 Federal and State govts wanted to pave over the town to build the freeway. But the town fought back and held up the project in court for 17 years.

By 1986 city fathers and mothers had quietly put every building in the downtown on the National Register. It was a major precedent for the National Preservation Act, and forced construction of a \$43 million bypass.

### Fall for History Festival in October

Today Wallace celebrates its colorful past in the most colorful time of the year -- October's Fall For History Festival -- with tours of historic homes and churches, speakers, historic enactments, plays and more.

It's all part of the many attractions here that continue to draw visitors and new residents to Wallace: safe, walkable streets, charming old town and complete services -- right on the doorstep to wilderness and nearly limitless outdoor recreation.

To learn more of our history, visit our museums and/or the history section of our website at [WallaceId.fun](http://WallaceId.fun).

And to become part of our present, just contact us: *Historic Wallace, Idaho Chamber of Commerce* 208-753-7151 [wallaceidaho-chamber@gmail.com](mailto:wallaceidaho-chamber@gmail.com)

**Mullan Trail**  
GAS • GROCERY • RV • CABINS  
725 RIVER ST. MULLAN, ID  
(208)744-1444



### The Jimmy Hendrixson "Real Estate Experience"

My goal is to obtain for you the best property for your needs, in your time frame, at a price that fits your budget.



HR Hendrixson  
Real Estate

Broker Jim Hendrixson (208) 512-1294

[jimmyhendrix54@hotmail.com](mailto:jimmyhendrix54@hotmail.com)

Agent Matt Borton (208) 512-4843 [mcborton@yahoo.com](mailto:mcborton@yahoo.com)

[HendrixsonRealEstate.com](http://HendrixsonRealEstate.com) 517 Bank St. Wallace, Id

# A Walk through History

| I-90 BUSINESS LOOP |    | 6             |    |    |    |    |    |    |    |    |
|--------------------|----|---------------|----|----|----|----|----|----|----|----|
| RIVER STREET       | 7  | KELLY'S ALLEY |    |    |    |    |    |    |    |    |
| PINE STREET        |    |               |    |    |    |    |    |    |    |    |
| CEDAR STREET       | 8  | 10a           | 10 | 13 | 14 | 16 | 19 |    |    |    |
| BANK STREET        | 41 | 43            | 42 | 34 | 31 | 27 | 26 | 22 |    |    |
|                    |    | 40            | 39 | 38 | 37 | 35 | 30 | 29 | 28 | 25 |
|                    |    |               |    |    |    | 36 | 24 | 23 | 21 |    |

**W**allace is unique because of its fine collection of turn-of-the-century buildings, some designed by nationally known architects. The entire town is listed on the National Register of Historic Places and whole blocks in the business district have remained virtually intact for a hundred years or more.

On your tour, look for architectural features such as cast-iron cornices and pilasters, terra cotta trim and decorative glass.

Some buildings still have the old glass windows with irregular surfaces. Records occasionally conflict on construction dates; in these instances the most likely dates are listed. Historic Wallace was destroyed by fire on July 27, 1890.

Only two structures survived. The surrounding forests were also spared. Reconstruction began immediately. This time predominately masonry structures were built for better fire resistance. Three of these 1890 vintage structures still grace the corners of Sixth and Bank streets.

1. N. PACIFIC DEPOT
2. JAMESON HOTEL
3. SWEETS HOTEL
4. CAMIA BLDG.
5. KELLY BLDG.
6. JOHN MULLAN STATUE
7. CARNEGIE LIBRARY
8. ELKS TEMPLE
9. SEARS McDONALD BLDG.
10. FURST BLDG.
- 10A. EAGLES LODGE
11. FOLLET BLDG.
12. HOLOHAN-MCKINLEY BLDG.
13. WALLACE CORNER/HOTEL
14. ARMENT BLDG.
15. CIVIC (TABOR) BLDG.
16. BI-METALLIC BUILDING
17. RYAN HOTEL
18. BARNARD STUDIO
19. WALLACE CITY HALL
20. GYDE TAYLOR BLDG.
21. SHOSHONE COURTHOUSE
22. HALE BLDG.
23. IDAHO PRESS BLDG.
24. COEUR D'ALENE HARDWARE
25. BARMON BLDG.
26. STEVENS BLDG.
27. MASONIC HALL & TEMPLE
28. HOWES AND KING BLDG.
29. MANHEIM BLDG.
30. ROSSI INSURANCE BLDG.
31. 1ST NATIONAL BANK BLDG.
32. THE IDAHO BLDG.
33. GEARON BLDG.
34. DELASHMUTT BLDG.
35. WHITE & BENDER BLDG.
36. AULBACH BLDG.
37. FINCH BLDG.
38. THE HERRINGTON HOTEL
39. ELKS LODGE
40. WALLACE POST OFFICE
41. SHOSHONE BLDG.
42. NORTH IDAHO TELEPHONE BLDG.
43. WALLACE MINING MUSEUM

# Wallace's Walking Tour

## START THE TOUR AT THE DEPOT.

**1. Northern Pacific Railroad Depot Museum (1902).** The depot was finished in 1902. The elegant brick and concrete edifice, "ornate and picturesque," was built in the chateau style. It is a reflection of the tastes of the company and the times. The concrete blocks were made from tailings from concentrates of major Coeur d'Alene Mining District mines. One of the finest depots of its type in the Pacific Northwest, this structure was moved from its original location on the north side of the river in 1986. Recipient of Idaho Preservation Council's Orchid Award.

**2. Jameson Hotel (1907), 304 6th St.** Built for Theodore Jameson to replace the frame structure of the same name and location, this pair of concrete block three-story

buildings originally had matching cornices. The facade has been painted. The structure has been restored with vintage furnishings indoors and out, and the interior is designed to make the two buildings function as one.

This work earned owners the Idaho Preservation Council 1979 Orchid Award. Maggie, the ghost, is a regular customer of the Jameson. The Jameson's original wood structure was

constructed in 1889.

**3. Sweets Hotel (1907), 308 6th St.**

**4. Camia Bldg. (1914), 218 6th St.** Three-story red brick building with

an overhanging metal cornice at the top and a somewhat narrower one between the first and second floors. This is thought to be the site of the origin of the 1890 fire disaster that leveled the entire downtown district. Now Albi's Restaurant & Gem Bar.



Wallace Elks Temple (#8 on the tour). To the immediate west is the Ryan Hotel annex, no longer standing. Wallace Barnard-Stockbridge Museum

# CHEERS!



- Wallace's oldest watering hole
- Come hoist one with the locals

OPEN daily 11am to 2am

•DARTS •BILLIARDS •PINBALL •ATM

**Historic METALS BAR**  
514 Cedar St. 208 752-5213 Wallace

Now Serving:  
Pizza, Fries, Mozzarella  
Sticks, Pot Stickers  
& Chicken Wings

Historic Wallace

## STAGECOACH HOUSE

"Beautiful brick cottage... a hidden gem!"

Old stagecoach stop, now a cozy 1BD home

DiscoverWallace.com/Stagecoach  
AirBnB.com/h/StagecoachHouse

Historic Wallace

## CHURCH HOUSE

"One of the most unique Airbnbs anywhere I've lived!"

Historic chapel converted to 2/1 home

DiscoverWallace.com/ChurchHouse  
AirBnB.com/h/Church

# The Wallace Walking Tour

**5. Kelly Bldg. (1891), 212 6th St.** Believed to be the oldest wood-frame structure in the business district. This two-story hotel with a flat roof has a projecting wooden cornice supported by wooden brackets. A smaller cornice separates the first and second floors on the front. In past years, the Kelly Building also had "female boarding" accommodations upstairs and a hardware store on the ground floor. Currently the home of the Sixth Street Melodrama & Theater.

**6. Capt. John Mullan Statue.** On the north end of 5<sup>th</sup> Street near the River. Captain Mullan engineered this route through the Bitterroot Mountains. Work on the military road began in 1859 and was finished in 1862. A path 25-feet wide was cut through the forest. Many bridges were built across the South Fork of the Coeur d'Alene River. By 1866, the Mullan Road had been reconstructed, and the route would play a principle role in the Coeur d'Alene Mining District's development. Today, Interstate 90 and State Highway 95A follow the Mullan

**7. Wallace Carnegie Library (1910-1911). River and 5th Sts.** Its Renaissance Neoclassic design

is found as a template on many small town Carnegie libraries. It is a portico live bay brick building with a low-pitched roof. Note the three-inch thick heavy entry doors adorned with prismatic leaded glass reproduced from the original designs -- recaptured during the building's restoration in 1999.

**8. Elks Temple No. 331 (1924), 419 Cedar**

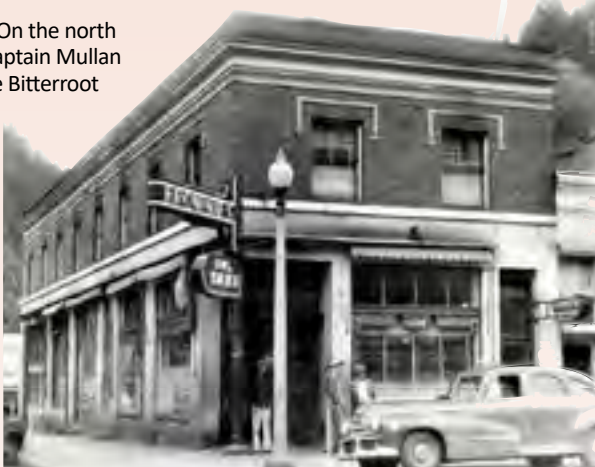
**9. Sears MacDonald Bldg. (1905), 500 Cedar St.** Built to be the Hope Hospital in 1905, this building later was the Morrow Retail Stores



An aptly named Bank Street, with First National Bank (#37) on the left and adjacent J.C. Penney Store (#27), now Oliver's Mercantile. Wallace Barnard-Stockbridge Museum image

headquarters for most of the 20th Century. First established in 1880, Morrow's was at one time in 17 north Idaho communities. The store carried everything from washing machines to groceries. It had quality clothing, cosmetics, shoes, jewelry, china and much more. It became the Brooks Hotel in 1992.

**10. Furst Bldg. (1900), 517 Cedar St.** Constructed by John G. Furst, a Norwegian who also operated a saloon in Gem.



Arment Building (#14 on the tour). Now the Silver Corner Bar & Lux Rooms Boutique Hotel. Wallace Barnard-Stockbridge Museum image

Over the years it has housed a soda fountain and ice cream bar, a dance floor and card room, as well as hotel suites.

**10A. Eagles Bldg. (1905), 515 Cedar.** Galbraith and Hall of Spokane designed the Eagles Lodge hall in 1905. The building employs local concrete block made of tailings from nearby mines and a small amount of silver and gold. Tailings were also used for constructing the county courthouse, homes and street paving. Now the Sierra Silver Mine Tour.

**11. Follett Bldg. (1898), 518 Cedar**

**12. Holohan-McKinlay Bldg. (1900), Cedar and 6th Sts.** Some documents refer to the building as the O'Neil-Samuels Building. The cut-corner entrance has a Corinthian-columned entry with a round arched pediment. The ground floor at one time housed five separate stores. For many years professional and business offices were on the second floor, referred to as Cozy Corners.

**Tour our historic homes & churches, too.**

A separate guide of Wallace's historic residential district is also available

# A Walk through History

Private residences occupied the third floor.

**13. Fuller Hotel later known as Wallace Hotel (1890), 525 Cedar St.** One of the first dozen masonry structures built after the 1890 fire, this is the oldest hotel building in Wallace. The eastside is out of plumb. One theory is that the mistake occurred in the rush to replace housing and commercial space after Wallace burned to the ground in 1890. The out-of-plumb mistake was noticed only after thousands of bricks had been laid. Instead of wasting time in starting over, builders continued

until the work was straightened. (This theory is based on a survey of a structural engineer's report). The Hotel housed the first bowling alley for both men and women. May Hutton of Hercules Mine fame ran a restaurant there during her early years in Wallace. Currently 6th & Cedar Coffee House.

**14. Arment Bldg. (1911), 601 Cedar** This structure was the third Arment Building on the same lot. The first was destroyed in the 1890 fire; the second was a frame building which was replaced by the present masonry structure. The second story, which retains its brick ornamentation and cornice, operated as a bordello from the 1920s into 1980s. Currently the Silver Corner Bar and Lux Rooms.

**15. Civic Bldg. (1933), 401 6th St.** The 1890 frame building occupied by Jesse Tabor was destroyed by fire in 1933, and replaced with a brick building. Designed by noted architect Gustav Pehrson, who also designed several

Spokane mansions and prominent buildings including the Spokane Chronicle. Currently Blackboard Marketplace

**16. Bi-Metallic Bldg. (1911), 605 Cedar St.** This two-story brick building was a saloon and hotel for most of its existence. Early maps showed a separate frame structure housing a bordello behind the

brick one. This business later moved above the saloon and operated until 1988. The second floor, now the Oasis Bordello Museum, remains virtually unchanged from the day the occupants departed, leaving everything intact since 1988.



Wallace Carnegie Library at River and 5th (#7 on the tour).

Wallace Barnard-Stockbridge Museum

**17. Ryan Hotel (1903), 608 Cedar.** Believed to be the longest continuously operated hotel in Wallace. Records show operation from 1903 to the present.

**18. Barnard Studio**

**(1907), 614 Cedar St.** T.N. Barnard came into this area from Wyoming and first took his photography studio to the gold fields in Murray. Barnard's assistant, Miss Nellie Stockbridge, practiced commercial and portrait photography at this address until her retirement in the late 1960s. The complete collection of Barnard and Stockbridge photographs are now stored at the University of Idaho, Special Collections in Moscow, Idaho. The entire digital catalogue is also available in Wallace at the new Barnard-Stockbridge Museum.

**19. Wallace City Hall & Fire Dept. 703 Cedar.** Built in 1924. Across the street is the former site of the Samuels Hotel (1906) Cedar and 7th Streets. This classic Victorian hotel was considered one of the finest in the Northwest when it opened. The Samuel's was razed in 1974 as too expensive to maintain. It was the only brick building ever razed in downtown Wallace.

**20. Gyde Taylor Bldg. 414 7th (1916)**

**21. Shoshone County Courthouse (1905), 700 Bank St.** Constructed with locally produced concrete blocks containing mine tailings. The blocks are naturally soft, so over the years the courthouse outer walls have been covered with a stucco material. This structure is a good example of neoclassical revival style. Designed

**Rossi Insurance**

Agents & Brokers  
Since 1895

• Property • Casualty  
• Life • Health • Agent

602 Bank St., Wallace, ID 83873  
Phone: (208) 752-1188  
Fax (208) 753-2931  
email: [rossicorp@usamedia.tv](mailto:rossicorp@usamedia.tv)

# A Walk through History

by Stritesky and Sweatt of Spokane, it stands three stories on a raised foundation. It is distinguished by the two-story arched windows about the central entry with its balustraded balcony supported by medallions. Other features include pilasters, denticulated

cornice and high parapet. Legendary attorney Clarence Darrow defended accused murderer Steve Adams in this building in 1906. The trial was part of the overall proceedings involving the alleged conspiracy to assassinate Idaho's former Gov. Frank Steunenberg in December 1905.

## 22. Hale Bldg(1925), 621 Bank St.

**23. Idaho Press Bldg. (1890), 622 Bank St.** This building begins what is believed to be the oldest block in the downtown district. It was originally a dry goods store. This is the borderline street for damages incurred by the great fires of 1910. This two-story brick building has a brick cornice, segmentally arched windows and a cast iron front. Currently the Idaho Press Gallery.

**24. Coeur d'Alene Hardware Bldg. (1890), 612-622 Bank St.** This building replaced the original wood frame structure owned by Holley, Mason, Marks and Company. It is designed to support six stories. The original appearance has been well preserved. The second story has segmentally arched windows with a brick cornice above. An addition was added to the east in 1896. A second Otterson Building was constructed in 1900. The three structures were used as a single building by Coeur d'Alene Hardware. It was both hardware outlet and main office for the foundry and manufacturing plant, which produced machinery that were shipped all over the U.S. and to several foreign countries. Currently the Pizza Factory, Sol & Serre Florist and Wallace Brewing.



Rice's Bakery (#43 on the tour).  
Now Wallace Mining Museum - where  
over 50,000 historical images  
are archived in hard copy  
and digital files.

**25. Heller Bldg (1898), 608 Bank St. (Currently the 1313 Club)** This two-story brick building has two storefronts joined internally on the first floor. The cast iron pilasters remain. The second story retains its segmentally arched win-

dows. The building has housed a hotel upstairs, a bus depot, a barbershop and a cafe since it was rebuilt in 1898. The 1313 Club completed the most recent renovation in 1998.

## 26. Stevens Bldg. (1906) 609 Bank St.

**27. Masonic Hall and Temple (1917), 605 Bank St.** This is a two-story brick building with terra cotta and granite trim. Designed by G.I. Hubbell of Spokane. It is distinguished by the extensive use of terra cotta on the second story and a round-arched entry with bracketed curved and denticulated cornice.

**28. Howes and King Bldg. (1890), 606 Bank St.** Original structure erected in 1884 by owners Henry E. Howes and Horace G. King, early Wallace merchants. These two men ran a grocery business and general store out of a log cabin at this site. Bricks were manufactured in Silverton at a local brickyard. Currently Idaho Silver.

**29. Manheim Bldg. (1890), 604 Bank St.** Erected soon after the 1890 fire. This two-story brick building has incurred many changes of the facade over the past century. In 1903, the doorway was in the center of the structure and a mortar and pestle adorned the sidewalk out front. During the great fires of 1910, the U.S.

Forest Service had an office upstairs. The space later became a pool hall and bar.

**30. Rossi Insurance Bldg. (1890), 602 Bank St.** This building was originally built for the Bank of Wallace. In 1892, the First National Bank of Wallace was created and occupied the site until 1916. The

# The Wallace Walking Tour

second story was added later with a pressed metal turret. This turret is a mimic of the one on the White and Bender Building across Sixth Street. The rear entrance features double doors with leaded glass, which are topped with a fan window pattern of elaborate leaded glass. Rossi Insurance is the oldest established business in the downtown historic district.

## 31. First National Bank Bldg. (1917), 419 6th St.

The second renaissance revival, white terra cotta structure features engaged doric columns, round arched imented entry, cornice and parapet. The building went through extensive restoration in the 1980s and received the Orchid Award from the Idaho Preservation Council in 1988. Built originally to house First National Bank of Wallace which was chartered in 1892.

**32. Idaho Bldg. (1917), 413 6th St.** The two-story red-brick building was constructed for Mrs. Otterson and O.D. "Deke" Jones. It is distinguished by its original mezzanine windows and the extensive terra cotta trim. The Idaho Building housed the Pennaluna Company from 1925 until 2015. Currently Past & Present Shoppe.

## 33. Gearon Bldg. (1927), 414 6th St.

**34. DeLashmutt/McAulay Bldg.(1890), 424 6th St.** The building was first a post office and county courthouse after the downtown district fires of 1890. The upper-story rooms were known as the "court rooms," providing boarding. Court proceedings were held here after the hijacking of the county records en route to Osburn from Murray until the present courthouse was built in 1906.

## 35. White and Bender Bldg. (1890), 524 Bank St.

One of the best Queen Anne commercial sites. White and Bender Co. expanded here from Murray in 1888. The company opened shop on the corner of Sixth and Bank while the fire of 1890 was still smoking — in a tented structure at first. White and Bender was a retail/wholesale mercantile well into the 1930s. The company then became a finance

company and a leader in public financing of appliances and automobiles. The building includes some original White and Bender shelving. White and Bender were the first to install electric lights in Wallace. It held the Stewart Wallace Drug and Selig Water Company. Currently Johnson's Gems.

## 36. Aulbach Bldg. (1891), 520 Bank St.

Built by owner Adam Aulbach, editor-in-chief of the Wallace Free Press, who came over the hill from Murray. He operated a print shop in the back with power from Printer's Creek. This creek is routed under the building, through Wallace, and drains into the

South Fork of the Coeur d'Alene River.

## 37. Finch Bldg. (Circa 1898), 516 Bank.

## 38. Herrington Hotel (1898), 512 Bank

**39. Elks Lodge Hall (circa 1905), 506 and 508 Bank St.** Designed by Priesse and Zittle of Spokane, this is the site of the first Elks Lodge in Wallace, instituted on Jan. 4, 1896. The new lodge was built on Cedar Street in 1924. Notice the elk hoof prints in the sidewalk outside the entrance to the former lodge.

**40. Wallace Post Office (1905), 500 block of Bank St.** A two-story brick building that is three bays wide. Although remodeled, it retains its second story window and a cast iron pilaster on the first story. Now North Idaho Trading Co.

**41. Shoshone Bldg (1916), 416 and 420 5th St.** The second story is distinguished by round arched windows with polychromatic tiles in its spandrels. A bracketed cornice caps the build-

ing, and it has a cast stone entry. The tiles were added later. First floor tenants include Dan's Tattoo Shop and Eureka Sally Gallery.

**42. North Idaho Telephone Co. (1908), 517 and 517 1/2 Bank.**

**43. Wallace District Mining Museum, 509 Bank St.** Today one of Idaho's leading museums, the building housed Rice's Bakery until the early 1970s.



The Jameson, #2 on the tour. Wallace Barnard-Stockbridge Museum archives

**The Oasis Bordello Museum**

**GUIDED TOURS**  
Open for the 2022 Season  
Hours variable by season

*The Oasis Bordello operated 1895-1988*

**208-753-0801**

605 Cedar Street Wallace Id oasisbordellomuseum@gmail.com

**Shoshone Medical Center**  
208.784.1221  
www.shoshonemedicalcenter.com

**SHOSHONE MEDICAL CENTER MAIN CAMPUS**  
24/7 Emergency Services  
35 Jackson Street, Wallace, ID  
208.784.1221

**SMC FAMILY MEDICINE**  
Same Day Appointments  
Open Monday - Friday  
358 Commerce Dr., Burley, ID  
208.784.4612

**SMC FITNESS CENTER**  
Public Room - Day Hours  
First Building North  
358 Commerce Dr., Burley, ID  
208.784.4612

# The Darrington effect:



COEUR D'ALENE RIVER AT CATALDO

Seeing North Idaho through the eyes of late photographer John Darrington, the photo artist who crafted these images and many others. A seasoned hard rock miner, John possessed the toughness and strength common among those who work miles underground. He also had a gentle spirit and unmatched knack for capturing the beauty around him. A humble man, he most likely would have been embarrassed by this tribute. *Thanks for these images John, and rest in peace --Editor.*



HIDDEN FALLS



HUB LAKE

## "A Comfy Cottage" - Vacation Rental



**IN THE HEART OF HISTORIC WALLACE**  
Clean - Comfortable - Affordable

An easy walk to Downtown shops, museums, pubs, zipline tours and other attractions; a block to the bike trail; 15-minute drive to 2 ski areas.

*"...cozy, beautiful, and immaculately clean."*

The Sandovals, Whittier CA

[acomfycottage.com](http://acomfycottage.com)  
[acomfycottage@gmail.com](mailto:acomfycottage@gmail.com)  
208.699.7554

## Unique Boutique Hotel Experience

RYAN  
HOTEL

Since 1903

14 Historic Rooms  
(11 with private bathrooms)  
Starter Breakfast  
High Speed Wi-Fi  
Bike Storage  
New Event Center  
"Scene on Cedar"

Downtown  
**Wallace**  
608 1/2  
Cedar St.

**HotelRyan.com**  
**208-753-6001**

Book Online & Save with PromoCode Chamber2021



**MOSSY MOOSE**  
Gifts & Gallery  
Est. 1984

108 8TH ST. WALLACE, ID  
Family owned local giftshop with  
a clothing boutique & game  
rental department.



**Yard game rentals!**  
RESERVE YOUR INDOOR/OUTDOOR  
ENTERTAINMENT PACKAGE TODAY!



CLOTHING • BOUTIQUE • INSIDE

**LOOK  
DAPPER  
WHILE  
YOU  
WALLACE**  
Premium Quality Goods

*Facebook!*  
*mossymoosewallace*

YOU'LL FIND EVERYTHING FROM  
LOCAL & HANDMADE GIFTS TO  
UNIQUE SOUVENIRS & HOME  
DECOR.



**Great  
Beer**



**Great  
Food**



**Great  
Stay**



**NORTH IDAHO  
MOUNTAIN BREW**  
EST. 2008

208-753-7121 • [wallacervpark.com](http://wallacervpark.com)  
Full RV Sites • Tent Sites • Dry Cabins  
Restrooms and Showers

**All in one GREAT Place**

Please visit our website to learn more [citylimitsbrewpub.com](http://citylimitsbrewpub.com)

**208-556-1885 • 108 Nine Mile Road • Wallace, Idaho**