

2023-24



WALLACE
HISTORIC • IDAHO



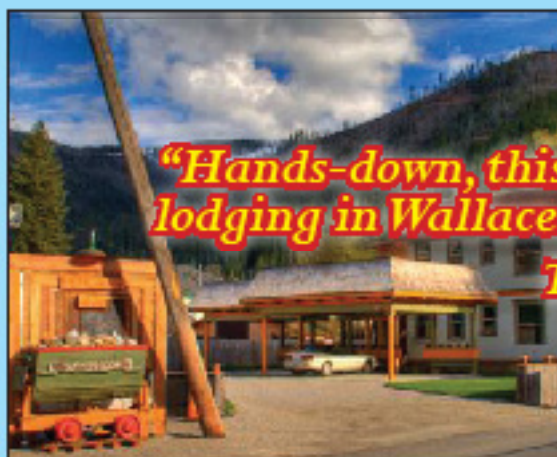
VISITOR'S GUIDE

CENTER OF THE UNIVERSE

**STAY
FOR THE
ADVENTURE**

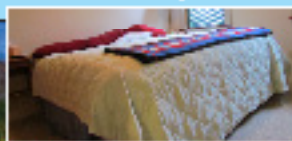
HERCULES INN

Overnight or Extended Stay



"Hands-down, this is the best lodging in Wallace..."

Tripadvisor.com



Luxurious Suites Unbeatable Rates

- FLAT SCREEN TVs
- KING & QUEEN BEDS
- LAZY BOYS
- FULLY SIZED AND STOCKED KITCHENS
- COIN OP LAUNDRY
- JACUZZI HOT TUB
- COVERED, LIGHTED PARKING



Each of our four suites sleeps up to four guests

**Within walking distance to town,
the Hercules Inn is located on
Front and 2nd St., and just two
blocks from exit 61 off I-90.**

For reservations and registration contact:

www.redlightgarage.com

**THE BEST DEAL
INTOWN!**

**509-435-3005
509-991-2005**



Downtown Wallace at the Center of the Universe. **CENTER BELOW:** Wallace one of America's most historic cities. Wallace Huckle Berry Festival **IMAGE CREDITS:** NBC TODAY SHOW, MIKE FEILER. **COVER PHOTO:** PINE STREET & TROLLEY IN THE FALL, LIZZIE KEITEL

Wallace offers a storybook like travel experience. It's entirely listed on the National Register of Historic Places, nestled among tumbling mountain streams, deep wooded canyons and abundant wildlife...

A storied place, Wallace

...its place in the heart of one of the world's richest silver districts, 1.3 billion ounces mined and counting, is a big reason it's a national landmark.

Visitors today will find four museums, underground mine tours, live theater, a host of dining, lodging and imbibing options, two microbreweries and unique shops --- and that's just the indoors.

Outdoors are a whole other story. Wallace is home base to Idaho's only Hall of Fame Rails to Trails cycling routes, a new mountain bike park, two ski resorts within 15 minutes, a 1,000 plus miles of ATV and groomed snowmachine trails, ziplines, great fishing, camping, big game hunting



and world class hiking trails.

Plus there are special events and festivals all year long. And the Probable Center of the Universe.

Add in a reputation for hospitality and that it's a host city for many conventions and

gatherings, and it's no wonder Wallace has been named a top destination by

The NBC Today Show, The Travel Channel, Reader's Digest, True West, USA Today, MSN, Northwest Travel, Huffington Post, Budget Travel and others.

Come see for yourself. Turn the page, visit us at Wallaceld.fun, and on Facebook and Instagram.

Best yet, visit in person. Find Wallace just off I-90 at exits #61 & #62.





The Crown Jewel of America’s Rail Trails, the Hiawatha features Ten tunnels and seven trestles - some over 230 feet above the ground. IMAGE CREDITS VISIT IDAHO

‘Bucket list’ beautiful

“Breath-taking”. “Bucket-list worthy”. “Crown-Jewel of Rail-Trails.”

Are just a few of the reviews given to the Route of the Hiawatha Rail Trail. Wending its way through 15 miles of dense forest, tumbling waterfalls, towering train trestles and cool mountain train tunnels, the Route of the Hiawatha is one of the most popular cycling attractions in Northwest.

The route rolls over the abandoned Milwaukee Railroad grade between the old town site of Taft and the North Fork of the St. Joe River near Avery.

Designed for all ages and experience levels, it boasts a rider-friendly, all-downhill 1.6 percent average grade -- gently dropping 1,000 feet from start to finish.

For the best experience don’t rush this ride. Take the time to savor the scenery, read the

nearly 50 interpretive signs and kiosks, and keep on the lookout for moose, elk, deer and other wildlife.

Shuttle buses are available to transport bikes and bikers back to the top.

Over 70,000 riders took the trail in 2020, prompting trail concessionaire Lookout Pass to institute a reservation system for the popular weekend tours.

Start your Hiawatha adventure at Lookout Pass Ski Area. It’s located at exit #0 on I-90 at the Idaho/Montana line, 12 miles east of Wallace. Once there you

can get trail passes, shuttle tickets, mountain bike rentals, souvenirs, and sack lunches.

The Route of the Hiawatha is open daily from late May to late September, from 8:30 a.m. to 5:30 p.m. Pacific Time.

For more info and/or reservations visit ridethehiawatha.com, or call (208) 744-1234

INSIDE

World Class Trails	4-8
Museums & Underground Tours	10-13
Zip, bike & hike	14-16
Lodging & Dining Guides	17-23
Where am I? Area map	24-25
Ski, Fish, Hunt, Kayak	26-27
On stage, screen, print & TV	28-31
Center of the Universe	33
Events Calendar	36-37
Shopping Guide	38-39
Blooms & Pools	40-41
Bring your group here	42
Old Mission & Ghosts	43
Colorful Past & Present	44-45
Walking Tour	46-54
A last look	56



- PET FRIENDLY
- LOCATED DOWNTOWN
- RENOVATED ROOMS

BOOK NOW

208-752-1213
WWW.STARDUSTWALLACE.COM

 @STARDUSTWALLACE

15% OFF

CODE: VISITOR15
*BASED ON AVAILABILITY



HISTORIC WALLACE

Blues Festival

JULY 7-8 2023

<u>FRIDAY</u>	<u>SATURDAY</u>
6:00pm EVENT OPEN	☆ CJ Chenier and The Red Hot Louisiana Band
7:00pm WALLACE	☆ The Hank
IS THE	Shreve Band
☆ STAGE ☆	☆ Dogs With No FUR featuring John Kelley
16 VENUES+	☆ Stephanie Anne Johnson
18 ACTS+	☆ C.D. Woodbury Trio with
+JULY 6 & 9	☆ David Champion
BONUS	☆ Casey Ryan
EVENTS	☆ Devon Dean Riley

Blues Festival 2024

JULY 11-14

WALLACEBLUES.COM



Hall of fame ride

On the 73 Mile Trail of the Coeur d'Alenes

There are nearly 2,000 rail trails in America.

Just 15 -- less than 1% -- are Hall of Fame Trails as distinguished by the Rails to Trails Conservancy.

Two of those select trails are in Idaho. Both are on Wallace's doorstep: The Route of the Hiawatha on the previous page, and the Trail of the Coeur d'Alenes, featured here.

The Trail CdA's spans 70 plus miles of well-maintained asphalt beside rivers, lakes and small towns of the Idaho Panhandle.

Start the trail on either end in Mullan or Plummer, or pick it up anywhere in between.

In Wallace the trail runs the length of the town all along the South Fork of the Coeur d'Alene River.

It has a gentle grade and smooth surface---- along with 20 developed trail-heads and 17 scenic waysides with picnic tables and benches.

Plus there's three dozen bridges and trestles that a body can stop and watch rushing streams or view tranquil lakes and wetlands.



IMAGE CREDITS: VISIT IDAHO



Wildlife is abundant. Moose, deer, elk, black bear, bald eagles, osprey, herons, otters, beavers and waterfowl make the adjacent river, lake, forest and marshland their home.

The trail also accesses several points of interest including the Wallace's Northern Pacific Railroad Depot and the Cataldo Mission.

Now it's easier than ever to enjoy the trail -- with shuttle service available via the Wallace Inn and electric bike rentals through Wallace's Spokehouse.

For more info including detailed maps: CdA Tribe Trail Manager (208) 686-7045, State Trail Manager (208) 682-3814 or visit online at parksandrecreation.idaho.gov and friendsofcdatrails.org. Maps also at Wallace Visitor Center, Depot and Mining museums, Wallace Inn, Cataldo Mission (the trail HQ) and in Kellogg and Harrison.

"A Comfy Cottage" - Vacation Rental



IN THE HEART OF HISTORIC WALLACE
Clean - Comfortable - Affordable

An easy walk to Downtown shops, museums, pubs, zipline tours and other attractions; a block to the bike trail; 15 minute drive to 2 ski areas.

"A cozy, beautiful, and immaculately clean."

The Sandovsk, Whittier, CA

BOOKING@COMFYCOTTAGE.COM
acomfy.cottage@gmail.com
208.699.7554



www.bikewallace.com
208-610-1584

425 Pine Street, Wallace Idaho
(across from the Stardust Motel)

**Join us at The Adventure Hub to gather information, relax, share stories
and enjoy a refreshment in our open and relaxed atmosphere.**

Full Service Bike Shop

Bike Rentals

The best bikes and even better rates!

**Bicycle Tours and Shuttles: Route of the
Hiawatha, Trail of the Coeur d'Alene and
more!**



Our Sister Companies:



Follow Pulaski's Trail

Lush forest, gurgling Placer Creek and breath-taking waterfalls now cover what was once a hellish moonscape from the largest wild fire in U.S. History. This four mile round trip hike with interpretative signage commemorates the heroism of firefighters who risked their lives saving Wallace from incineration.

The trail honors Ranger Ed Pulaski, who saved his crew of 45 men by shepherding them to safety. More exhibits and memorials on the trail and fire can be found in Wallace at the Mine museum, Visitor Center and Nine Mile Cemetery.

Featured on *the Travel Channel*, in the *NY Times* bestseller *the Big Burn* and PBS' *American Experience*, the trailhead is located one mile south of Wallace on St. Rte 456.

Road signs in Wallace guide visitors to the trail. Please note: the way to the trail passes through residential areas, so please

obey speed limits and watch for pets and pedestrians. IMAGE CREDITS: MIKE FEILER, WALLACE BARNARD-STOCKBRIDGE MUSEUM, JOHN DARRINGTON



Top: Ranger Ed Pulaski. Center: Trail interpretative sign. Bottom: Placer Creek along the trail.

Road to Riches, Burke Canyon

Burke, Gem, Frisco, Black Bear, Yellow Dog—all legendary names of towns filled with stories of Bonanza and Bust and all a short drive up Burke Canyon Road at Exit 62 off I-90 at Wallace (Idaho State Rte 4). See map pp 24-25. On your way up the canyon see the massive ruins of the Frisco Mill, blown apart by striking workers in the 1890s mining war, as well as those

still inhabited mining towns alongside river and within a couple of miles of each other. Spectacular scenery and views along with frequent sightings of deer and Elk abound the whole seven mile drive to the once bustling town of Burke. Set in canyon so narrow that the mines, mills, rail, road and even a hotel had to share the same thoroughfare. That hotel, the Tiger, made



Electric Bike Rentals

Rent a **FUN e-bike** to explore historic towns & mountain roads, the *Route of the Hiawatha* & *Trail of the Coeur D'Alenes*.

Book Online at
www.theSpokehouse.com

Wallace Spokehouse
208-699-6882
519 Bank St. | Wallace, ID



JOHNSON'S GEMS
Minerals & Rare Collectibles

Since 1921 *Ryffman's* *Men's Wear*

Two Locations:
418 6th St.
611 Cedar St.
(208) 556-0983

JOHNSON'S GEMS
Center of the Universe

On Site Jeweler
To cut and polish your finest gems and stones and clean your jewelry while you shop

MUST-SEE GALAXY ROOM
WORLD CLASS ROCKS & GEMS FROM AROUND THE WORLD
IDAHO SILVER
SPORTS CARDS - MEMORABILIA - RECORDS - TOYS - CRYSTALS - JEWELRY - GEMS - FOSSILS

History lives in Wallace

For the history fan, Wallace boasts a treasure trove of attractions. The entire city is listed on the National Register of Historic Places, and nearly every home and building has a storied past. So much so Wallace

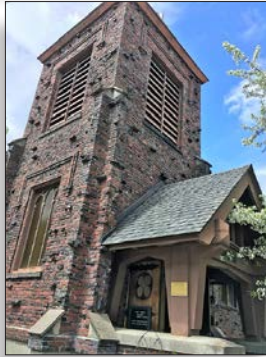


Wallace offers self guided walking tours of its 1890s era residential and commercial districts. Pedestrians can stroll at their leisure and learn the

“Among the most historic towns in the West.”

True West Magazine

was honored by True West Magazine as one of the top ten historic towns in the West.



fascinating heritage of the town and its landmarks.

The first weekend of October the town celebrates that heritage with a history festival featuring guided tours of historic homes, re-enactments, free lectures and workshops.

Top: historic Tabor & Hutton homes on Pine Street. *Paige Taylor Evans image.* *Below:* Holy Trinity Church, now the Barnard Stockbridge Museum on 4th and Cedar. *Wallace Chamber*

A quiet treasure: Wallace cemetery

Nine Mile Cemetery lies adjacent to the Sierra Silver Mine one mile north of town on Dobson Pass road (Rt 456). Among steep hills and forest is this solemn city of the dead, with internees from the town's beginnings in 1884 to the present.

Sections for different religions

and occupations as well as monuments to the firefighters who died in the great blaze of 1910.

To get there follow Sixth St. north past the Depot. Proceed under I-90.

Look for the green 1 mile marker on the right. The cemetery is on the left.

North ID Unique Creations
621 Cedar St, Wallace, ID 83873
(208)709-8563
Mon.~ Sat. 10am to 6pm
Sundays 11am - 4pm

Featuring Silver Valley Artists

Offering Unique and Local gifts, hand-crafted by North Idaho artists



Your must-see them:

Wallace museums

The Northern Pacific Railroad Depot Museum

is a great place to start your Wallace history tour. The beautifully restored 1901 built chateau style railroad depot and grounds tell the town's rich heritage through a series of interactive exhibits--all done with attention to style and accuracy.

Find unique treasures in their gift shop and attend the museum's multiple special events year-round. Open April 15-October 15. (208)752-0111 219 Sixth St. npdepot.org.

The Wallace District Mining Museum is

another must stop for any history buff. Featured twice on the Travel Channel's *Mysteries at the Museum*, the acclaimed museum tells the story of the richest Silver District on Earth. (And yes, we

are still mining here).

Over \$7 billion in mineral wealth have fueled an even richer history of

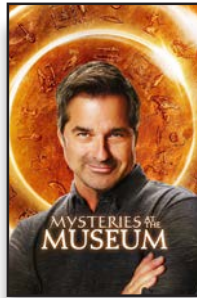
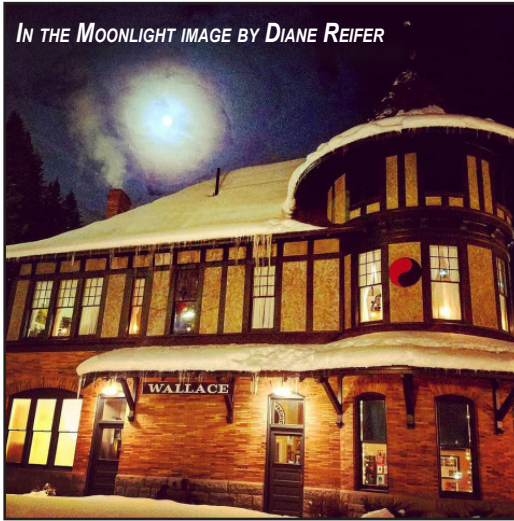
fortunes made and lost, labor strife, assassination of an Idaho Governor and visits from sitting U.S. Presidents. Exhibits on the Great Fire of 1910, a Smithsonian quality life sized mock mine, theater, Dante's Peak film exhibits, as well as an

extensive digital research archive have led the museum to be named one of Idaho's finest educational and research institutions.

New this year are exhibits on Buffalo Soldiers units' contributions in North Idaho as well as a new online store.

The museum's gift shop boasts souvenirs, a large collection of histories as well as silver coins and bullion.

(208) 556-1592 509 Bank St.



Go underground:

Now in its 41st year, the Sierra Silver Mine Tour is one of Idaho's most popular attractions. Take a one hour 15 minute tour via trolley or their new jitney around Wallace and up to the Sierra Silver mine located one mile north of town.



Go underground to this former working silver mine with retired miners as your guide. Inside the tour's expansive Cedar Street ticket office, waiting area and gift shop, discover artifacts and souvenirs galore. Old Fashioned Ice Cream Parlor and gold panning, too. Open May-Oct. 509 Cedar (208)752-5151 silverminetour.org

VISIT IDAHO IMAGES

Gold panning at Eagle City Park

Pan for it. Experience gold mining like the early prospectors did here: pan for gold in N. Idaho's gold fields.


Eagle City Park and Campground offers river front gold panning over 35 acres in the same rich placer fields discovered in the 1880s gold rush.

And, you keep all the gold you find!

Nestled between the old mining camps of Murray and Prichard and short drive from Wallace or Kingston. Open seasonally. 208 699-8128.

Online at GoldFeverMiningSupply.com





IDAHO SILVER
SHOP

"Your Silver Specialty Store"

Local Artist Designs
Idaho Garnet & Star Garnets
Idaho Opal & Star Opals
Large Selection of Sterling
chains, charms & earrings
Gift Ideas & More

Receive a Free Sterling
Silver bracelet with
\$30 purchase
(limit one coupon per sale)

606 Bank St, Wallace
(208) 556-1171

Haunting images

The people and places that populated Wallace's historic past aren't gone.

Like spirits inhabiting former homes, those old residents and buildings now reside in large format, high resolution prints and the extensive digital archives of Wallace's Barnard-Stockbridge Photo Museum.

Housed in the once shuttered National Register of Historic Places Holy Trinity Episcopal Church building, the museum showcases the Barnard Stockbridge Photo Collection -- an extraordinary cultural and historic resource.

New Wallace sex workers' exhibit



Wallace Madame Babe Kelly and child, part of a new exhibit debuting at the museum this year, "the Ladies Upstairs, Downstairs." Photographer Nellie Stockbridge's images capture both the grittiness of sex workers' lives and their essential, often overlooked humanity.

Thousands of images paint the fascinating story of life in the Coeur d'Alene Mining District from the 1880s to 1963, the time the Barnard-Stockbridge studio operated in Wallace.

The building space itself is a sight to see, designed by renowned Northwest architect Kirtland Cutter.

Open April thru October, find the museum at 312 Fourth Street, across from the

Post Office, at BarnardStockbridge.com and on Facebook and Instagram.

Your Full Service Supermarket:



New
Pharmacy
Now Open
9am-6pm M-F

Fresh Produce, Fresh Meats with NW Premium
Angus Beef, Fried Chicken, Full Service Deli,
Donuts, Ice, Snacks, Red Box Movie Rentals

Locally Owned & Operated
Open 7am-9pm, Daily



**Harvest
Foods**

• Wallace's Only Liquor Store
• Wide selection of beer & micro brews
• Full selection of HUCKLEBERRY products

800 Bank Street, Wallace 208-752-1233

Fly high at Silver Streak

“Rush” is an understatement for the six story drop on the Dragon’s Breath Zipline, one of ten lines featured by Wallace Silver Streak Ziplines.

The lines range from one to six football fields long, allowing speeds up to 60 mph. (Or slower for the less wild at heart).

The zipline offers 10 different courses. Each has “dual zips,” allowing the option of flying in the prone or “superhero” position. It’s fun for the entire family.

Just getting up the mountain is an experience in itself, with breathtaking views of the Bitterroot Range and surrounding wilderness.

Look for new major improvements to the attraction -- widened roads, a



professionally designed mountain bike park and trails as well as a snowboard park for winter. The zipline’s office and welcome center is conveniently located in downtown Wallace at 5th & Cedar Streets. Reservations are recommended; call (208) 556-1690. Check their websites for more information: ZipWallace.com, SVRGAS.com

SILVER STREAK, SVR GAS PHOTOS



Daily Scenic Gondola Rides



Idaho's largest indoor waterpark

Lodging Packages Available

Tubing
5 lanes of fun!



SILVER
Mountain Resort

208.783.1111

silvermt.com

Play, learn and recharge

The Mining Heritage Exhibition stretches over four acres of park and river front adjacent to the grounds of the Wallace Visitor Center (I-90 Exit 61).

The free, outdoor, family friendly museum depicts the evolution of local mining through numerous hands on exhibits and new interpretative signs, inviting those of all ages to learn what it takes to wrest mineral riches from miles below the surface.

Plus 24/7 year-round restrooms, numerous picnic tables along with water and electric outlets and large parking area make the exhibition, park and Visitor Center the perfect place to rest, refresh and recharge from any road trip or visit.



Wallace's free, hands on four acre outdoor mining exhibit educates and entertains all ages, year round

LIZZIE KETTEL IMAGES

Historic Home

with Modern Amenities

IN HISTORIC WALLACE, IDAHO



- SLEEPS 12
- 2 FULL BATHS
- LARGE DINING ROOM
- SPACIOUS KITCHEN
- PETS WELCOME
- BICYCLES AVAILABLE
- GAS BBQ
- SHUFFLEBOARD
- CD JUKEBOX
- VIDEO GAMES
- DEDICATED KIDS AREA

Close to Ski Resorts

ENJOY YEAR-ROUND!

"The Tabor House is simply awesome. The layout, the rooms, the exceptionally well-stocked kitchen, the games (shuffleboard, air hockey, board games, Wii, etc.) the music collection, the dvds's... You get the picture"

Richard Washington

The Tabor House

All Season Vacation Rental

MAKE YOUR RESERVATION TODAY:

1-208-682-0797

laborhousevacationrental.com

Step into the city woods

The easiest way to be in the midst of forest surrounding Wallace: climb our extensive, scenic stair system.

Wend your way up the steep south hills through both deciduous and pine woods, where sightings of wildlife like moose, deer and elk are not uncommon.

Find restored stairs at every numbered street from Third through Seventh. At over 800 steps, (the equivalent of 46 story building), the stairs first enabled city folk an easy route to hillside homes. Restoration of the system began in 2011 and is nearly complete today. Most stairways are 100 feet long and have 76 to 84 steps, including those with landings and benches. New maps at the Visitor Center, Mine Museum or Railroad Museums. Interpretive signs are also at the Fifth and Bank staircase



On your markets, ready, set, GO!

How can you tell it's summer in the parts? Follow the bargain hunters. One of the region's largest flea markets bookends the sunny season, with a third one smack in the middle. St. Ignace, Montana starts things off every Memorial Day Weekend with Montana's first outdoor market. Then come July weekend visit the new West Wall-Flea Market a quarter mile west of town's Visitor Center. Finally Labor Weekend, see 100s of vendors underneath the freeway on city streets at the depot grounds. Kids games, live music, loads of fun and best of all: killer bargains on stuff you didn't even know you needed.

2022-2023
OUR 40TH YEAR

SIXTH STREET
MELODRAMA
& THEATER

PROUDLY PRESENTS

Live Theater!

Summer Melodramas
Wednesdays through
Saturdays, 7 p.m. Sundays, 2 p.m.

All summer tickets: \$10
Other productions in
November, December
and March

212 Sixth Street
Wallace, ID. 83873
208 752-8871 877-SIXTHST

To purchase tickets online and
see production schedules, visit
sixthstreetmelodrama.com

Under the Freeway
Flea Market
ALWAYS Labor Day Weekend
Good Buys & Special Deals

Non-Profit organizations are offered
FREE booth space and
Vendor & Volunteer Information:
Northern Pacific Depot Museum
208-752-0111
npdepot@gmail.com

SLEEPS

All phone numbers
208 prefix unless
otherwise noted

HOTELS & MOTELS

BROOKS HOTEL

500 Cedar St., Wallace 556-1571

HERCULES INN

Front & 2nd St., Wallace (509)435-3005

FAIRBRIDGE INN & SUITES

601 Bunker Hill Ave., Kellogg 783-1234

LUX ROOMS

601½ Cedar St., Wallace (206) 909-7472

RYAN HOTEL

608 1/2 Cedar St. Wallace 753-6001

SILVERTON MOUNTAIN MANOR

99 Satherfield Rd, Silverton 6605928
(silvertonmountainmanor.com)

SILVER MOUNTAIN RESORT/LODGE

610 Bunker Hill Kellogg (866)345-2675

STARDUST MOTEL

410 Pine St., Wallace 752-1213

WALLACE INN

100 Front St., Wallace 752-1252

RV PARKS/CAMPGROUNDS

WALLACE RV PARK

108 Nine Mile Rd., Wallace 753-7121

BY THE WAY CAMPGROUND

907 N. Division Pinehurst 682-3311

CRYSTAL GOLD MINE RV PARK

51931 Silver Valley Rd. Kellogg 783-4653

MULLAN TRAIL 725 River St. 744-1444

VACATION RENTALS/AIRBNB

A COMFY COTTAGE

207 Pine St., Wallace 699-7554

By the Way Suites

801 N Division, Pinehurst (208)682-3311

THE CEDAR HAUS

317 Cedar., Wallace (520) 241-2807

THE CHURCH HOUSE

DiscoverWallace.com/churchhouse

CUTE ON KING

125 King St (208) 508-2262

DAHO BUILDING

415 6th St. (IdahoBuilding.com)

LUX ROOMS

6th & Cedar Wallace (206)909-7472

MANOAH 611

608 Bank St (611apartments.webstarts.com)

ONA'S HOUSE

319 Pine St., Wallace 784-8925

SIRI CHRISTINA BED & BREAKFAST

202 River St.(208)398-4407

THE GREAT CATSBY

DiscoverWallace.com/Catsby

THE TABOR HOUSE (Wallace) taborhousevacationrental.com 682-0797

THREE KINGS OF WALLACE Book at VRBO.com

VISIT OUR "STAY" PAGE AT WALLACEID.FUN FOR MORE DETAILS ON THESE & OTHER LODGING OPTIONS

The Siri Christina BED & BREAKFAST

Luxurious, Turn of the Century
Romantic Suites

Warm hospitality
Exceptional accomadations

Jacuzzi tubs, wireless internet,
other amenities

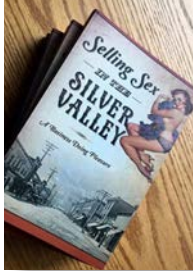
Traditional breakfast service



202 RIVER ST, WALLACE (208) 398-4407

A history of seduction

The compelling story of Wallace's long running Red Light District is retold today at the Oasis Bordello Museum (reopened this year after a two year hiatus) and the focus of a new photography exhibit at Wallace's Barnard-Stockbridge Museum. That history is also a best-selling book and documentary. Based on the 2017 treatment by local PhD Heather Branstetter, the short film *Wallace* -- like the Branstetter book -- gets rave reviews for its no-nonsense portrayal of



the industry and town. *Wallace* was featured at Sun Valley and Aspen film festivals.

Want more of a old time Wallace experience -- how about sleeping in

an old bordello? On the corner of 6th and Cedar Streets are the recently renovated Lux Rooms, now a boutique hotel. The hotel has several packages available along with sister property the Silver Corner Bar. **Reservations: (206)909-7472 [airbnb.com](https://www.airbnb.com)**

A Gold Mine of family fun

Just nine miles west of Wallace lies the Crystal Gold Mine & RV Park. Prospectors first discovered a gold bearing vein there

in 1879 and mined it for three years before abandoning the site.

The mine was lost for over a

hundred years. In 1991, the then owner saw water seeping out of the hillside. Hoping it was a spring, he dug into the bank and partially uncovered the portal. In 1996 the site was rejuvenated as a tourist attraction. Visitors will see the smithsonian crystals that have formed on the walls, and quartz veins with gold and silver. Gold Panning included with tours during summer months.



NEOCHACHOS TACOS

Open Friday & Saturday 11:30-8pm
Special hours on weekdays
208.661.2062
517 1/2 Bank St. Wallace
FRESH & DELICIOUS, ALWAYS FRIENDLY



SHOP THE WORLD'S LARGEST RAM DEALER

800.635.8000 • DAVESMITH.COM
210 N. DIVISION ST KELLOGG, ID



Please note: hours & menus can change with season. Please visit our website, Wallaced.fun for the latest info.

1313 CLUB 608 Bank Street
Breakfast, Lunch and Dinner
208.752.9391

BLACKBOARD CAFÉ/TODD'S
600 Cedar Street 208.556.5648
Daily Lunch & Dinner Dine-In
Fresh Baked Pasteries & Deli

BROOKS RESTAURANT & LOUNGE
500 Cedar St. 208.752.8171
Breakfast & Dinner Fri-Sat

CITY LIMITS BREW PUB
108 Nine Mile Road
Home of North Idaho Brewery
Lunch & Dinner 208.556.1885

COGS GASTROPUB
424 Sixth St.. 208.682.6220
Lunch & Dinner 11am to 10pm

THE FAINTING GOAT
516 Bank St. Lunch & Dinner
(208) 512-9010

FOWL MOUTHS
5th & Cedar Sts. Wallace
Wings, Sweet Tea & Fries 556-1690

EATS

HARVEST FOODS

800 Bank St. 208.752.1233
On the Go Full Service Deli & Bakery

METALS BAR

514 Cedar Wallace
Appetizers, Pizza more 208.556.5213

MUCHACHOS TACOS

517 1/2 Bank
Lunch & Dinner 208 661-2062

RED LIGHT GARAGE

302 5th Street 208.556.0575
Breakfast, Lunch and Dinner

6TH & CEDAR

Sixth & Cedar Sts. *In the Wallace Corner*
Coffees & treats

SIERRA SILVER MINE TOUR

509 Cedar Street Wallace 208.752-5151
Old Fashioned Ice Cream Parlor

TRAILSIDE CAFÉ @ WALLACE INN

Breakfast, Lunch and Banquets (all year).
Dinner (May-Oct) 208.752.1252

THE TIN SNUG

619 Bank St. 8am-4pm, (208) 784-3642,
Breakfast & Lunch

A feast of dining choices,

Looking for a place to eat? Wallace doesn't disappoint. The little town at the Center of the Universe offers a raft of choices, not one of them a national chain. Here's a rundown of your options in Wallace and nearby towns:

AT CITY LIMITS BREW PUB, brew masters put out some of the region's finest local beers matched with a varied lunch and dinner menu. Plus brewery tours, a full bar and more. A popular spot post ski, bike or snowmachine ride. Located 100 feet from the Hall of Fame Trail of the Coeur d'Alenes at 108 Nine Mile Road. 208.556.1885 citylimitsbrewpub.com.

Look for the space ship. It's parked in the lot at **THE RED LIGHT GARAGE** on Fifth and Pine Streets. A must stop for youngsters or just

A UNIQUE AND VAST WINE TASTING EXPERIENCE AT THE FAINTING GOAT



HUCKLEBERRY SHAKES WITH A DOSE OF WHIMSY AT RED LIGHT GARAGE



the young at heart, their walls, halls, and ceiling are bedecked with every kind of road sign from across the Pacific Northwest, along with campaign memorabilia, musical instruments license plates from every American state.

Best known for their Huckleberry Shakes, but enjoy classic burgers, a full breakfast menu and fully stocked bar. Open for breakfast, lunch and dinner. 208.556.0575

THE BLACKBOARD CAFE & MARKETPLACE offer a one-two punch for both sit down and on-the-go

SUDS & SEAFOOD DELIGHTS AT CITY LIMITS BREW PUB



meals. The cafe features gourmet sandwiches, soup and salad for lunch and classic Italian dinner in the evenings. The market offers deli fair, espresso and fresh baked goods. The Cafe is open from 11 am - 3 pm, lunch. Dinner runs from 5-8pm. Market is open 8am-9pm. Weekend breakfasts. 600 Cedar St. 208-556-5648. blackboardmarketplace.com

COG's has earned a loyal following for its filling take on pub food. Chef Nick creates mouth-watering dining and grab & go offerings with gorgeous views



A full menu served in an elegant historic building featuring fire-oven pizzas, unsurpassed wine selections, & tap rooms

(208) 512-9010
516 Bank St.

Open 11-8pm
Closed Wed.

all local and no chains

of mountain and city scape. Plus a varied selection of craft brews on tap, full bar and the ambience of an 1890 built building that has served as a cigar shop & court house. Open daily 11am-10pm at *Sixth & Bank*, the *Center of the Universe*. cogs@discoverwallace.com 208.682.6220

THE FAINTING

GOAT is an elegant yet casual dining experience. Exquisite entrée and appetizer selections offered in an intimate, welcoming setting makes for a great dining experience not out of place in any major metropolitan setting anywhere. New this year, their brick pizza oven. Open for lunch and dinner year-round. (Closed Wednesdays). 208) 512-9010, 516 Bank St. thefaintinggoatawinebar.com

FOWL MOUTHS boasts Wings, Sweet Tea and Fries. That's it and that's enough. Owner Scott Haney brings a bit of his native Texas to the

CENTER OF THE UNIVERSE VIEWS & BREWS FROM COGS



608 Bank St. 208.752.9391
1313club.com

MUCHACHOS TACOS is one of the latest additions to the downtown. From the management of Coeur D'Alene's Tony's on the Lake, owner Traci Arcireno brings authentic Mexican cuisine, with fresh ingredients, gourmet spices, personalized service in a fun upbeat setting. 517 ½ Bank 208 661-2062.

Just east of town is a can't miss experience. **THE OUTLAW'S** legendary hamburgers can satisfy the most demanding of appetites. Full menu, beer and liquor menu as well. Take exit #68 in Mullan, hit the down-

town and there they are at 209 Hunter. 208 744-1120. Open till 10pm daily, midnight on weekends.

Wallace is also home to two restaurants in hotels. A popular locals' spot, **THE BROOKS HOTEL** offers the classic diner experience in newly renovated dining room and kitchen. A dozen tables, friendly personable staff and complete breakfast and lunch menu. Salad & soup bar, too. Open seven days on the corner of Cedar and Fifth Streets. 208.556.1517.

Just off Interstate 90 at exit 61, **THE TRAIL-SIDE CAFE AT THE WALLACE INN** is the town's most accessible restaurant from the interstate. The Café caters to the traveler and business person with a modern restaurant. Feast your eyes on the menu or views of mountain, forest or river scape. Open seven days 100 Front St. 208.752.1252 thewallaceinn.com.

And may we suggest **THE METALS**? It's Wallace's oldest watering hole.

If you're in the mood for a late, late night meal, they are the place to go: a complete appetizer menu—ranging from cheese sticks, pizza, chicken strips and more. Located at 514 Cedar 208 752-5213.

Sometimes a body just needs a quick bite. A solution: hit the Deli's at our local grocers.

In Wallace that's **HARVEST FOODS**. It's at 800 Bank Street on the east end of town. Burgers, finger steaks, sandwiches and specials of the day all prepped that day in their in store bakery and deli. Give them a call ahead of time at 208 752-1233.



downtown. In the old bank building at Fifth & Cedar in Wallace. It shares the space with his other local ventures, the Zipline and SVR GAS bike park. (208) 415-8707

THE 1313 CLUB

has about as diverse a menu as you'll find in town. Appetizers, Mexican, Burgers, Sandwiches, Dinners and more. The 1313 has plenty of atmosphere with every possible kind of mounted game from Buffalo to Jackaloupe, and a virtual cornucopia of local and regional memorabilia.

CLASSIC BREAKFAST AT THE BROOKS



Suds that save the day

It was in the aftermath of 1910's Big Burn that beer earned celebrity in Wallace. One third of the town was incinerated in the blaze, part of the three million acres burnt in 36 hours across the West.

The fire had so polluted local water drinking supplies that authorities forbade anyone in town to drink anything but beer for three days after the flames were extinguished.

The town celebrates that history with a one of a kind annual craft beer pub crawl. A dozen of Wallace's unique watering holes host both local and regional brews, including the award win-



ning beers made here.

NORTH IDAHO MOUNTAIN BREW:

NIMB's motto is "brewing one great beer at a time." Choose from ales like Baldy Blonde, Sunset Red, or dark Black IPA. Try their Pulaski Porter with hints of chocolate and coffee. The brew is named after one of the heroes of that Great Fire, Forest Ranger Big Ed Pulaski. (If you get real lucky, you might happen upon the local amateur brew club that meets at NIMB regular-

ly). North Idaho Mountain Brew is located inside the City Limits Brew Pub at 108 Nine Mile Road, **208-556-1120** northidahomountainbrew.com

WALLACE BREWING:

In a town famous for its silver mines, they claim beer is the new gold – and they've set out to prove it. The brewery pays homage to the town's wild past, with mining and bordello-inspired monikers such as 1910 Black Lager, Jack Leg Stout, Vindicator, Huckleberry Shandy, Red Light Irish Red Ale, Wallace Strong and Idaho Select Light Lager. Taste them all in the Orehouse Tasting Room. And the Brewery isn't just for humans. Canines are welcome as well. Find them at 610 Bank Street, 208-660-3430. Find them online at wallacebrewing.com. Or find their brews in your local grocer. Wallace Brewing ships product across the Northwest. NORTH IDAHO MTN. BREW/WALLACE BREWING IMAGES



OPEN 7 DAYS A WEEK, 12-7PM

Award Winning Cocktail List!



- Monthly, First Sunday Wine Tastings hosted by Sommelier, Jocelyn
- Best Wine Selection in the Silver Valley
- 40+ Beer Selection
- Friendly, Knowledgeable Staff

The second floor of the Corner is home to the **LIVE ROOM**, a former bordello, now a boutique hotel.



208.753.4261 • 601 Cedar Street, Wallace, Idaho

Welcoming Wallace's newest addition: The Tin Snug

Located at **619 Bank St**, in what was previously a funeral parlor, Owners, Karie and Brian, have created a beautiful beacon of their labor of love. The Tin Snug is now fully renovated, and readily inviting any passerby, whether by music, sweet aromas, or wonderful esthetics. Locals are raving, and for good reason. Offering a variety of food and drink options, it's hard to choose a favorite. Every visit is a win, but just to tantalize



your taste buds, we'll name a few... Breakfast sausage pastry, waffles, Reuben sandwich (quite possibly the best around) and last but not least.... ice cream flights! This is a must-stop in Wallace. Grab a vinyl record for your collection while you're at it. **Open Wednesday-Sunday, 8am-4pm, (208) 784-3642,**



BLACKBOARD MARKETPLACE

600 Cedar St. Wallace • 208-556-5648 • Open Daily 8am-Spm

Blackboard Café



Market & Bakery



Fox & Hare Mountain Wear



Todd's Bookstore & Coffee



All under one roof
blackboardmarketplace.com

511624

C O G S
Gastropub

"GASTROPUB: A place to meet for good drinks & craft beers, serving innovative yet approachable bar food."
•Wed.-Sun. Noon to 10pm
LATE NITE MENU AVAILABLE TIL 10PM

scan for complete menu and drink offerings

**424 6TH STREET
WALLACE, IDAHO
208.682.6220**

At the Center of the Universe



LOOKOUT PASS IMAGE

AWESOME POWDER. TINY LIFT LINES. 15 MINUTES AWAY.

Super snow adventures await

Some of the Northwest's deepest powder, abundant snow-covered trails and seemingly limitless uncrowded back country make winter a real wonderland here. Enjoy alpine and cross country skiing, snowboarding, snowshoeing, snowmobiling, tobogganing, tubing and even ice fishing for whitefish.

You can ski Lookout Pass and Silver Mountain ski resorts from November through April. Lookout is one of the first ski runs to open each winter in the Pacific Northwest.

In fact, in recent winters, Lookout received nearly 500 inches and Silver over 400 inches of the white stuff. Both mountains are groomed, but the powder enthusiast can often find uncut trails and spring "corn snows" that are very skiable.

Each resort is within a 15 minute drive of Wallace.

Snowmobiling trails are groomed from mid-December until early March. Fourteen trails are available ranging from 12 to 65 miles in length. Snowmobiling is allowed on the streets of Wallace (weather and snowpack permitting).

SNOWMOBILE INFORMATION: Coeur d'Alene River Ranger District at (208) 783-2363 or Idaho Parks & Recreation, (208) 682-3814. Trail information available at the Historic Wallace Chamber of Commerce. For snowmobile road conditions in Wallace please email wallacesnowconditions@gmail.com

SKIING INFORMATION: Check out Silver Mountain's year round events and specials at silvermt.com. Visit skilookout.com for complete information and learn about Lookout's Free Ski School for kids. (Lookout Pass is the original Idaho ski area with documented skiing in 1935).

Wet & wild:



Spring time on Wallace's South Fork **RIGHT:** Fishing on the St. Joe Near Avery. **CREDITS: MIKE FEILER, VISIT IDAHO**

North Idaho and the Silver Valley offer an abundance of fish and wildlife for hunters, fishermen, and other outdoor enthusiasts. Two major river drainages, Coeur d'Alene River and St. Joe River systems, and several mountain lakes provide fishing for Rainbow, Westslope Cutthroat, and Brook trout. Hunters can bag plentiful elk, white-tailed deer, and black bear; there is also a limited season on wolves.

The South Fork of the Coeur d'Alene wends its way past Wallace and the Silver Valley to Cataldo, while the North Fork can be accessed by heading north out of Wallace via State Rt. 456. Take the same road south out of town to the St. Joe. (See map pp 24-25). **Check the Idaho Department of Fish and Game regulations and information for details.**

These rivers are also popular for kayaking, canoeing, rafting and tubing. For those who enjoy high country fishing, hiking, or backpacking, there are several mountain lakes within a short distance of the Silver Valley. **Info: contact the U.S.Forest Service www.fs.usda.gov/ipnf 208.783.2363 or Wallace Ace Hardware 208.556.1164**

ACE

Hardware

GET YOUR SUMMER SUPPLIES HERE!

HUNTING, CAMPING, & FISHING SUPPLIES - LIVE BAIT & IDAHO STATE FISHING & HUNTING LICENSE VENDOR, PROPANE TANK REFILLS AVAILABLE AND MUCH, MUCH MORE! STOP IN AND CHECK IT OUT.

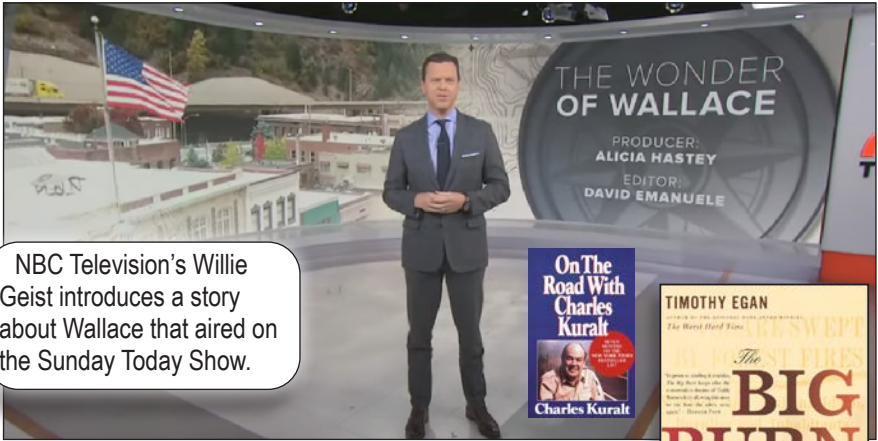
716 BANK STREET

WALLACE, ID

CONTACT US AT

(208) 556-1164

Stories worth telling



NBC Television's Willie Geist introduces a story about Wallace that aired on the Sunday Today Show.

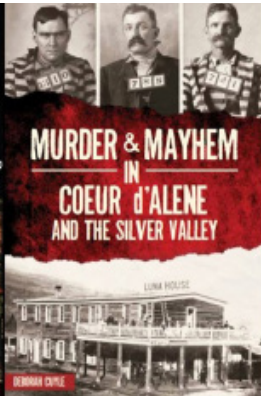
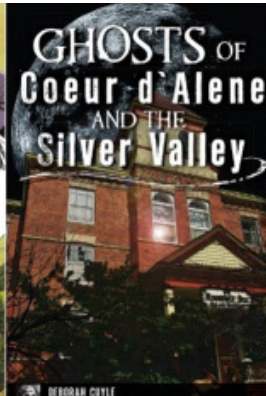
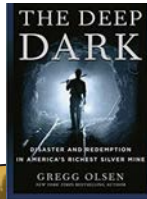
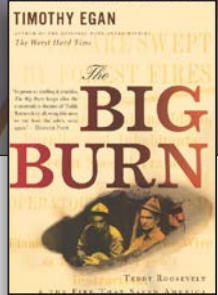
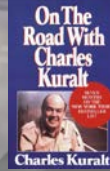
Wallace is a place that has long captured the imagination of America's story tellers.

The character of the little town that could and still does has spawned two NY Times best sellers, two multimillion-dollar Hollywood films, numerous print and broadcast treatments, even an acclaimed Broadway play.

Legendary CBS newsman Charles Kuralt was On the Road here.

Authors Tim Egan and Greg Olsen wrote on the 1910 Great Fire and the Sunshine Mine Disaster. PBS's American Experience featured Wallace in a 2014 multi-part documentary, while Idaho Public Television's Idaho Experience devoted major portions of its 2017 *Titans* series to the town.

Wallace has recently been featured on NBC's Today Show, Comedy Central and Fox Business News, with pieces in regional TV markets in Boise and Spokane along with coverage in the *NY Times* and *Washington Post*. Find these accounts and more on our website Wallaceld.fun. Find the books referenced here and more titles in our local stores and museums.



All 3 of Cuyler's books have wicked & true tales about Wallace!

NOW AVAILABLE AT AMAZON.COM AND IN LOCAL SHOPS AND BOOKSTORES



SOMEWHERE BETWEEN
WA & MT

Fully guided tours, ranging between
325-1800ft



Several packages
Available to
upgrade your zip
game!

Book Online:
ZIPWALLACE.COM

315 5th St.
Wallace, Idaho

208-512-4710

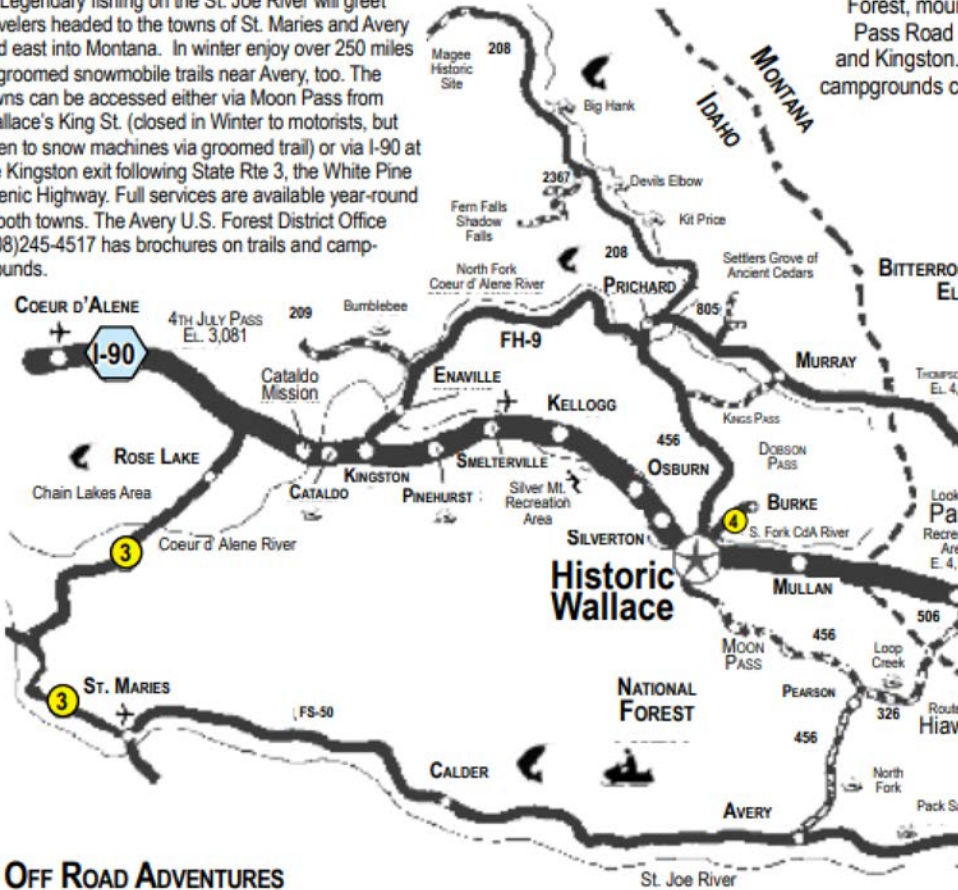


Historic Wallace

St. Maries & Avery

Legendary fishing on the St. Joe River will greet travelers headed to the towns of St. Maries and Avery and east into Montana. In winter enjoy over 250 miles of groomed snowmobile trails near Avery, too. The towns can be accessed either via Moon Pass from Wallace's King St. (closed in Winter to motorists, but open to snow machines via groomed trail) or via I-90 at the Kingston exit following State Rte 3, the White Pine Scenic Highway. Full services are available year-round in both towns. The Avery U.S. Forest District Office (208)245-4517 has brochures on trails and campgrounds.

Forest, moon
Pass Road
and Kingston
campgrounds o



OFF ROAD ADVENTURES

1,000s of miles of nearby back country trails await off road enthusiasts as well as groomed trails for snowmobilers in winter. Info: highmountainatv.org OR fs.usda.gov/ipnf 208.783.2363

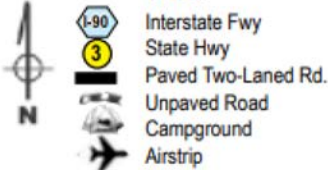


Recreation Area

North Fork/Murray/Prichard/Kingston/Enaville

Mountain pass and scenic river await travelers driving north on Wallace's Sixth Street which becomes Dobson (Rte. 456). The route "Ts" at Forest Service Road 9. Head west and follow the road along river to Enaville. Roll east at the "T" and discover the historic communities of Prichard and Murray. Many picnic areas and can be found, especially along the river. Once in Murray visit the old gold mining camp's famous cemetery, Bedroom Goldmine, Sprag Pole Restaurant and Museum.

KEY:



OT MOUNTAINS
6,424

Pass
859

out
SS
ation
a
725

of the
HATHA

iddle

s for



Loved by **USA Today**, Mother Nature, and everyone who rides it, the historic Route of the Hiawatha Trail is an experience you'll never forget. Glide **15** miles downhill, through **10** amazing tunnels, over **7** sky-high trestles, and past epic natural beauty.

Trail open May 26–September 17
Reserve your seat at [RideTheHiawatha.com](https://www.RideTheHiawatha.com)
208.744.1301 | I-90 Exit 0 at the ID/MT line.



MILEAGE TO HISTORIC WALLACE

FROM:

Seattle	369 miles
Spokane	79 miles
Post Falls	57 miles
Sand Point	91 miles
Coeur d'Alene	47 miles
Kellogg	12 miles
Osburn	4 miles
Mullan	7 miles
Murray	21 miles
Cataldo	20 miles
Lookout Pass	11 miles
Taft	15 miles
St. Maries	57 miles
Pearson	20 miles
Avery	28 miles
Saltese	22 miles
St. Regis	42 miles
Yellowstone	415 miles
Glacier Park	210 miles
Thompson Falls	
via Murray	70 miles
via St. Regis	98 miles
Clark Fork	58 miles
Missoula	114 miles
Kalispell	151 miles
Whitefish	164 miles
Butte	234 miles

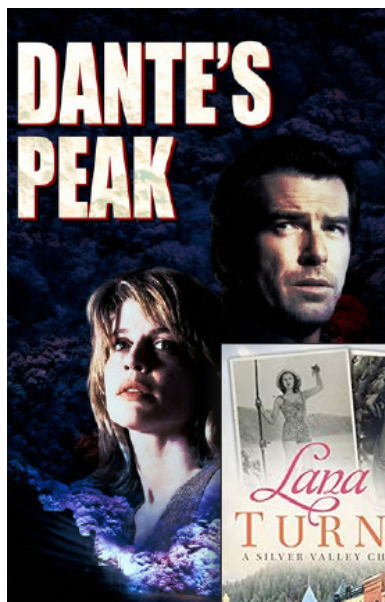


Hollywood in Wallace

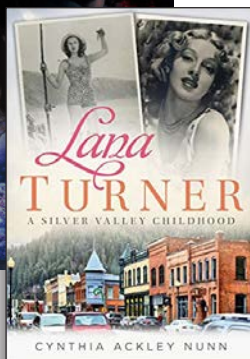
Hollywood and Wallace go back a long time beginning with 1920s era silent films and as the backdrop of major motion pictures in the 1980s and 1990s. Wallace is also the birthplace and childhood home of movieland star Lana Turner. Movies shot in and around here include:

DANTE'S PEAK (1996) was an adventure film from Universal Pictures starring Pierce Brosnan and Linda Hamilton shot largely in Wallace and nearby communities. Released in 1997, the movie depicts how a fictional Dante's Peak town (Wallace) gets obliterated by a malignant volcano of the same name.

Each year thousands of Dante's Peak fans flock to Wallace. Props from the film can be seen at the Wallace District Mining Museum including the Dante's Peak Museum sign and prop styrofoam "bricks" used in the disaster scenes. *Dante's Peak for sale at the Wallace District Mining Museum, The Northern Pacific Railroad Museum, and Sierra Silver Mine tour.*



Center: The movie poster from the 1997 Disaster flick Dante's Peak, starring Pierce Brosnan and Linda Hamilton. filmed here. **Right:** Born 1921 in Wallace's Providence Hospital Lana Turner grew up to be one of Movieland's biggest stars in the 1940s & 50s. A new book about her early life by Cynthia Nunn has was published in 2020.



HEAVEN'S GATE (1979), a western epic from director Michael Cimono and starring among others Kris Kristofferson, Christopher Walken, Jeff Bridges, Willem Dafoe, John Hurt and Mickey Rourke, contains footage filmed in downtown Wallace. The United Artists film bombed at the box office when it was first released in 1981, helping to bankrupt that studio. A director's cut was released in 2012, however, and

that version made the BBC's list of best 100 American films -- referring to it as a "modern masterpiece." Memorabilia from the film can be seen at Wallace museums.

FRIVOLOUS SAL (1925) The action scenes in the 1925 silent film were filmed in mines around Wallace. Mine mills, tunnels, shafts and flumes were featured in this action "epic."



Go Underground on a Historic Adventure!
Summer, Fall and Spring



Hours: May, Sept & Oct. 10am-2pm, 7 days a week through Oct. 15
June, July & August, 10am-4pm, 7 days a week
Bring your camera and a jacket!



509 Cedar Street, Wallace, (208) 752-5151

Town stars on stage

Live theater at Wallace's Sixth Street

Audiences have enjoyed live performances at Wallace's Sixth Street Melodrama and Theater since 1983.

Each summer the actors perform two different melodramas in July and August with other performances throughout the year -- including comedies and musical productions and a Christmas show. The Melodrama performs in the renovated Kelly Building -- which has its own colorful past, notably as part of the Lux Rooms Bordello.

Info & show schedules: sixthstreet-melodrama.com (208)752-8871 or



Washington
Post

New York
Times

Critics rave over new drama based on Wallace

Named the best new play of the season, by the *Washington Post*, and raved by the *NY Times*, a play by Idaho Playwright Sam Hunter debuted on the Broadway stage in Fall of 2019.

Greater Clements is loosely based on Wallace's Sierra Silver Mine Tour, and is one of several of the playwright's dramas based in Idaho. The production was playing NYC's Lincoln Center prior to the covid closures. Look for it in Idaho and the Northwest as well, after premiers in major

Wallace Open Putt-Putt Scramble Tournament



Center of the Universe Re-dedication Ceremony & Silver Bar Raffle

Sept 16th, 2023

Save the Date

Charmed business model

From those fleeing the hassle of big cities to companies seeking a more friendly business climate, Wallace is seeing an influx of new residents, new investment and new business.

In the last few years dozens of entrepreneurs have purchased historic buildings and have either taken over long established businesses or started new ones.

New high tech, finance, manufacturing, hospitality and recreation concerns have all invested recently in town.

It's making for a rebirth of the downtown business core. At the same time the region's oldest industry, mining,

Fox Business News Anchor Lauren Simonetti reporting on new business investment in Wallace



is forecasting double increases in production.

Factor in the major recent improvements in infrastructure including the completion of multi-million dollar

sewer and street paving projects, a new high speed internet provider, strong partnerships between government and business groups, as well as a generous college aid program for graduating high school seniors, and it's no wonder so many folks are coming here.

Contact us at the Chamber 208 753-7151 (wallaceidahochamber.@gmail-com) if you are interested in making a move as well.

**RELIABLE
HIGH-SPEED
INTERNET
SERVICE**



Available in Wallace, Silverton, Osburn, Kellogg, Pinehurst, Smelterville and parts of Kingston

**RESIDENTIAL—BUSINESS—
COMMERCIAL**

**WHEN IT COMES TO RELIABLE INTERNET SERVICE
WE'VE GOT YOU COVERED**

208.687.0700

www.jrreda.com

Honoring the fallen

The Miners Memorial Statue seven miles west of Wallace commemorates the ninety-one men who perished at the Sunshine Mine disaster in 1972, and recognizes the brave souls who waged a herculean rescue effort—some of whom who nearly died themselves, as well as the families whose lives were forever changed from the tragedy.

An underground fire broke out at the Sunshine Mine on May 2, 1972. Though no miners were in the vicinity of the fire itself, they were unable to escape the fire gases coursing through the work areas. The disaster was felt in every



home in the valley.

The Memorial Statue was dedicated exactly two years later. It stands 20 feet tall above its concrete base. It's located at Big Creek just off Interstate 90 (Exit 54) approximately seven miles west of Wallace. A companion sculpture celebrating mining families is at the Wallace Visitor Center.

Noted sculptor Ken Lonn was commissioned for both pieces. The eternal

flame in the miner's helmet at the memorial serves to remind us all of the strength of Idahoans, and especially of those in the Silver Valley.



HECLA LUCKY FRIDAY



Hecla Limited, Lucky Friday Mine
P.O. Box 31, Millar, ID 83846
208.744.1751
www.hecla-mining.com

Wallace is cosmic

The Probable Center of the Universe is a man-hole cover at the center of Bank and Sixth Streets in downtown Wallace. Commemorated 2004 with the tongue in cheek moxie this town is famous for, the designation is Wallace's way of fighting back against federal over-reach.

The town celebrates this bit of Wallace whimsy in September with a special rededication ceremony complete with Drum & Bugle Corps, courtesy gift replicas of 2004 Proclamation and a toast right in the middle of Sixth and Bank. .

In 2020 the celebration caught the attention of NBC's Today Show as well as Fox Business News, both of whom ran stories on the very, very Wallace attraction. Don't believe Wallace is the center of the universe? Locals say, "prove that it isn't."



Johnson's Gems & Collectibles



Something for Everyone, At the Center of the Universe



Idaho garnets COINS crystals
Jewelry fossils Books records
memorabilia Idaho Silver GOLD
toys gems sports cards



Bring the kids and the pets!

Two Locations: 418 6th St & 611 Cedar St, Wallace,

Putting ‘a’ round

Golfers have three gorgeous options to hit the links in the Silver Valley.

The Shoshone Golf & Country Club public course is six miles west of Wallace. To get there, take I-90 to exit 54 and follow the first road, heading west, on the south side of the free-way. Drive to the top of Gold Run Mountain for spectacular scenery and outstanding golf. (208) 784-0161.



**GREAT VIEWS AND LINKS AT
SHOSHONE GOLF CLUB**

Pinehurst Golf Course, Pinehurst. Located Sixteen miles west of Wallace. Take exit #45 off of I-90 at Pinehurst and drive one mile south to the club house, turn left at the four-way stop sign. The club house is on the right, just past the bank. (208) 682-2013

Galena Ridge Golf Course, at Silver

Mountain Resort. The newest golf course in the region featuring dramatic elevation changes and spectacular mountain and valley views.

Located in Kellogg, Idaho just west of Silver Mountain Gondola Village. *Tee times, info: (208) 783-1522 silvermt.com*

The IDAHO BUILDING

When in Idaho, stay at IDAHO

- The 1917 historic Idaho Building
- Beautifully constructed and maintained for today's needs including fiber optic WiFi
- Located in convenient downtown Wallace
- Enjoy year-round activities

“ *Several Great place and amazing location in downtown Wallace. Would give a 5 star for the location if there was one! – Nicolas, Arlington, Virginia*

My husband kept remarking how much attention to detail was given to this place. – Emily, Colville, WA ”

415 SIXTH STREET | HISTORIC DOWNTOWN WALLACE
Idahobuildingwallace.com | Idahobuilding@gmail.com
Reservations: Airbnb Idaho Building Wallace Idaho

FOWL

W.T.F.
WINGS TEA FRIES

MOUTHS

WINGS
SWEET TEA
FRIES

BONELESS AND
VEGETARIAN OPTIONS
AVAILABLE

315 5TH ST. (208)415-8707 WALLACE

Mark your calendars:

Spring, Summer, Fall or Winter. Pick a season or a reason and there's a festival or event in Wallace. Visit the events page of our website WallaceId.fun for more details on these and all 2022 events.

Depot Day Car Show May 12.

Wallace kicks off the Summer Festival Season with Depot Day. Mix hundreds of classic cars on display all over Wallace Streets, vendor booths, kids' events, a beer garden featuring local micro brews as well as live music, real dancing in the streets and yes, more. (208) 752-0111 npdepot.org



Gyro Days & Lead Creek Derby

June 13-17. It's BBQs, a radiothon, a carnival with midway rides and concessions right smack in the middle of Wallace -- all capped off with the Lead Creek Derby Saturday afternoon. Win a pot of cash if you guess correctly how long it takes a giant multicolored leather ball to bob down the river from Mullan to Wallace. Folks line the river the entire seven-mile route. Proceeds go towards local scholarships. Dean Cooper at dean@wallacebrewing.com

Statehood Parade July 3 Ring in Idaho and America's birthdays with a big parade down the town's main drag.

Wallace Blues Festival July 8-9. Winner of the BEST BLUES FESTIVAL award several years running from the Inland Empire Blues Society, the Wallace Blues Festival hosts Live Concerts on downtown Wallace Streets. WallaceBlues.com for tickets and details

Wallace Huckleberry Festival & 5K Fun Run August 19-20. A celebration of all things Huckleberry. Live music, dancing in the streets, raffles, Huckleberry pancake breakfasts, street vendors, kids' activities on the depot lawn, a dunk tank plus a 5K walk and run. 406.241.7134 emma@stay-duhar.com & WallaceHuckfest.com



December FIRST & SECOND WEEKEND

TREE LIGHTING CEREMONY

PHOTOS WITH SANTA

BREAKFAST WITH SANTA

HAY RIDES

MASTER & MISS SNOWFLAKE PAGEANT

LIGHTED CHRISTMAS PARADE

MELODRAMA PERFORMANCES

HOLIDAY BOOZE CRUISE



It's the year in festivals



Under the Freeway Flea Market Labor Day Week-end. Hundreds of vendors ply their wares in the protected open air space underneath I-90 and on the Depot Grounds. Plus live music, kids' games and more. Stroll from booth to booth and enjoy river, mountain and town scape. (208)752-0111 npdepot.org

Center of the Universe Re-dedication & Raffle Sept. 16. A pure Wallace style event. Celebrate the anniversary of the 2004 Mayor's Proclamation with toasts, Drum & Bugle Corps Salute, and guest dignitaries -- including the last stoplight on I-90. Plus there's a raffle for silver and other prizes.



Fall for History Sept.. 28- Oct. 1. Celebration of Wallace's history and its designation as entirely listed on the National Register of Historic Places. Speakers, historic

home and museum tours, live theater reenactments and more.

Hometown Christmas Dec. 1-2 & 8-9 Enjoy lighting of the streets and historic buildings, crafts fair, the Winter Walk, Kids' Pageant, night time Light and daytime Paw parades and downtown merchants specials.

Extreme Ski-Jor, Presidents Day Week-end February 2023 A one of kind event with ATVs towing skier and snowboarders down Wallace streets. As competitors vie for cash and glory. (Weather dependent) *SkiWallace Facebook and SkiWallace.com.*



- Music
- Food Vendors
- Crafts
- Kids Games
- ...and more!

**38th Annual
HUCKLEBERRY FESTIVAL
& 5K FUN RUN**
August 19th & 20th
Saturday-Sunday
WWW.WALLACEHUCKFEST.COM

Historic Wallace, Idaho

Four blocks to shop:

From souvenirs to sporting goods; weapons to precious metals, antiques to apparel, Wallace offers four blocks of shopping and services for visitors. *(Find these merchants also on our website at Wallaceld.fun)*

ANTIQUES: *North Idaho Trading* bills itself as the weirdest little shop in the Northwest. Between the mermaid, all the taxidermy and the Wallace ephemera, there's a world of hidden treasures to be found at the store. *6th & Bank 753-2911. The Past-Present Shoppe* offers its own menagerie of items, always changing inventory and is fun just to stroll through the aisles. *413 Sixth St. 556-1500*

BOOKS & SOUVENIRS: You can pick them up all through town at nearly every business. A great place to start are the museum gift shops. Look for books, jewelry, silver, and Wallace and Idaho themed apparel and gifts there too.

The **Mining Museum** is at *509 Bank 556-1592* with a full gift shop while the **Depot Museum's** gift shop is at *219 Pine 752-0111*. Pick up one of a kind photo souvenirs at the **Barnard-Stockbridge** at *412 Fourth St. 556-5580*. The **Mine Tour** at *509 Cedar 752-5151* also has a gift shop full of souvenirs.

JEWELS, GEMS AND SILVER: *Johnson's Gems at the Center of the Universe* offers souvenirs as well, but their main stock in

trade is precious gems, coins and jewelry. Plus collectibles, books and a one-of-kind attraction their **Galaxy Room** with fluorescent minerals. **Two Locations at the Center of the Universe**, *418 6th St & 611 Cedar St, 556-0983. Idaho Silver* has been in the downtown for over 40 years offering fine jewelry from around the planet, but featuring silver items right from Silver Valley mines. *606 Bank 556-1171.*

APPAREL: Find high quality Idaho and Wallace themed clothing and merchandise at **The Shirt Shop**. *416 6th St.* The Blackboard Marketplace's **Fox & Hare Mountain Wear** is another must stop featuring name brand clothing and outdoor apparel - not out of place in any upscale ski town, but in Wallace and priced for Silver Valley pocket books. *6th & Cedar. 556-5648. Funks' Fabulous Finds* is another one of our favorites. Vintage clothing tastefully selected in the wonderful old Five and Dime Funks store front. *518 Cedar 556-1700*

ARTS & CRAFTS: Three must stops here. **The EurekaSally Gallery of Art and Chocolate** features artists, sculptors and craftsmen from around the West. Art & Craft classes too -- in the grand old Shoshone Building at *418 Fifth St. 406 212-5936. Woodland Market* is all local craftsfolk. One of a kind merchandise, art & craft classes in a playful, cheery shop. *511 Bank. 208-819-*




BY THE WAY CAMPGROUND
 RV Dump • Bathrooms & Showers
 Tent Sites Available
 Easy Access to Rails to Trails Bike Path
 • Water / Electric at every RV Site
 Laundry Facility is in and working!

208-682-3311
 907 N. Division St.
bythewaycampground.com

133725



Enjoy the rustic feel of the Silver Valley



Full kitchen | Onsite laundry | Modern appliances
 3 available Vacation Condos-find us on airbnb!

801 N Division, Pinehurst, Idaho (208) 661-7054

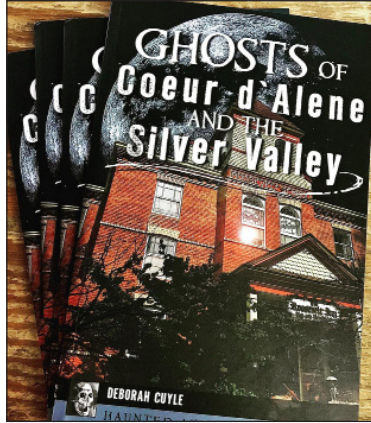
downtown Wallace

2105.

Newest edition to Wallace in this category, **North Idaho Unique Creations** offers a variety of gifts and art crafted by local artists. 621 Cedar (208) 709-8563

HEARTS, FLOWERS AND TATS: We really don't know how to describe the Funky Monkey. Their biggest sellers are smiles. It's just plain fun with a variety of Kitschy shirts, signs, jewelry, cups plus coffees and beer and wine. 604 Bank St. 786-2278.

Smiles also are on sale at **Sol & Serre**. The flower shop and more earns huge raves from clientel, so much so they stay super



**Find local authors
like Deb Coyle
in shops across
Wallace**

busy. If you don't see them in the store at 618 Bank next to Wallace Brewing, they're probably out on a delivery. Call them 509 768-1670.

If you need a smile tattooed somewhere other than on your face, see our friends at **Dan's Tattoo Shop**. Dan has a well earned loyal Silver Valley following. Find him in the Shoshone Building next to EurekaSally. 412 Fifth St.

771-1717



Let's Celebrate
Idaho Craft Beer!

April 27, 2024

Www.WallaceId.fun

It's a Bloom Town

How to make a beautiful place more beautiful? Add some flowers.

For over 20 years the Wallace Flower Project has bedecked city streets with hundreds of baskets and hay racks overflowing with flowering plants and greenery.

The baskets go up in May and stay up through the first week of October. Made possible by donations and with support of the city of Wallace along with an army of volunteers.

For more details or to contribute, visit the Wallace Flower



In the Historic
Wallace Corner
6th & Cedar Streets

Wide variety of
coffees, specialty
drinks, adult
beverages, and
baked treats

Add a splash of spirits after 10am



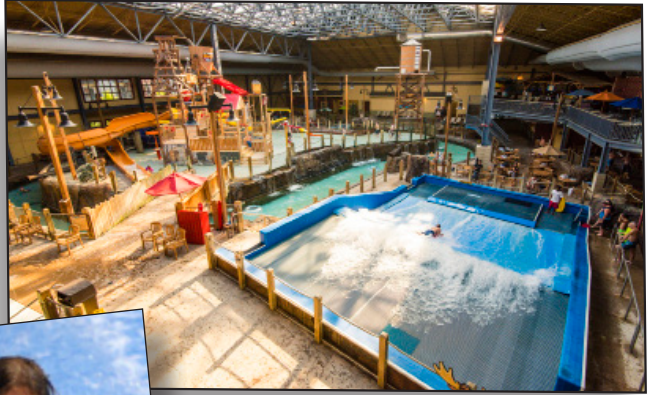
Open daily at 6:30am

visit us on facebook

Stay in cool in pools

Kellogg and Wallace boast plenty of ways to beat summer heat.

Reopening this spring after a multi-year, million dollar plus renovation project, Wallace's Historic Municipal



Pool offers relief from the summer time heat, just steps from the Center of the Universe at Hotel and Sixth Streets.

In Kellogg Ride on North America's longest gondola into cool mountain air and ride down Silver Mountain's top rated Bike Park trails.

Even better stay at the resort's Morning Star Lodge and enjoy their Water Park as an amenity.

Take your pick of fun choices. Float the Lazy River, play on Minor's Island, hop on one of the tube slides for a wild ride, and visit the main attraction — Silver Rapid's FlowRider continuous surf wave. Visit their website to take a

360° virtual tour. The Lodge also offers summer adventure packages for all summer activities including river rafting, biking, golfing, fishing, disc golf, tennis, geocaching, ATV adventures, and kids activities. **Info: 208.783-1111, ext 8247 silvermt.com. Groups rates and**



208-659-3563

Zanetti
BROS. INC.
Since 1935

Serving the Silver Valley for over 85 years

- Construction Materials
- Pre-mix Concrete
- Heavy Civil Construction
- Remediation & Reclamation

ZANETTIBROS.COM

P.O. Box 928 (208)752-1178 OSBURN, IDAHO



Bring your group here

Wallace can be the perfect place to bring your convention or gathering. Just ask the groups who've come here in the past and those planning to come in the future. From a recent Porsche Car Club of America convention to a planned 2022 National Gathering of Buffalo Soldiers, Wallace can accommodate groups large and small in a variety of venues and group activities.

The Wallace Inn has a capacity for 130 in its convention center and side meeting rooms, while the Wallace Elks Lodge can host up to 300 conventioners in the upstairs and downstairs halls, bars and dining areas.

Add in a score of restaurants, bars and microbreweries, group team building activities like cycling, ziplines, mine and museum tours, walking tours of the town, plus plenty of shopping, parking and small town hospitality, and Wallace may be the perfect place to plan your gathering or party. Contact us here at the chamber to learn more: WallaceIdahoChamber@gmail.com or call 208 753-7151



Wallace Public Library

Mon & Thurs: 12:00 to 8:00

T, W, F: 12:00 to 5:30

**We also have FREE Internet access.
Wireless hot spot available 24/7.
No password required.**



**208-752-4571
415 River Street
Wallace, ID**

**wallacelibrary.com
wallacelibrary@lili.org**

Twin City Furniture

Member of Northwest's Largest Furniture Buying Group

Furniture - Floor Covering - Appliances

110 McKinley Ave. (208) 786-9351
KELLOGG, IDAHO
Delivery to the entire Silver Valley

On a mission for history



Idaho's Oldest standing building is Cataldo Mission. Located 30 miles west of Wallace just off Interstate 90, the Cataldo Mission offers stunning views both inside and out.

Erected in 1853 by Jesuit missionaries and Native Americans from the Coeur d'Alene Tribe, the completely restored mission building and adjacent state park and interpretative center are a must stop for any traveler and shutterbug. Open year round. (208)682-3814 parksandrecreation.idaho.gov VISIT IDAHO IMAGES

Ghost book and ghost buildings

With all the old buildings and homes in the area, there are plenty of stories about ghosts. From Maggie at Wallace's Jameson to the spirits at Spokane's Davenport Hotel author Deb Cuyle researched the stories and put them in the pages of her new book, *Ghosts of Coeur d'Alene and the Silver Valley*. Find it in at book-stores across the region.

Then there is the website dedicated to Wallace's Ghost Buildings. Not actual hauntings, but the buildings no longer standing. *Tour Wallace*, powered by local high school interns, local high tech company Gravis Tech and the local Morbeck Foundation, shows where many of the town's magnificent former structures, including two hospitals, the Samuels Hotel and the old Union Pacific terminal, used to stand.

See for yourself at gravistechtourwallace.com.

47th Annual Memorial Day FLEA MARKET

Montana's Largest

St. Regis, Montana

May 25, 26 & 27, 2024

Saturday, Sunday and Monday
Daylight to Dusk

Take Exit 33 off I-90
Follow Signs to
Community Park & Community Center



Courtesy of Mike Richter, mikewhite.com

VENDOR SPACES

24' x 20' Outdoor
10' x 10' Outdoor Covered
10' x 10' Indoor
\$100/3 days - All spaces
Set-up Allowed Friday
From 9 a.m. to 8 p.m.

For additional information, contact:

Anita Bailey 406-649-1304

E-Mail: StRegisMTFleaMarket@gmail.com

Website: StRegisMTFlea.org

Advanced registration fees should be sent to: St. Regis Community Council, Inc., St. Regis, MT 59866
Or: Register and pay on the website: StRegisMTFlea.org

BREAKFAST ★ BARGAINS ★ CONCESSIONS ★

**PETS IN PARK MUST BE ON
LEASH AND IN YOUR CONTROL**

NO BIKES IN PARK



Wallace's wild past

There is so much to tell about Wallace, Idaho, a city entirely listed on the National Register of Historic Places.

The driving force behind our history is the region's mineral wealth.

Since 1884 over 1.3 billion ounces of silver have been mined here. One mine alone here—the Sunshine—has produced more silver than the entire Comstock Lode in Nevada. This place is one of the richest silver districts on the planet, or as is said here “The Silver Capital of the World.”

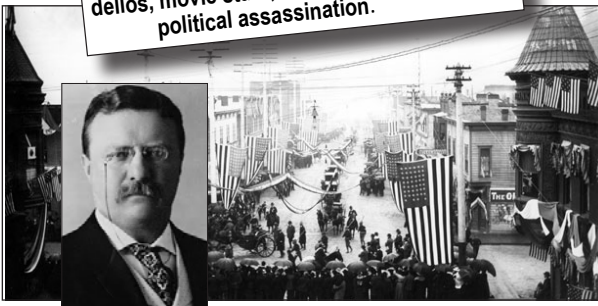
(And yes we are still mining here, supplying the minerals that make 21st Century communications, transportation, energy and other aspects of modern life possible).

That wealth has driven the story of Wallace, built the grand homes here that would not be out of place in San Francisco and the stately buildings of the downtown commercial district.

Those riches also



Wallace has a wild, rollicking history of literal backbreaking labor, overnight fortunes made and lost, war, gambling, bordellos, movie stars, Presidential visits and political assassination.



Wallace's 1903 visit from U.S. President Teddy Roosevelt

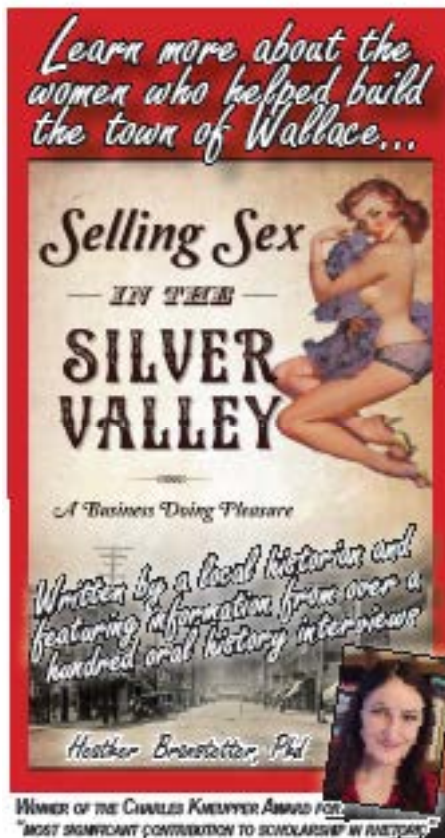
fueled two incredibly violent labor conflicts—the result of which was the blowing up of mills, trains, mass arrests and the assassination of an Idaho governor. (1892-1905)

Wallace's history is also entwined in the nature surrounding it. The pine covered Bitterroot Mountains and the riv-

ers and streams tumbling down its canyons have shaped this place. Perhaps the most significant natural event was the Great Fire of 1910 -- still the largest land fire in U.S. history. It burnt 3 million acres in 36 hours including a third of Wallace, and claimed up to 90 lives.

Teddy Roosevelt, who had visited Wallace in 1903, used that sacrifice of men and material as well as the heroes of that fire to cement the mission of the US Forest Service to preserve and protect our nation's forests.

The main reason however behind



...and colorful present

FALL FOR HISTORY SEPT. 28-OCT. 1

Wallace's official historic designation is Interstate 90. In 1967 Federal and State govts wanted to pave over the town to build the freeway. But the town fought back and held up the project in court for 17 years.

By 1986 city fathers and mothers had quietly put every building in the downtown on the National Register. It was a major precedent for the National Preservation Act, and forced construction of a \$43 million bypass.

Fall for History Festival in October

Today Wallace celebrates its colorful past in the most colorful time of the year -- October's Fall For History Festival -- with tours of historic homes and churches, speakers, historic enactments, plays and more.

It's all part of the many attractions here that continue to draw visitors and new residents to Wallace: safe, walkable streets, charming old town and complete services -- right on the doorstep to wilderness and

nearly limitless outdoor recreation.

To learn more of our history, visit our museums and/or the history section of our website at WallaceId.fun.

And to become part of our present, just contact us: *Historic Wallace, Idaho Chamber of Commerce* 208-753-7151 wallaceidaho-chamber@gmail.com



FALL FOR HISTORY TOUR EVENT

SEPT 28 – OCT 1
WALLACE, IDAHO

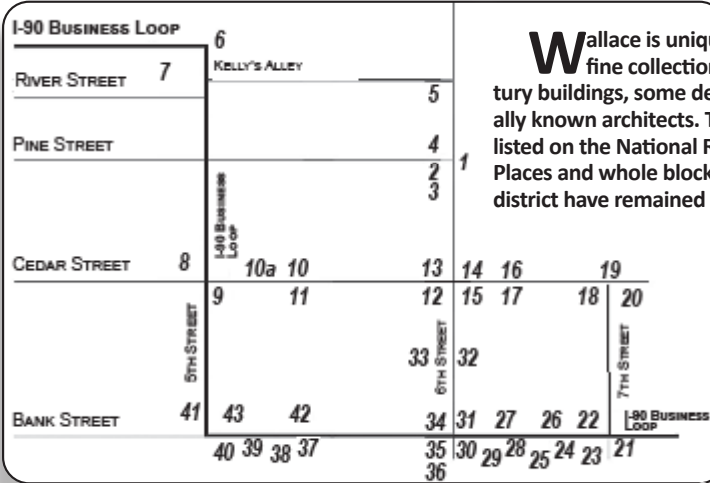


Play & Stay for the Adventure

Register now at www.WallaceId.fun



A Walk through History



Wallace is unique because of its fine collection of turn-of-the-century buildings, some designed by nationally known architects. The entire town is listed on the National Register of Historic Places and whole blocks in the business district have remained virtually intact for a hundred years or more.

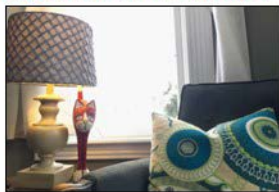
On your tour, look for architectural features such as cast-iron cornices and pilasters, terra cotta trim and decorative glass.

Some buildings still have the old glass windows with irregular surfaces. Records occasionally conflict on construction dates; in these instances the most likely dates are listed. Historic Wallace was destroyed by fire on July 27, 1890. Only two structures survived. The surrounding forests were also spared. Reconstruction began immediately. This time predominately masonry structures were built for better fire resistance. Three of these 1890 vintage structures still grace the corners of Sixth and Bank streets.

- | | |
|-----------------------------|---------------------------------|
| 1. N. PACIFIC DEPOT | 22. HALE BLDG. |
| 2. JAMESON HOTEL | 23. IDAHO PRESS BLDG. |
| 3. SWEETS HOTEL | 24. COEUR D'ALENE HARDWARE |
| 4. CHAMPA BLDG. | 25. BARNARD BLDG. |
| 5. KELLY BLDG. | 26. STEVENS BLDG. |
| 6. JOHN MULLAN SUTURE | 27. MASONIC HALL & TEMPLE |
| 7. CARNEGIE LIBRARY | 28. HOWES AND KING BLDG. |
| 8. ELKS TEMPLE | 29. MANHEIM BLDG. |
| 9. SEARS McDONALD BLDG. | 30. ROSS INSURANCE BLDG. |
| 10. FURST BLDG. | 31. 1ST NATIONAL BANK BLDG. |
| 10a. EAGLES LODGE | 32. THE IDAHO BLDG. |
| 11. FOLLET BLDG. | 33. GEORGE BLDG. |
| 12. HORNBY-MOONLEY BLDG. | 34. DELASHMUTT BLDG. |
| 13. WALLACE CORNER/HOTEL | 35. WHITE & BENDER BLDG. |
| 14. ARMENT BLDG. | 36. AULBACH BLDG. |
| 15. CHRYSLER/PAVILION BLDG. | 37. FINCH BLDG. |
| 16. BI-METALLIC BUILDING | 38. THE HERBINGTON HOTEL |
| 17. RYAN HOTEL | 39. ELKS LODGE |
| 18. BARNARD STUDIO | 40. WALLACE POST OFFICE |
| 19. WALLACE CITY HALL | 41. SHOSHONE BLDG. |
| 20. GYDE TAYLOR BLDG. | 42. NORTH IDAHO TELEPHONE BLDG. |
| 21. SHOSHONE COUNTHOUSE | 43. WALLACE MINING MUSEUM |

The Great Catsby

"Such an **adorable** house! Worthy of 6 stars!"



Historic Queen-Anne Victorian 4BD home

AirBnB.com/h/Catsby
DiscoverWallace.com/Catsby

THE CHURCH HOUSE

"One of the **most unique** Airbnb experiences I've had!"



Historic little chapel turned into 2BD home

AirBnB.com/h/Church
DiscoverWallace.com/ChurchHouse

Wallace's Walking Tour

START THE TOUR AT THE DEPOT.

1. Northern Pacific Railroad Depot Museum (1902). The depot was finished in 1902. The elegant brick and concrete edifice, "ornate and picturesque," was built in the chateau style. It is a reflection of the tastes of the company and the times. The concrete blocks were made from tailings from concentrates of major Coeur d'Alene Mining District mines. One of the finest depots of its type in the Pacific Northwest, this structure was moved from its original location on the north

side of the river in 1986. Recipient of Idaho Preservation Council's Orchid Award.

2. Jameson Hotel (1907), 304 6th St. Built for Theodore Jameson to replace the frame structure of the same name and location, this pair of concrete block three-story

buildings originally had matching cornices. The facade has been painted. The structure has been restored with vintage furnishings indoors and out, and the interior is designed to make the two buildings function as one.

This work earned owners the Idaho Preservation Council 1979 Orchid Award. Maggie, the ghost, is a regular customer of the Jameson. The Jameson's original wood structure was

constructed in 1889.

3. Sweets Hotel (1907), 308 6th St.

4. Camia Bldg. (1914), 218 6th St.

Three-story red brick building with

an overhanging metal cornice at the top and a somewhat narrower one between the first and second floors. This is thought to be the site of the origin of the 1890 fire disaster that leveled the entire downtown district. Now Albi's Restaurant & Gem Bar.



Wallace Elks Temple (#8 on the tour). To the immediate west is the Ryan Hotel annex, no longer standing. *Wallace Barnard-Stockbridge Museum*

THE METALS BAR
WALLACE ID

OLDEST WATERING HOLE IN WALLACE
DARTS - PINBALL - BILLIARDS - ATM

514 CEDAR ST. - (208) 752-5213
OPEN DAILY, 11AM-2AM

The Wallace Walking Tour

5. Kelly Bldg. (1891), 212 6th St. Believed to be the oldest wood-frame structure in the business district. This two-story hotel with a flat roof has a projecting wooden cornice supported by wooden brackets. A smaller cornice separates the first and second floors on the front. In past years, the Kelly Building also had “female boarding” accommodations upstairs and a hardware store on the ground floor. Currently the home of the Sixth Street Melodrama & Theater.

6. Capt. John Mullan Statue. On the north end of 5th Street near the River. Captain Mullan engineered this route through the Bitterroot Mountains. Work on the military road began in 1859 and was finished in 1862. A path 25-feet wide was cut through the forest. Many bridges were built across the South Fork of the Coeur d’Alene River. By 1866, the Mullan Road had been reconstructed, and the route would play a principle role in the Coeur d’Alene Mining District’s development. Today, Interstate 90 and State Highway 95A follow the Mullan

7. Wallace Carnegie Library (1910-1911). River and 5th Sts.

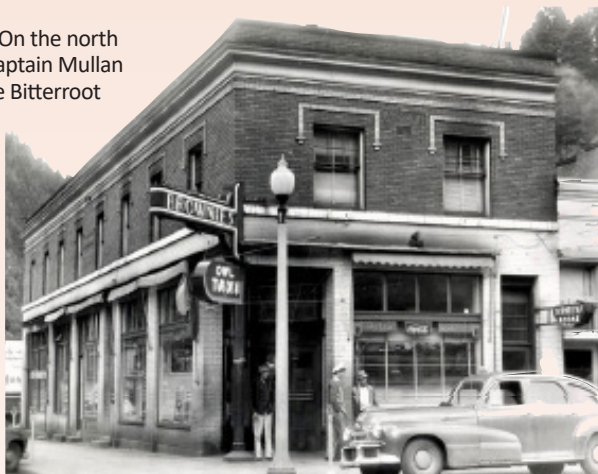
Its Renaissance Neoclassic design is found as a template on many small town Carnegie libraries. It is a portico live bay brick building with a low-pitched roof. Note the three-inch thick heavy entry doors adorned with prismatic leaded glass reproduced from the original designs -- recaptured during the building’s restoration in 1999.

8. Elks Temple No. 331 (1924), 419 Cedar

9. Sears MacDonald Bldg. (1905), 500 Cedar St. Built to be the Hope Hospital in 1905, this building later was the Morrow Retail Stores

headquarters for most of the 20th Century. First established in 1880, Morrow’s was at one time in 17 north Idaho communities. The store carried everything from washing machines to groceries. It had quality clothing, cosmetics, shoes, jewelry, china and much more. It became the Brooks Hotel in 1992.

10. Furst Bldg. (1900), 517 Cedar St. Constructed by John G. Furst, a Norwegian who also operated a saloon in Gem.



Arment Building (#14 on the tour). Now the Silver Corner Bar & Lux Rooms Boutique Hotel. *Wallace Barnard-Stockbridge Museum image*

Over the years it has housed a soda fountain and ice cream bar, a dance floor and card room, as well as hotel suites.

10A. Eagles Bldg. (1905), 515 Cedar. Galbraith and Hall of Spokane designed the Eagles Lodge hall in 1905. The building employs local concrete block made of tailings from nearby mines and a small amount of silver and gold. Tailings were also used for constructing the county courthouse, homes and street paving. Now the Sierra Silver Mine Tour.

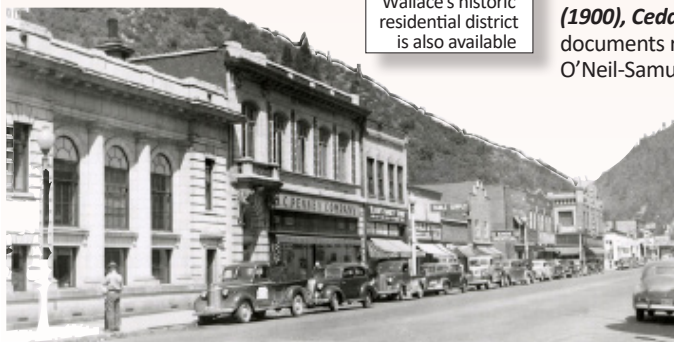
11. Follett Bldg. (1898), 518 Cedar
12. Holohan-McKinlay Bldg. (1900), Cedar and 6th Sts.

Some documents refer to the building as the O’Neil-Samuels Building. The cut-corner

entrance has a Corinthian-columned entry with a round arched pediment. The ground floor at one time housed five separate stores. For many years professional and business offices were on the second floor, referred to as Cozy Corners.

Tour our historic homes & churches, too.

A separate guide of Wallace’s historic residential district is also available



An aptly named Bank Street, with First National Bank (#37) on the left and adjacent J.C. Penney Store (#27), now Oliver’s Mercantile. *Wallace Barnard-Stockbridge Museum image*

A Walk through History

Private residences occupied the third floor.

13. Fuller Hotel later known as Wallace Hotel (1890), 525 Cedar St. One of the first dozen masonry structures built after the 1890 fire, this is the oldest hotel building in Wallace. The eastside is out of plumb. One theory is that the mistake occurred in the rush to replace housing and commercial space after Wallace burned to the ground in 1890. The out-of-plumb mistake was noticed only after thousands of bricks had been laid. Instead of wasting time in starting over, builders continued



Wallace Carnegie Library at River and 5th (#7 on the tour).

Wallace Barnard-Stockbridge Museum

until the work was straightened. (This theory is based on a survey of a structural engineer's report). The Hotel housed the first bowling alley for both men and women. May Hutton of Hercules Mine fame ran a restaurant there during her early years in Wallace. Currently 6th & Cedar Coffee House.

14. Arment Bldg. (1911), 601 Cedar This structure was the third Arment Building on the same lot. The first was destroyed in the 1890 fire; the second was a frame building which was replaced by the present masonry structure. The second story, which retains its brick ornamentation and cornice, operated as a bordello from the 1920s into 1980s. Currently the Silver Corner Bar and Lux Rooms.

15. Civic Bldg. (1933), 401 6th St. The 1890 frame building occupied by Jesse Tabor was destroyed by fire in 1933, and replaced with a brick building. Designed by noted architect Gustav Pehrson, who also designed several Spokane mansions and prominent buildings including the Spokane Chronicle. Currently Blackboard Marketplace

16. Bi-Metallic Bldg. (1911), 605 Cedar St. This two-story brick building was a saloon and hotel for most of its existence. Early maps showed a separate frame structure housing a bordello behind the

brick one. This business later moved above the saloon and operated until 1988. The second floor, now the Oasis Bordello Museum, remains virtually unchanged from the day the occupants departed, leaving everything intact since 1988.

17. Ryan Hotel (1903), 608 Cedar.

Believed to be the longest continuously operated hotel in Wallace. Records show operation from 1903 to the present.

18. Barnard Studio (1907), 614 Cedar St.

T.N. Barnard came into this area from Wyoming and first took his photography studio to the gold fields in Murray. Barnard's assistant, Miss Nellie Stockbridge, practiced commercial and portrait photography at this address until her retirement in the late 1960s. The complete collection of Barnard and Stockbridge photographs are now stored at the University of Idaho, Special Collections in Moscow, Idaho. The entire digital catalogue is also available in Wallace at the new Barnard-Stockbridge Museum.

19. Wallace City Hall & Fire Dept. 703 Cedar. Built in 1924. Across the street is the former site of the Samuels Hotel (1906) Cedar and 7th Streets. This classic Victorian hotel was considered one of the finest in the Northwest when it opened. The Samuel's was razed in 1974 as too expensive to maintain. It was the only brick building ever razed in downtown Wallace.

20. Gyde Taylor Bldg. 414 7th (1916)

21. Shoshone County Courthouse (1905), 700 Bank St. Constructed with locally produced concrete blocks containing mine tailings. The blocks are naturally soft, so over the years the courthouse outer walls have been covered with a stucco material. This structure is a good example of neoclassical revival style. Designed



A Walk through History

by Stritesky and Sweatt of Spokane, it stands three stories on a raised foundation. It is distinguished by the two-story arched windows about the central entry with its balustraded balcony supported by medallions. Other features include pilasters, denticulated

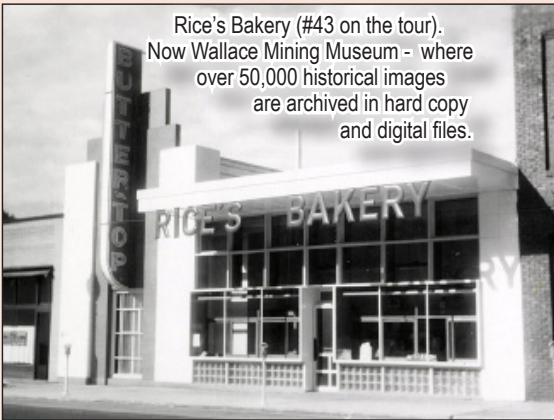
cornice and high parapet. Legendary attorney Clarence Darrow defended accused murderer Steve Adams in this building in 1906. The trial was part of the overall proceedings involving the alleged conspiracy to assassinate Idaho's former Gov. Frank Steunenberg in December 1905.

22. Hale Bldg(1925), 621 Bank St.

23. Idaho Press Bldg. (1890), 622 Bank St.

This building begins what is believed to be the oldest block in the downtown district. It was originally a dry goods store. This is the borderline street for damages incurred by the great fires of 1910. This two-story brick building has a brick cornice, segmentally arched windows and a cast iron front. Currently the Idaho Press Gallery.

24. Coeur d'Alene Hardware Bldg. (1890), 612-622 Bank St. This building replaced the original wood frame structure owned by Holley, Mason, Marks and Company. It is designed to support six stories. The original appearance has been well preserved. The second story has segmentally arched windows with a brick cornice above. An addition was added to the east in 1896. A second Otterson Building was constructed in 1900. The three structures were used as a single building by Coeur d'Alene Hardware. It was both hardware outlet and main office for the foundry and manufacturing plant, which produced machinery that were shipped all over the U.S. and to several foreign countries. Currently the Pizza Factory, Sol & Serre Florist and Wallace Brewing.



Rice's Bakery (#43 on the tour).
Now Wallace Mining Museum - where
over 50,000 historical images
are archived in hard copy
and digital files.

25. Heller Bldg (1898), 608 Bank St. (Currently the 1313 Club) This two-story brick building has two storefronts joined internally on the first floor. The cast iron pilasters remain. The second story retains its segmentally arched win-

dows. The building has housed a hotel upstairs, a bus depot, a barbershop and a cafe since it was rebuilt in 1898. The 1313 Club completed the most recent renovation in 1998.

26. Stevens Bldg. (1906) 609 Bank St.

27. Masonic Hall and Temple (1917), 605

Bank St. This is a two-story brick building with terra cotta and granite trim. Designed by G.I. Hubbell of Spokane. It is distinguished by the extensive use of terra cotta on the second story and a round-arched entry with bracketed curved and denticulated cornice.

28. Howes and King Bldg. (1890), 606

Bank St. Original structure erected in 1884 by owners Henry E. Howes and Horace G. King, early Wallace merchants. These two men ran a grocery business and general store out of a log cabin at this site. Bricks were manufactured in Silverton at a local brickyard. Currently Idaho Silver.

29. Manheim Bldg. (1890), 604 Bank St.

Erected soon after the 1890 fire. This two-story brick building has incurred many changes of the facade over the past century. In 1903, the doorway was in the center of the structure and a mortar and pestle adorned the sidewalk out front. During the great fires of 1910, the U.S.

Forest Service had an office upstairs. The space later became a pool hall and bar.

30. Rossi

Insurance Bldg.

(1890), 602 Bank

St. This building was originally built for the Bank of Wallace. In 1892, the First National Bank of Wallace was created and occupied the site until 1916. The



The Wallace Walking Tour

second story was added later with a pressed metal turret. This turret is a mimic of the one on the White and Bender Building across Sixth Street. The rear entrance features double doors with leaded glass, which are topped with a fan window pattern of elaborate leaded glass. Rossi Insurance is the oldest established business in the downtown historic district.

31. First National Bank Bldg. (1917), 419

6th St. The second renaissance revival, white terra cotta structure features engaged doric columns, round arched imented entry, cornice and parapet. The building went through extensive restoration in the 1980s and received the Orchid Award from the Idaho Preservation Council in 1988. Built originally to house First National Bank of Wallace which was chartered in 1892.



The Jameson, #2 on the tour. Wallace Barnard-Stockbridge Museum archives

32. Idaho Bldg. (1917), 413 6th St. The two-story red-brick building was constructed for Mrs. Otterson and O.D. "Deke" Jones. It is distinguished by its original mezzanine windows and the extensive terra cotta trim. The Idaho Building housed the Pennaluna Company from 1925 until 2015. Currently Past & Present Shoppe.

33. Gearon Bldg. (1927), 414 6th St.

34. DeLashmutt/McAulay Bldg. (1890), 424 6th St. The building was first a post office and county courthouse after the downtown district fires of 1890. The upper-story rooms were known as the "court rooms," providing boarding. Court proceedings were held here after the hijacking of the county records en route to Osburn from Murray until the present courthouse was built in 1906.

35. White and Bender Bldg. (1890), 524 Bank St. One of the best Queen Anne commercial

sites. White and Bender Co. expanded here from Murray in 1888. The company opened shop on the corner of Sixth and Bank while the fire of 1890 was still smoking — in a tented structure at first. White and Bender was a retail/wholesale mercantile well into the 1930s. The company then became a finance

company and a leader in public financing of appliances and automobiles. The building includes some original White and Bender shelving. White and Bender were the first to install electric lights in Wallace. It held the Stewart Wallace Drug and Selig Water Company. Currently Johnson's Gems.

36. Aulbach Bldg. (1891), 520 Bank St. Built by owner Adam Aulbach, editor-in-chief of the

Wallace Free Press, who came over the hill from Murray. He operated a print shop in the back with power from Printer's Creek. This creek is routed under the building, through Wallace, and drains into the

South Fork of the Coeur d'Alene River.

37. Finch Bldg. (Circa 1898), 516 Bank.

38. Herrington Hotel (1898), 512 Bank

39. Elks Lodge Hall (circa 1905), 506 and 508 Bank St. Designed by Pruesse and Zittle of Spokane, this is the site of the first Elks Lodge in Wallace, instituted on Jan. 4, 1896. The new lodge was built on Cedar Street in 1924. Notice the elk hoof prints in the sidewalk outside the entrance to the former lodge.

40. Wallace Post Office (1905), 500 block of Bank St. A two-story brick building that is three bays wide. Although remodeled, it retains its second story window and a cast iron pilaster on the first story. Now North Idaho Trading Co.

41. Shoshone Bldg (1916), 416 and 420 5th St. The second story is distinguished by round arched windows with polychromatic tiles in its spandrels. A bracketed cornice caps the building, and it has a cast stone entry. The tiles were added later. First floor tenants include

Dan's Tattoo Shop and Eureka Sally Gallery.

42. North Idaho Telephone Co. (1908), 517 and 517 1/2 Bank.

43. Wallace District Mining Museum, 509 Bank St. Today one of Idaho's leading museums, the building housed Rice's Bakery until the early 1970s.



The Darrington effect:



Seeing North Idaho through the eyes of late photographer John Darrington, the photo artist who crafted these images and many others. A seasoned hard rock miner, John possessed the toughness and strength common among those who work miles underground. He also had a gentle spirit and unmatched knack for capturing the beauty around him. A humble man, he most likely would have been embarrassed by this tribute. *Thanks for these images John, and rest in peace --Editor.*





So Natural Val

- Natural Wellness Coach
- Impact Advocate
- Essential Oil Consultant
- Creative Coordinator
- Personal Development Coach



Valene Finlay

208-215-7984
sonaturalval.life
so.natural.val@gmail.com



Unique Boutique Hotel Experience

RYAN
HOTEL

14 Rooms
Starter Breakfast
High Speed Wi-Fi
Bike Storage
"Scene on Cedar"
Event Center



RYAN HOTEL

Historic Wallace, Idaho
Celebrating 120 years
SINCE 1903



www.hotelryan.com



(208) 753-6001



608 ½ Cedar Street
Wallace, ID 83873



208-753-7121 • wallacervpark.com
Full RV Sites • Tent Sites • Dry Camping
Restrooms and Showers

All in one GREAT Place

Please visit our website to learn more citylimitsbrewpub.com

208-556-1885 • 108 Nine Mile Road • Wallace, Idaho